

GRINDEX Information

1996-10-01

TECHNICAL BULLETIN

TB 16

From: Tore Hovland, Technical Service Manager

Subject: **CHANGE OF CONTACTOR TYPE**

Technical category: Motor protector

Pumps concerned. All 3-phase models

As from autumn 1996 Grindex has changed supplier of contactors from Sprecher+Schuh to Telemecanique. At the same time we have also introduced a new serial number system. All pumps now receive a serial number belonging to the same number series. Pumps manufactured with Telemecanique contactors have a serial number as from:

100400

The new spare parts lists for pumps with Telemecanique contactors have the following revision number:

Pump	Rev No.
Minex	10
Minette	9
Minor	10
Major	11
Master	2
Midi	6
Matador	6
Salvador	8
Senior	7
Sandy	7
Super	7
Semi	5
Senator	5



In connection with the above mentioned change, we changed over from normally open to normally closed auxiliary contacts in our contactors. This means that star/delta starters do not need any auxiliary contact blocks.

The new time-relay has an incorporated time-lag that is used when changing over from star to delta. The time-lag was formerly placed in one of the auxiliary contact blocks.

New articles

Sprecher+Schuh and Telemecanique contactors are of different sizes. In order to make the change possible, the following articles have been introduced:

Art No.	Denomination
----------------	---------------------

5002110	Screw for cover 5006602
---------	-------------------------

5006602	Cover, Midi, Matador, Semi and Senator
---------	--

5007501	Mounting plate, Midi, Matador, Semi and Senator
---------	---

5035600	Mounting plate for vertically mounted contactor, Major etc
---------	--

5035602	Mounting plate for 40A-contactor, Master
---------	--

Interchangeability

Sprecher+Schuh contactors will still exist as spare parts but there is the possibility of replacing them by Telemecanique. Because of differences between the two contactor types, complete interchangeability is not always possible. Besides contactors, some other parts have to be changed as follows:

Minex

All versions:	Complete interchangeability
---------------	-----------------------------

Minette

All versions:	Complete interchangeability
---------------	-----------------------------

Minor

All versions:	Complete interchangeability
---------------	-----------------------------

Major

220 V/50 Hz:	Mounting plate 5035600 for vertically mounted contactor
230 V/50 Hz	must be used.

Other versions:	Complete interchangeability
-----------------	-----------------------------

Master, DOL

346 V/50 Hz:

380-415V/50 Hz

230 V/60 Hz

460 V/60 Hz

Mounting plate 5035600 for vertically mounted contactor must be used.

Other versions: Complete interchangeability

Master, Y/ D

All versions:

Complete interchangeability

Midi, DOL

220 V/50 Hz:

230 V/60 Hz

Contactor, overload relay and mounting plate must be changed (new mounting plate, Art. No. 5007501).

Other versions: Contactor and overload relay must be changed.

Midi, Y/ D

220 V/50 Hz:

230 V/60 Hz

All electrical components, excluding SMART, as well as the cover must be changed (new cover, Art. No. 5006602).

All versions: All electrical components excluding SMART must be changed.

Matador, DOL

All versions:

Contactor, overload relay and mounting plate must be changed (new mounting plate, Art. No. 5007501)

Matador, Y/D

All versions:

Contactor, overload relay and mounting plate must be changed (new mounting plate, Art. No. 5006602).

Salvador

All versions: Complete interchangeability

Senior

230 V/60 Hz: Mounting plate 5035600 for vertically mounted contactor has to be used.

Other versions: Complete interchangeability

Sandy

220 V/50 Hz: Mounting plate 5035600 for vertically mounted contactor has to be used.
230 V/60 Hz

Other versions: Complete interchangeability

Super

220 V/50 Hz: Mounting plate 5035600 for vertically mounted contactor has to be used.

Other versions: Complete interchangeability

Semi, Dol

220 V/50 Hz: Contactor, overload relay and mounting plate must be changed (new mounting plate, Art. No. 5007501)
230 V/60 Hz

Other versions: Contactor and overload relay must be changed.

Semi, Y/D

220 V/50 Hz: All electrical components, excluding SMART, as well as the cover must be changed (new cover, Art. No. 5006602)
230 V/60 Hz

Other versions: All electrical components excluding SMART must be changed.

Senator, DOL

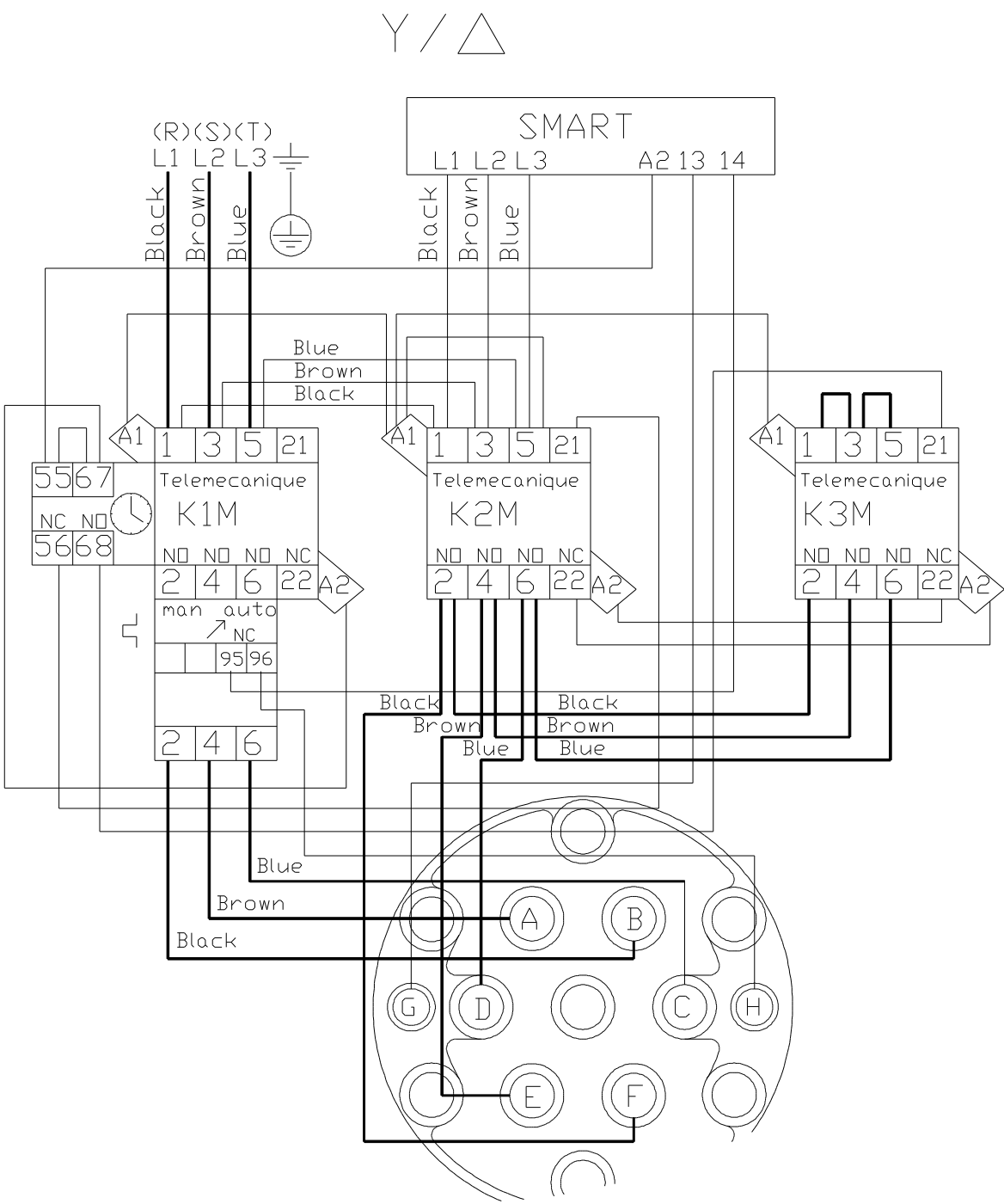
All versions: Contactor, overload relay and mounting plate must be changed (new mounting plate, Art. No. 5007501)

Senator, Y/D

versions: Contactor, overload relay and mounting plate must be All changed (new mounting plate, Art. No. 5007501)

Wiring Diagram

The alteration of the star/delta wiring diagram is due to the elimination of the auxiliary contact blocks and to the fact that Telematique has another marking on the time-lag. The DOL diagram is unchanged.



Setting of overload protection

Pump	U (V)	f (Hz)	Setting	Pump	U (V)	f (Hz)	Setting
Midi Dol	200	50	45	Semi Dol	200	50	50
Midi Dol	220	50	41	Semi Dol	220	50	45
Midi Dol	346	50	26	Semi Dol	346	50	29
Midi Dol	380-415	50	24	Semi Dol	380-415	50	26
Midi Dol	500-550	50	18	Semi Dol	500-550	50	20
Midi Dol	380	60	29	Semi Dol	380	60	30
Midi Dol	230	60	48	Semi Dol	230	60	48
Midi Dol	460	60	24	Semi Dol	460	60	24
Midi Dol	575	60	19	Semi Dol	575	60	20
Midi Y/Δ	200	50	26	Semi Y/Δ	200	50	29
Midi Y/Δ	220	50	23	Semi Y/Δ	220	50	26
Midi Y/Δ	346	50	15	Semi Y/Δ	346	50	17
Midi Y/Δ	380-415	50	14	Semi Y/Δ	380	50	15
Midi Y/Δ	500-550	50	10	Semi Y/Δ	500	50	11
Midi Y/Δ	380	60	17	Semi Y/Δ	380	60	17
Midi Y/Δ	230	60	28	Semi Y/Δ	230	60	28
Midi Y/Δ	460	60	14	Semi Y/Δ	460	60	14
Midi Y/Δ	575	60	11	Semi Y/Δ	575	60	11
Matador Dol	200	50	85	Senator Dol	200	50	91
Matador Dol	220	50	77	Senator Dol	220	50	83
Matador Dol	346	50	48	Senator Dol	346	50	53
Matador Dol	380-415	50	44	Senator Dol	380-415	50	47
Matador Dol	500-550	50	34	Senator Dol	500-550	50	36
Matador Dol	380	60	52	Senator Dol	380	60	51
Matador Dol	230	60	86	Senator Dol	230	60	83
Matador Dol	460	60	43	Senator Dol	460	60	42
Matador Dol	575	60	34	Senator Dol	575	60	33
Matador Y/Δ	346	50	28	Senator Y/Δ	346	50	30
Matador Y/Δ	380-415	50	25	Senator Y/Δ	380-415	50	27
Matador Y/Δ	500-550	50	20	Senator Y/Δ	500-550	50	21
Matador Y/Δ	380	60	30	Senator Y/Δ	380	60	29
Matador Y/Δ	460	60	25	Senator Y/Δ	460	60	24
Matador Y/Δ	575	60	20	Senator Y/Δ	575	60	19