

# GRINDEX Information

1993-04-02

TECHNICAL BULLETIN

TB 03

---

From: Sören Eriksson, Technical Service Manager

Subject: **LEVEL REGULATOR SET 50 184 01**

Technical category: Accessories

Pumps concerned: New Line Midi, Matador, Semi and Senator

To sets are required.

The level regulator set can be installed at the factory or retrofitted on the above pump models. The electrical connection at the site should be made in strict accordance with the local regulations. Along with the set there is an installation instruction with a drill template and parts list.

The template fits inside the cover and shows where to drill the holes for the two cable entries. See to it that there are no sharp edges left after drilling the two holes. Install cable entry and cable as illustrated in the figure. Tighten jam nut ( 9005 ) securely. Insert cable sleeve in correct position. Tighten gland nut ( 9002 ) securely ( do not overtighten ). Never pull the cables after assembly.

Proceed according to the installation instruction.

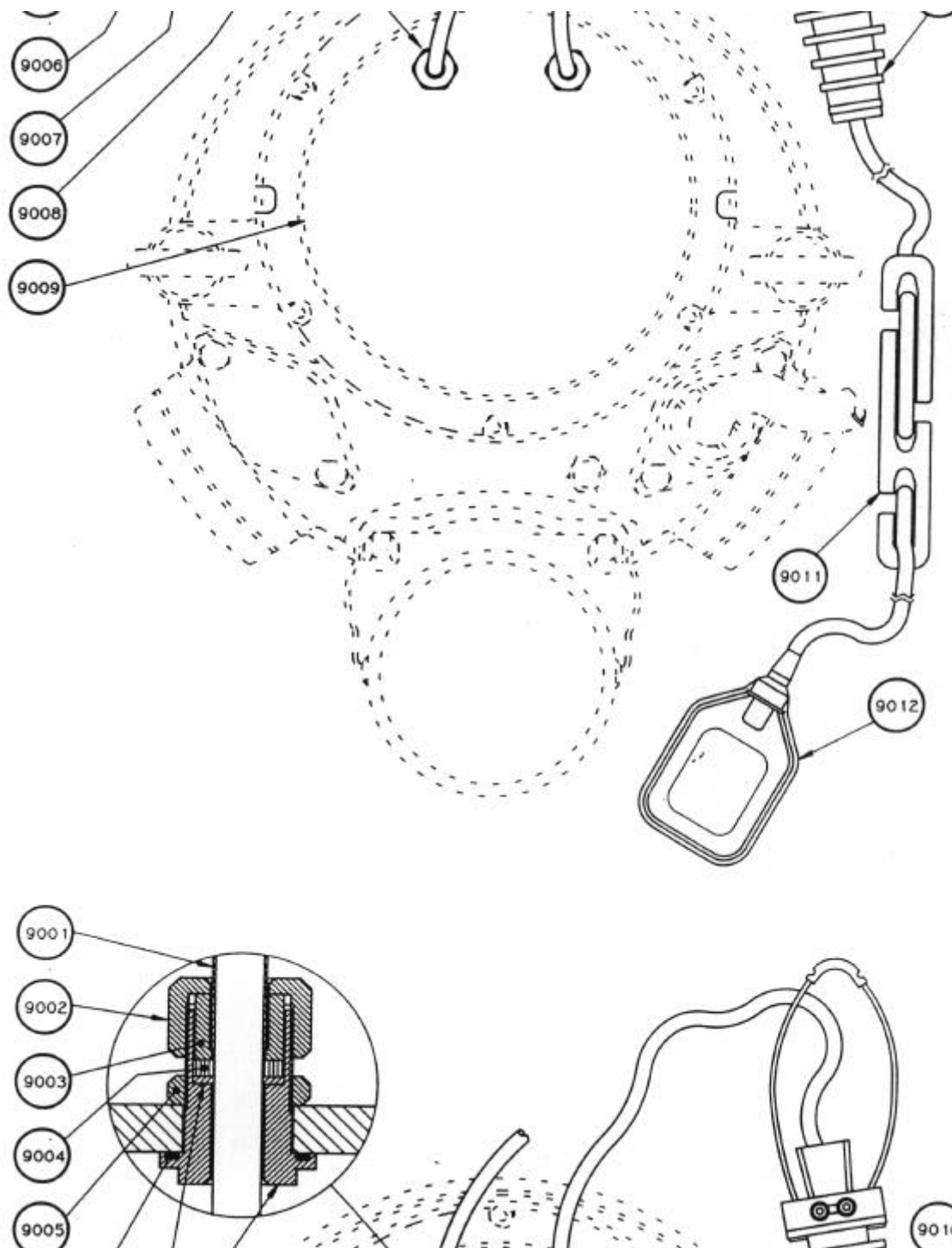
Fit the two cable holders at suitable head and distance from each other. Adjust the length of float switch cables and fit weights on cables to operate the pump at correct start and stop level.

The pump can run continuously or intermittently with a maximum of 15 evenly spaced starts per hour.

Maximum operation voltage is 400V AC 50/60Hz.

Encl: Installation instruction 90 022 00





**No: 90 022 00**  
Revision 0 1993. 04

**MIDI - MATADOR**  
**SEMI - SENATOR**

**5018401**  
**5018401**

Max. Spänning 400V AC 50/60Hz  
 Max. Voltage  
 Max. Spannung  
 Max. Tension

## 50 184 01

Nivåregulatorsats  
 bestående av: Level regulator set  
 comprising:

Pos. nr. Item No. Pos.-Nr. No. de répérage	Detailnr. Part No. Bestell-Nr. No. de pièce	Benämning	Denomination
9001	50 132 00	Gummihylsa	Rubber sleeve
9002	50 159 00	Överfallsmutter	Nut
9003	50 162 00	Hylsa	Sleeve
9004	50 015 04	Gummikuts	Rubber seal
9005	50 161 00	Kontramutter	Jam nut
9006	50 037 05	O-ring	O-ring
9007	50 016 04	Bricka	Washer
9008	50 160 01	Tätningsskruv	Screw
9009	50 215 00	Vipp-spänn klämma	Clamp
9010	50 222 00	Mall vippa	Jig regulator
9011	50 204 00	Tyngd	Weight
9012	131621	Nivåvippa	Regulator

Niveaureglersatz  
 bestehend aus: Jeu régulateur niveau  
 comprenant:

Bezeichnung	Désignation	Antal Quantity Anzahl Nombre
Gummihülse	Douille caout.	2
Ueberfall	Ecrou	2
Hülse	Douille	2
Gummidichtung	Manchon	2
Gegenmutter	Contre-écrou	2
O-Ring	Anneau torique	2
Scheibe	Rondelle	2
Schraube	Vis	2
Klamme	Pince	2
Mall Regler	Calibre régul.	1
Gewicht	Lourdeur	2
Regler	Régulateur	2

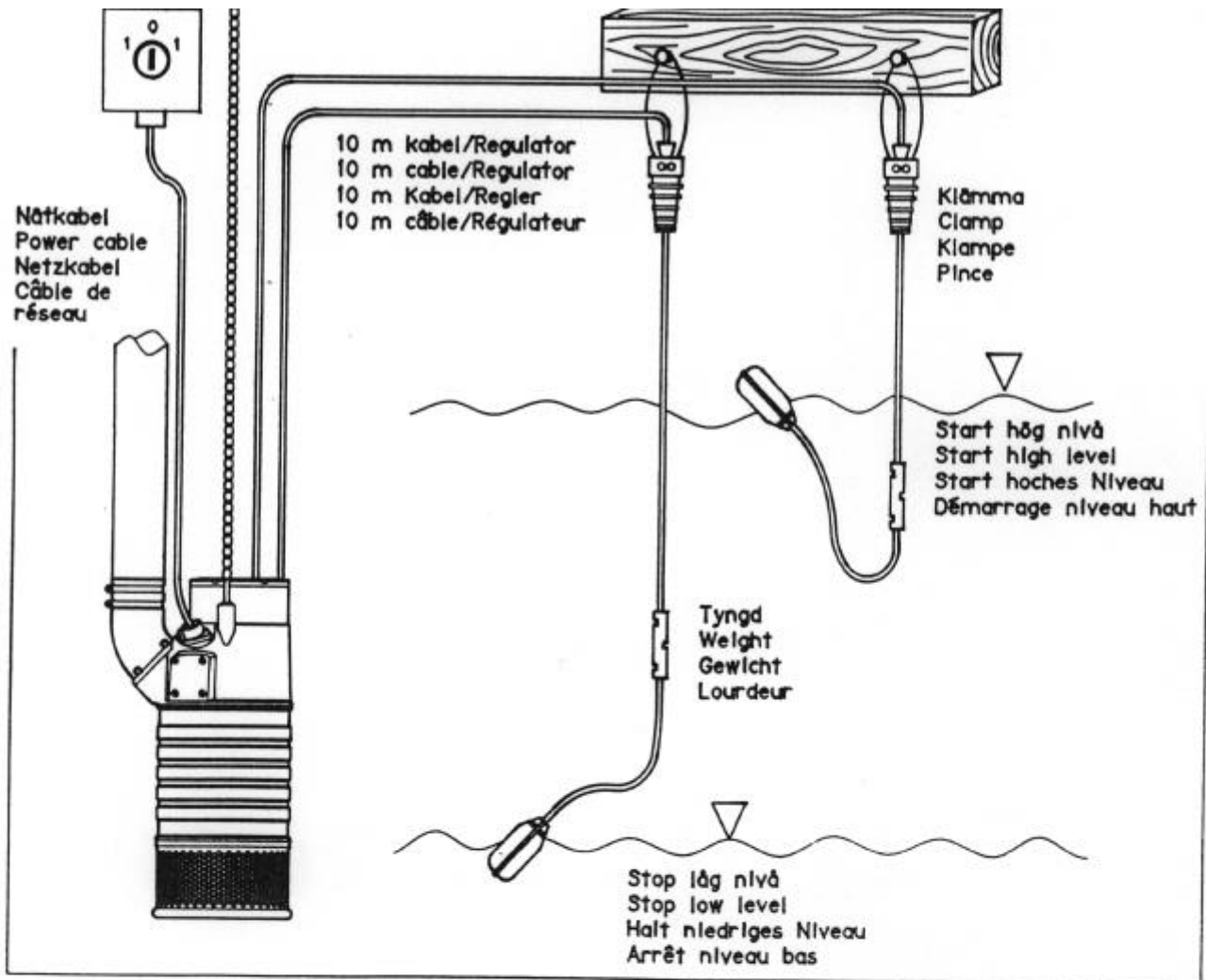
# GRINDEX

Installation av nivåregulatorsats

Installation von Niveaureglersatz

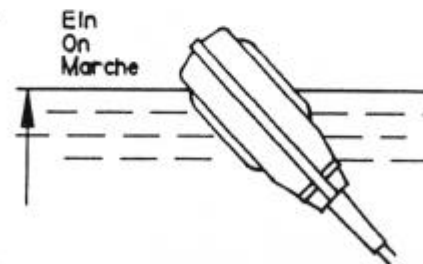
Installation of level regulator set

Installation du jeu de régulateurs de niveau

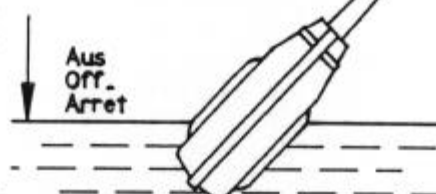


Nätanslutning  
Power supply  
Netzanschluss  
Branchement sur le réseau

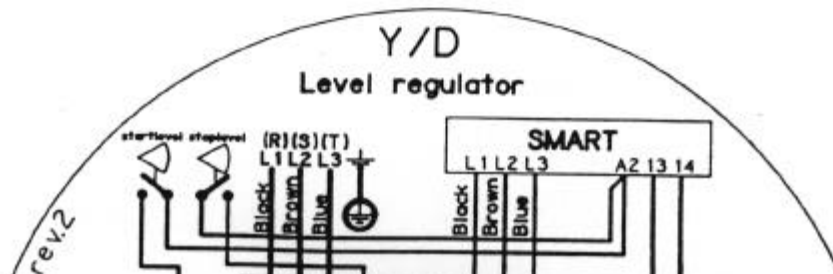
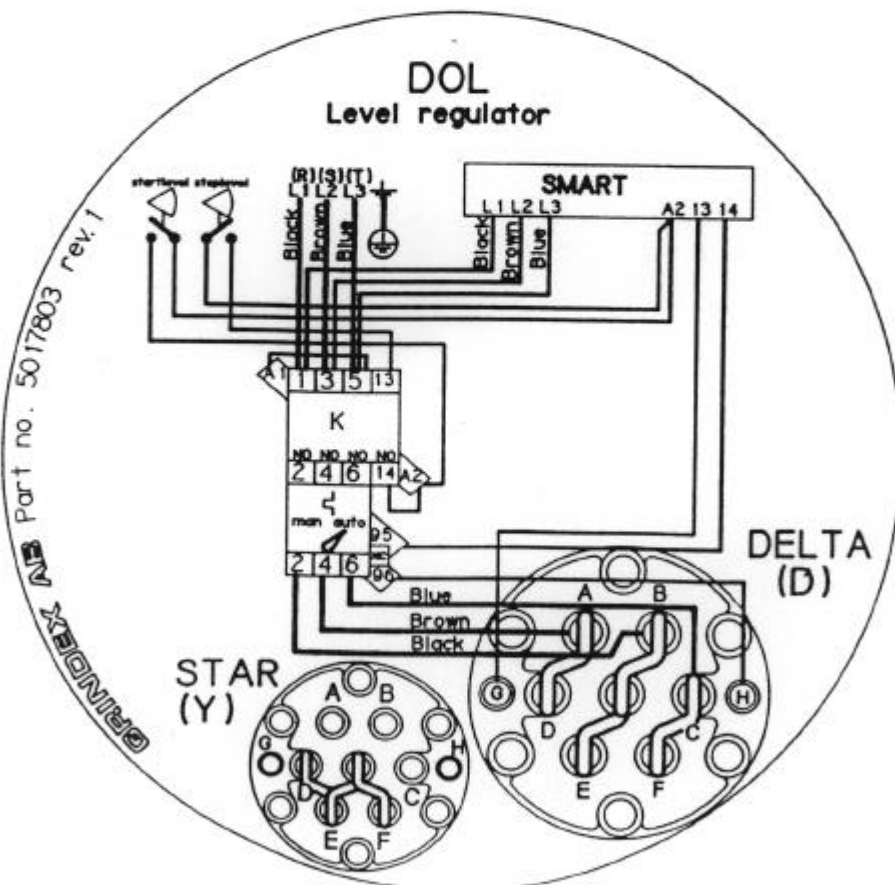
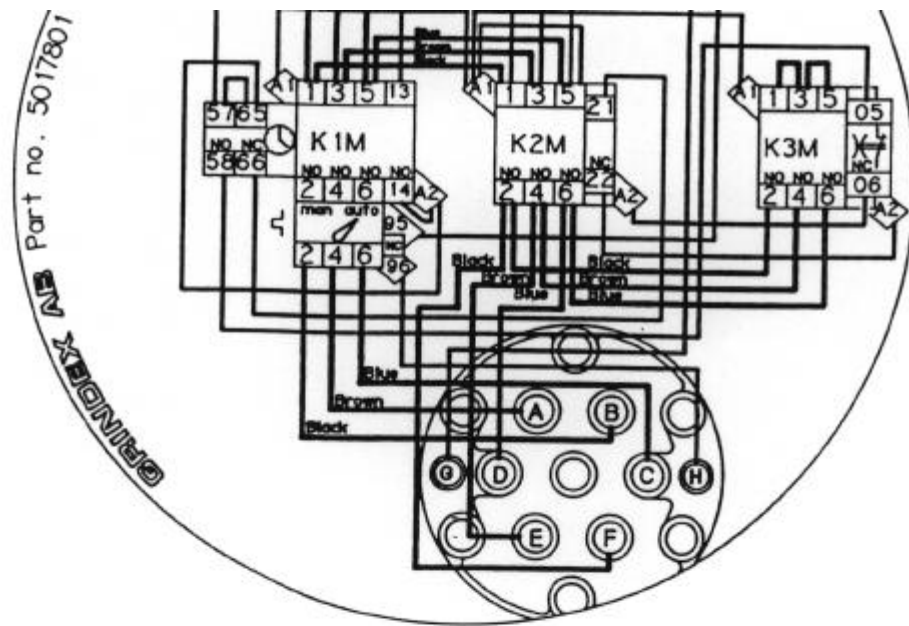
Lyftkedja  
Lifting chain  
Hebekette  
Chaîne de levage



Operationspositioner för nivåregulator.  
Operation positions of level regulator.  
Operationspositionen für Niveauregler.  
Position d'opération du jeu de régulateur de niveau.



# GRINDEX



# GRINDEX

