

# Parts List

8107.030 Maxi





---

# Table of Contents

<b>1 Introduction.....</b>	<b>2</b>
1.1 Specially approved products.....	2
<b>2 Product Description.....</b>	<b>3</b>
2.1 Products included.....	3
2.2 The data plate.....	3
<b>3 Exploded View.....</b>	<b>4</b>
3.1 8107.030.....	4
<b>4 Spare Parts.....</b>	<b>5</b>
4.1 8107.030.....	5

# 1 Introduction

## **Purpose of this manual**

The purpose of this manual is to provide necessary information on spare parts and accessories order.

## **Disclaimer**

Always use genuine Grindex parts. The use of other spare parts or accessories can invalidate any claims for warranty or compensation. Grindex does not take any responsibility for damages that are caused by the use of non-original parts. For more information, contact your local sales and service representative.

## **Data for ordering spare parts**

The following information is needed for spare part orders:

- Serial number of the product
- Part number
- Quantity of bulk material, see \* in tables

## **1.1 Specially approved products**

### **Qualification of personnel**

Only Grindex or Grindex-authorized service personnel may undertake repair work on Ex-approved products.

### **Dimensional accuracy inspection**

Spare parts marked with (Ex) after the part number are subject to dimensional accuracy inspection when used in specially approved products.

## 2 Product Description

### 2.1 Products included

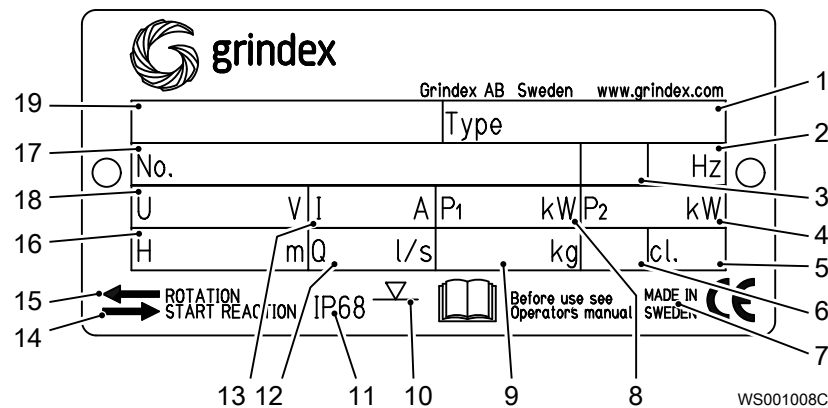
Pump model	Standard	EX	MSHA	Drainage	Sludge
Maxi 8107.030	X			X	

### 2.2 The data plate

#### Introduction

The data plate is a metal label located on the main body of the pump. The data plate lists key product specifications.

#### The data plate



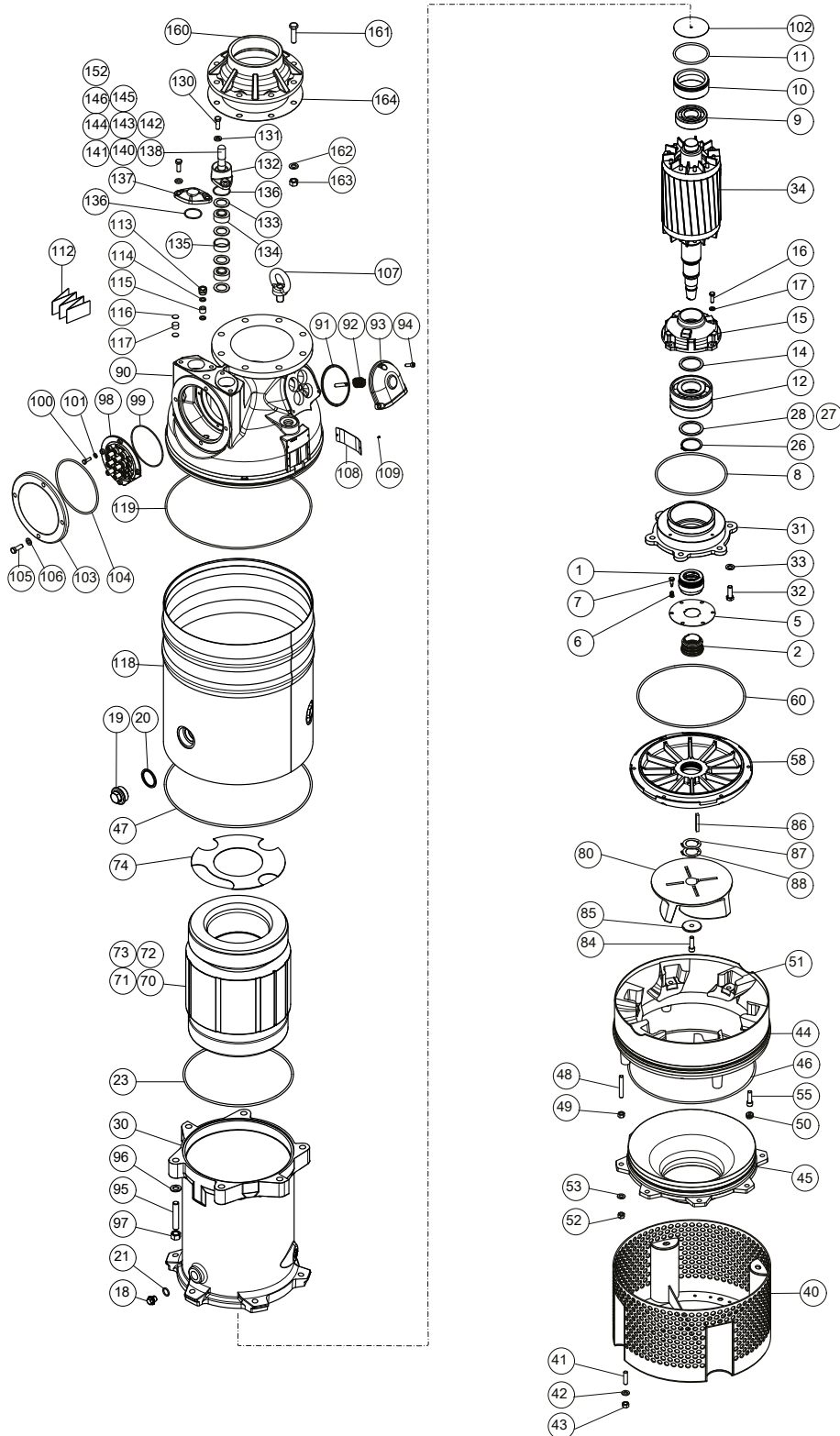
1. Pump type number
2. Frequency
3. Phases, type of current
4. Rated shaft power
5. Thermal class
6. Locked rotor code-letter
7. Country of origin
8. Maximum power consumption
9. Product weight
10. Maximum submersion depth
11. Degree of protection
12. Maximum capacity
13. Rated current
14. Direction of the start reaction
15. Direction of the impeller rotation
16. Maximum head
17. Serial number

The first two characters describe the production year.

18. Rated voltage
19. Pump model

# 3 Exploded View

## 3.1 8107.030



20249B\_8107.030\_L\_expl\_view

# 4 Spare Parts

## 4.1 8107.030

Pos. No	Part. No	Denomination	Qty/Version
			030
1	132 382	Mechanical seal	1
2	50 365 00	Mechanical seal	1
3	50 790 00	Lock washer	1
4	50 020 08	Hexagon head screw M6X8-A2-70	1
5	50 367 00	Washer	1
6	50 368 00	Compression spring	6
7	50 371 00	Screw with barrel	6
8	132 380	O-ring 194.3X5.7 NBR	1
9	132 358	Ball bearing 40X90X23	1
10	132 357	Bearing guide	1
11	132 355	O-ring 89.1X5.7 NBR	1
12	132 406	Ball bearing 55X120X29	2
13	410 495	Grease	*
14	132 373	Supporting washer 55X68X3	1
15	132 376	Bearing cover	1
16	130 642	Hexagon head screw M8X25-A2-70	4
17	132 289	Plain washer 8-A2-170	4
18	133 063	Inspection screw BRASS	3
19	410 486	Plug	3
20	50 584 00	Seal washer 57.15X45.34X3.25	3
21	133 064	O-ring 19.2X3 NBR	3
22	410 053	Oil ISO VG 32	5
23	132 356	O-ring 299.3X5.7 NBR	1
26	132 381	Retaining ring SGA 55	1
27	132 375	Washer 0.2 MM	2
28	132 373	Supporting washer 55X68X3	1
30	50 359 00	Stator housing	1
31	50 791 00	Bearing housing	1
32	410 197	Hexagon head screw M12X35-A2-70	6
33	132 274	Plain washer 12-A2-170	6

Pos. No	Part. No	Denomination	Qty/Version	
			030	
34	50 358 00	Shaft unit	1	
40	51 874 00	Strainer compl.	1	
41	132 279	Stud M12X30-A2-70	4	
42	132 274	Plain washer 12-A2-170	4	
43	132 280	Hexagon nut M12-A2-70	4	
44	50 361 00	Diffuser ring	1	
45	50 363 00	Suction cover	1	
46	50 037 30	O-ring 379.3X5.7 NBR	1	
47	410 564	O-ring 479.3X5.7 NBR	1	
48	132 442	Stud M12X80-A2-70	8	
49	132 280	Hexagon nut M12-A2-70	8	
51	50 362 00	Guide vane	6	
52	132 280	Hexagon nut M12-A2-70	8	
53	132 274	Plain washer 12-A2-170	8	
55	50 023 04	Hex.socket hd screw M12X40-A2-70	6	
56	50 370 00	Plug	6	
58	50 360 00	Oil housing coated	1	
59	132 395	Hex.socket hd screw M8X20-A2-70	6	
60	410 563	O-ring 289.3X5.7 NBR	1	
70	50 357 28	Stator 30-21-4a	6-leads 60 Hz 4-poles 200V-208V D	1
70	50 357 34	Stator 30-21-4a	6-leads 50 Hz 4-poles 220V-230V D 380V-400V Y	1
70	50 357 48	Stator 30-21-4a	12-leads 60 Hz 4-poles 440V-460V DSER 380V-400V Y// 12-leads 60 Hz 4-poles 220V-230V D//	1
70	50 357 35	Stator 30-21-4a	6-leads 60 Hz 4-poles 380V-400V D	1
70	50 357 07	Stator 30-21-4a	6-leads 50 Hz 4-poles 380V-400V D 660V-690V Y 6-leads 60 Hz 4-poles 440V-480V D	1
70	50 357 44	Stator 30-21-4a	6-leads 50 Hz 4-poles 415V-440V D	1
70	50 357 09	Stator 30-21-4a	6-leads 50 Hz 4-poles 500V D 6-leads 60 Hz 4-poles 575V-600V D 6-leads 50 Hz 4-poles 525V-550V D	1

Pos. No	Part. No	Denomination	Qty/Version
			030
71	50 221 00	End sleeve 0.75 MM2; L=6 MM	2
71	50 221 01	End sleeve 1.5 MM2; L=7 MM	2
72	50 221 06	End sleeve 16 MM2; L=12 MM	6
72	50 221 05	End sleeve 10 MM2; L=12 MM	6
72	50 221 04	End sleeve 6 MM2; L=10 MM	6
73	132 354	Insulating hose D=20 MM	*
74	132 294	Protective disc	1
75	50 369 00	Wear protection	1
80	50 364 00	Impeller	Semi-open 50Hz Hard-Iron TM code: 409
80	50 364 01	Impeller	Semi-open 50Hz Hard-Iron TM code: 411 Semi-open 60Hz Hard-Iron TM code: 411
84	50 023 05	Hex.socket hd screw MC6S 12X40-2343	1
85	50 366 00	Supporting washer	1
86	50 205 09	Parallel key	1
87	50 174 01	Washer 0.3 MM	6
88	50 174 02	Washer 0.5 MM	5
90	51 893 00	Bearing holder	1
91	130 745	Valve	1
92	130 752	Spring	1
93	130 728	Cover	1
94	50 021 00	Hex.socket hd screw M8X25-A2-70	3
95	411 006	Stud M16X70-A2-70	6
96	132 258	Plain washer 16-A2-A-170	6
97	132 256	Hexagon nut M16-A2-70	6
98	133 119	Con.term.board unit	1
99	410 833	O-ring 139.5X3 NBR	1
100	130 642	Hexagon head screw M8X25-A2-70	4
101	132 289	Plain washer 8-A2-170	4
103	132 278	Cover	1
104	50 037 45	O-ring 184.3X5.7 NBR	1
105	410 197	Hexagon head screw M12X35-A2-70	4

Pos. No	Part. No	Denomination	Qty/Version
			030
106	132 274	Plain washer 12-A2-170	4
107	132 277	Lifting eye bolt M24	2
108	50 888 00	Plate-blank	1
109	410 000	Drive screw 4X5-A2/A4	2
110	51 919 00	Instruction plate	1
112	51 675 03	Connection plate	1
113	132 343	Gland screw	1
114	132 344	Plain washer 12.5X20.5X2-A2-70	2
115	132 345	Seal sleeve (10)-12 MM	1
116	132 455	Plate	2
117	132 454	Plug	1
118	51 878 00	Outer casing	1
119	410 564	O-ring 479.3X5.7 NBR	1
130	410 197	Hexagon head screw M12X35-A2-70	4
131	132 424	Plain washer 12-A2-170	4
132	51 033 04	Entrance flange	2
132	51 033 04	Entrance flange	1
133	132 336	Plain washer (32)-34 MM	8
133	132 336	Plain washer (32)-34 MM	4
133	132 312	Plain washer (33)-35 MM	4
133	132 312	Plain washer (33)-35 MM	8
133	132 341	Plain washer (37)-39 MM	4
134	410 115	Seal sleeve (23)-26 MM	4
134	410 115	Seal sleeve (23)-26 MM	2
134	410 116	Seal sleeve (26)-29 MM	2
134	410 116	Seal sleeve (26)-29 MM	4
134	410 118	Seal sleeve (32)-35 MM	2
134	410 118	Seal sleeve (32)-35 MM	4
134	410 612	Seal sleeve (36)-38 MM	2
134	410 117	Seal sleeve (29)-32 MM	2
135	51 025 02	Sleeve	2
135	51 025 02	Sleeve	1
136	410 086	O-ring 49.5X3 NBR	2
137	51 892 00	Cover	1
138	410 126	Motor cable subcab 4G6+2X1,5	24 - 26mm Max 750V *
138	410 858	Motor cable subcab 7G6+S(2X0,5)	24 - 26mm Max 1000V *

Pos. No	Part. No	Denomination	Qty/Version	030
138	410 852	Motor cable subcab 4G10+S(2X0,5)	24 - 26mm Max 1000V	*
138	410 853	Motor cable subcab 4G16+S(2X0,5)	26 - 28mm Max 1000V	*
138	410 854	Motor cable subcab 4G25+S(2X0,5)	32 - 34mm Max 1000V	*
138	410 855	Motor cable subcab 4G35+S(2X0,5)	35 - 37mm Max 1000V	*
138	410 136	Motor cable 4AWG/3-2-1- GC	32,80 - 34,80mm Max 600V	*
138	410 862	Motor cable subcab S3X10+3X10/3+S(4X0,5)	24 - 26mm Max 1000V	*
138	410 864	Motor cable subcab S3X25+3X16/3+S(4X0,5)	29 - 31mm Max 1000V	*
139	410 878	Cap 24X45 MM PVC		2
139	410 878	Cap 24X45 MM PVC		1
139	410 880	Cap 26X45 MM PVC		1
139	410 880	Cap 26X45 MM PVC		2
139	411 008	Cap 32X45 MM PVC		1
139	411 008	Cap 32X45 MM PVC		2
139	411 015	Cap 35X45 MM PVC		1
139	411 014	Cap 33X45 MM PVC		1
139	411 017	Cap 30X45 MM PVC		1
140	411 009	Hexagon head screw		2
140	411 009	Hexagon head screw		1
141	50 221 04	End sleeve 6 MM2; L=10 MM		6
141	50 221 05	End sleeve 10 MM2; L=12 MM		3
141	50 221 05	End sleeve 10 MM2; L=12 MM		6
141	50 221 06	End sleeve 16 MM2; L=12 MM		3
141	50 221 06	End sleeve 16 MM2; L=12 MM		6
141	50 221 07	End sleeve 25 MM2; L=15 MM		3
141	50 221 07	End sleeve 25 MM2; L=15 MM		6
141	50 221 08	End sleeve 35 MM2; L=18 MM		3
142	50 221 01	End sleeve 1.5 MM2; L=7 MM		2
142	50 221 00	End sleeve 0.75 MM2; L=6 MM		2

Pos. No	Part. No	Denomination	Qty/Version
			030
142	50 221 04	End sleeve 6 MM2; L=10 MM	2
143	410 873	Cable lug UL/CSA 0.50-1.65 MM2 M6	1
143	410 177	Cable lug UL/CSA 2.62-6.64 MM2 M6	1
144	131 797	Cable lug 4-6 MM2 M8	2
144	131 797	Cable lug 4-6 MM2 M8	1
144	131 137	Cable lug 10 MM2 M8	1
144	131 137	Cable lug 10 MM2 M8	2
144	131 799	Cable lug 16 MM2 M8	1
144	131 799	Cable lug 16 MM2 M8	2
144	132 609	Cable lug 25 MM2 M8	1
144	132 609	Cable lug 25 MM2 M8	2
144	411 007	Cable lug 35 MM2 M102	1
145	410 917	Shrink hose ID=12 MM	*
146	410 918	Shrink hose ID=3.2 MM	*
147	410 122	Shrink hose ID=9.5 MM	*
148	410 881	Closed-end splice 0.33-0.82(AWG 22-18) L=18	2
149	51 438 00	Plate SENSOR CONNECTED T1-T2	2
151	410 875	Cap 6X16 MM PVC	1
151	410 876	Cap 7X16 MM PVC	1
152	50 020 20	Hexagon head screw M6X12-A4-70	1
160	132 437	Discharge connection 8" HOSE	1
160	132 438	Discharge connection ISO G8	1
160	132 439	Discharge connection NPT 8-8	1
161	132 255	Hexagon head screw M16X60-A2-70	8
162	132 258	Plain washer 16-A2-A-170	8
163	132 256	Hexagon nut M16-A2-70	8
164	132 257	Gasket	1
170	51 899 00	Stand	1
800	51 898 00	O-ring kit	1
801	51 853 00	Zinc anode kit	1
900	51 922 03	Basic repair kit	1









Grindex  
Gesällvägen 33  
174 07 Sundbyberg  
Sweden  
Tel: +46-8-606 66 00  
Fax: +46-8-745 53 28  
[www.grindex.com](http://www.grindex.com)

Visit our Web site for the latest version of this document  
and more information

The original instruction is in English. All non-English  
instructions are translations of the original instruction.

© 2014 Grindex