

## Parts List

8118.280 Salvador Inox





# Table of Contents

<b>1 Introduction.....</b>	<b>2</b>
1.1 Specially approved products.....	2
<b>2 Product Description.....</b>	<b>3</b>
2.1 Products included.....	3
2.2 The data plate.....	3
<b>3 Exploded View.....</b>	<b>4</b>
3.1 Exploded View.....	4
<b>4 Spare Parts.....</b>	<b>5</b>
4.1 List of parts.....	5

# 1 Introduction

## **Purpose of this manual**

The purpose of this manual is to provide necessary information on spare parts and accessories order.

## **Disclaimer**

Always use genuine Grindex parts. The use of other spare parts or accessories can invalidate any claims for warranty or compensation. Grindex does not take any responsibility for damages that are caused by the use of non-original parts. For more information, contact your local sales and service representative.

## **Data for ordering spare parts**

The following information is needed for spare part orders:

- Serial number of the product
- Part number
- Quantity of bulk material, see \* in tables

## 1.1 Specially approved products

### **Qualification of personnel**

Only Grindex or Grindex-authorized service personnel may undertake repair work on Ex-approved products.

### **Dimensional accuracy inspection**

Spare parts marked with (Ex) after the part number are subject to dimensional accuracy inspection when used in specially approved products.

## 2 Product Description

### 2.1 Products included

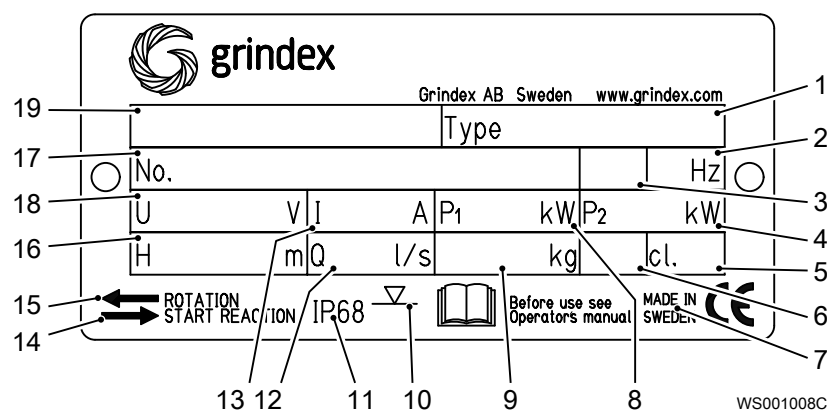
Pump model	Standard	EX	MSHA	Drainage	Sludge
Salvador INOX 8118.280	X				X

### 2.2 The data plate

#### Introduction

The data plate is a metal label located on the main body of the pump. The data plate lists key product specifications.

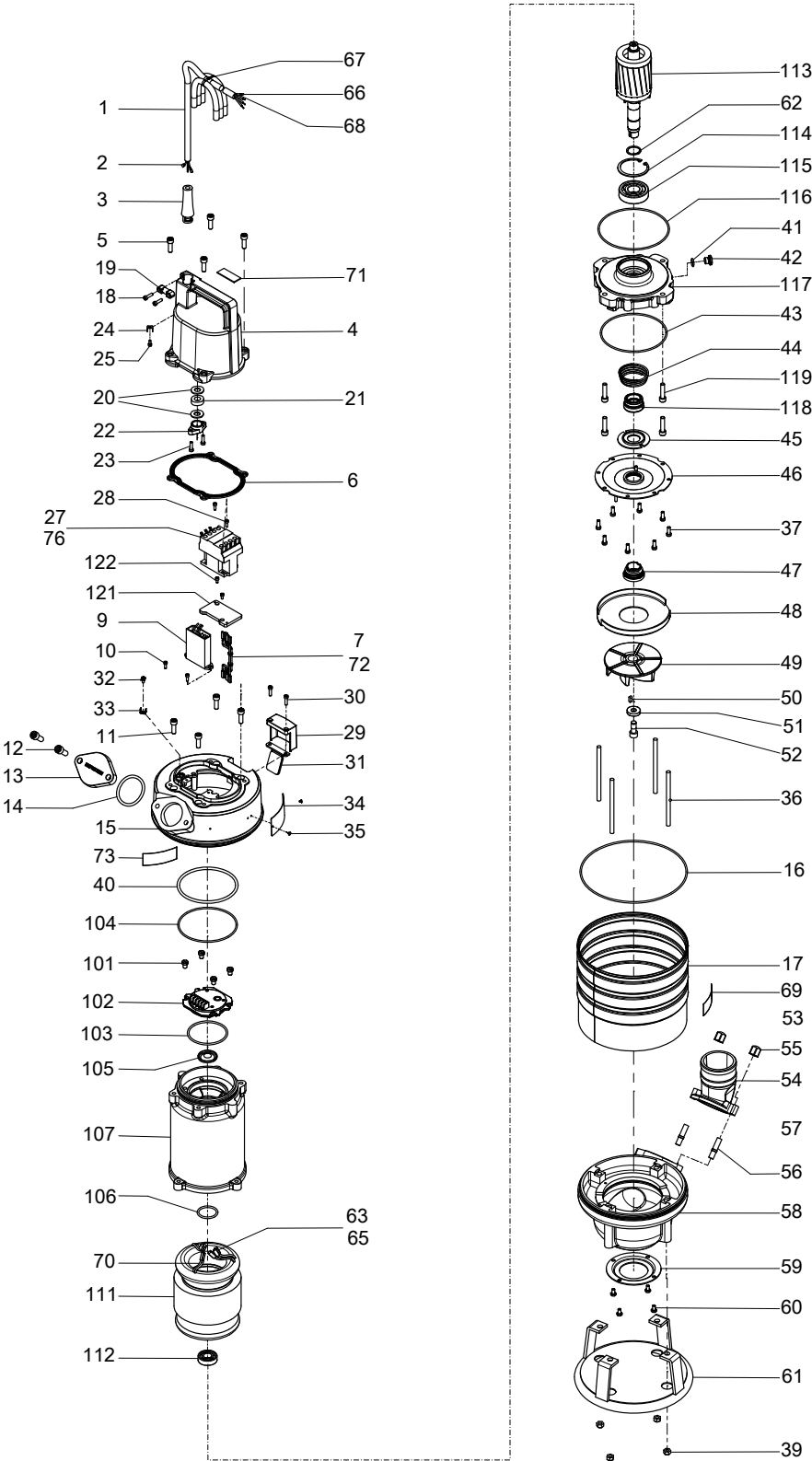
#### The data plate



1. Pump type number
  2. Frequency
  3. Phases, type of current
  4. Rated shaft power
  5. Thermal class
  6. Locked rotor code-letter
  7. Country of origin
  8. Maximum power consumption
  9. Product weight
  10. Maximum submersion depth
  11. Degree of protection
  12. Maximum capacity
  13. Rated current
  14. Direction of the start reaction
  15. Direction of the impeller rotation
  16. Maximum head
  17. Serial number
- The first two characters describe the production year.
18. Rated voltage
  19. Pump model

# 3 Exploded View

## 3.1 Exploded View



20186A\_8118\_280\_exp\_view

## 4 Spare Parts

### 4.1 List of parts

Pos. No	Part. No	Denomination	Qty/Version
			280
1	131 040	Motor cable subcab 4G1.5 Power cable x 1 10,50 - 11,50mm L= 20m Starter (Phase shifter) 3-phase 220V - 575 V Current range: 0 - 16 A	*
1	131 039	Motor cable subcab 4G2.5 Power cable x 1 12,50 - 13,50mm L= 20m	*
1	410 065	Motor cable subcab 14 AWG/4 Power cable x 1 14,20 - 15,20mm L= 16m Starter (Phase shifter) 3-phase 220V - 575 V Current range: 0 - 16 A	*
2	50 040 04	Flat pin sleeve 1.0-2.5 MM2	4
2	50 040 05	Insulating sleeve 0.5-6 MM2	4
3	50 428 00	Bending protection SUBCAB 4G1,5 10,50 - 11,50mm	1
3	50 428 01	Bending protection SUBCAB 4G2,5 12,50 - 13,50mm	1
3	50 428 02	Bending protection SUBCAB 14AWG/4 14,20 - 15,20mm	1
4	50 709 00	Cover	1
5	50 021 30	Hex.socket hd screw M8X25-A4-80	4
6	50 038 01	Gasket	1
7	50 035 01	Cable unit	1
9	51 511 05	Motor protector SMART 50Hz 500V 50Hz 380V - 415V	1
9	51 511 06	Motor protector SMART 60Hz 440V - 460V 60Hz 575V - 600V	1
10	50 018 00	Hex.socket hd screw M4X12-A4-70	2
11	50 021 30	Hex.socket hd screw M8X25-A4-80	4
12	50 022 17	Hex.socket hd screw M10X25-A4-70	2
13	50 723 00	Inspection cover	1
14	50 037 08	O-ring 56.52X5.34 FPM	1
15	50 738 00	Main cover	1
16	50 037 14	O-ring 209.14X3.53 FPM	1

Pos. No	Part. No	Denomination	Qty/Version
			280
17	50 063 03	Outer casing	1
18	50 019 00	Hex.socket hd screw M5X18-A4-70	2
19	50 725 00	Cable clip	1
20	50 016 13	Plain washer 12.5X26.5- A4-70	No of cable entries: 1 (10)-12mm
20	50 016 14	Plain washer 14.5X26.5X2- A4-70	No of cable entries: 1 (12)-14mm
20	50 016 15	Plain washer 16.5X26.5X2- A4-70	No of cable entries: 1 (14)-16mm
21	50 015 00	Seal sleeve (10)-12 MM CR	No of cable entries: 1 (10)-12mm
21	50 015 01	Seal sleeve (12)-14 MM CR	No of cable entries: 1 (12)-14mm
21	50 015 02	Seal sleeve (14)-16 MM CR	No of cable entries: 1 (14)-16mm
22	50 726 00	Entrance flange	1
23	50 019 00	Hex.socket hd screw M5X18-A4-70	2
24	50 119 00	Flat pin sheet	1
25	133 525	Earthing screw	1
27	410 812	Contactor	50Hz 500V 50Hz 380V - 415V 60Hz 440V - 460V
27	410 891	Contactor	50Hz 550V 60Hz 575V - 600V
28	50 018 00	Hex.socket hd screw M4X12-A4-70	4
29	50 722 00	Air release valve	1
30	50 019 00	Hex.socket hd screw M5X18-A4-70	2
31	50 013 00	Air release valve	1
32	50 018 04	Hex.socket hd screw M4X6- A4-70	1
33	50 119 00	Flat pin sheet	1
34	50 888 00	Plate-blank	1
35	410 393	Drive screw 4X5-A4	2
36	50 021 35	Stud	4
37	50 020 18	Hex.socket hd screw M6X16-A4-70	8
38	50 037 67	O-ring 8X3 FPM	4
39	50 021 36	Lock nut M8-A4-70	4
40	50 037 07	O-ring 117.5X5.34 FPM	1



Pos. No	Part. No	Denomination	Qty/Version
			280
41	50 037 13	O-ring 12.37X2.62 FPM	1
42	50 705 00	Inspection screw	1
43	50 037 15	O-ring 134.5X3.0 FPM	1
44	50 559 01	Compression spring	1
45	50 740 00	Plate	1
46	50 581 01	Oil housing bottom	1
47	50 789 00	Mechanical seal RSIC/RSIC FPM	1
48	50 704 00	Guide plate	1
49	50 803 00	Impeller	1
		N 50Hz 3-phase Max ambient temp=40 DC Mtrl. Stainless steel, castings	
49	50 803 01	Impeller	1
		N 60Hz 3-phase Max ambient temp=40 DC Mtrl. Stainless steel, castings	
50	50 205 03	Parallel key 5X5X14-A4-220HB	1
51	50 022 27	Plain washer 10.5X28X6-A4-140HV	1
52	133 148	Hex.socket hd screw M10X25	1
53	50 037 64	O-ring 216X3 FPM	1
54	50 733 00	Discharge connection 3"	1
		DN 75 Hose	
54	50 733 01	Discharge connection ISO G3"	1
		DN 75 Thread : ISO G3A Outer	
54	50 733 02	Discharge connection 3-8 NPT	1
		DN 75 Thread : NPT 3-8 Outer	
55	50 022 25	Acorn nut	2
56	50 022 21	Stud	2
57	50 037 08	O-ring 56.52X5.34 FPM	1
58	50 716 00	Pump housing unit	1
59	132 739	Holding ring	1
60	410 396	Hexagon head screw M6X10-A4-70	4
61	50 706 00	Stand	1
62	130 818	Retaining ring 25-SPRING STEEL	1
63	50 040 05	Insulating sleeve 0.5-6 MM2	8
63	50 040 05	Insulating sleeve 0.5-6 MM2	5
64	50 040 05	Insulating sleeve 0.5-6 MM2	8

Pos. No	Part. No	Denomination	Qty/Version
			280
64	50 040 05	Insulating sleeve 0.5-6 MM2	11
65	50 040 04	Flat pin sleeve 1.0-2.5 MM2	8
65	50 040 09	Flat pin sleeve 0.75-1.5 MM2	5
66	50 221 02	End sleeve 2.5 MM2; L=7 MM	4
67	105 839	Cable tie 98X2.5 MM	1
68	-	Marking tape	1
69	410 053	Oil ISO VG 32	*
70	410 139	Insulating hose D=12 MM	*
71	50 898 00	Marking tape	1
72	50 509 00	Cable set	1
73	50 992 00	Sticker CUT HAZARD	1
74	51 735 00	Sticker	2
74	51 735 01	Sticker	2
75	51 622 00	Connection plate	1
76	410 034	Closed-end splice 3-6 (AWG 12-10)	3
101	50 021 31	Slotted head screw M8X10-A4	4
102	50 009 00	Connection term boar	1
103	50 037 27	O-ring 74.61X3.53 FPM	1
104	50 037 09	O-ring 119.5X3 FPM	1
105	140 365	Cover	1
106	50 037 11	O-ring 39.69X3.53 FPM	1
107	50 711 00	Stator housing	1
108	410 034	Closed-end splice 3-6 (AWG 12-10)	3
111	50 042 05	Stator 14-07-2b 3-phase 50Hz 2-poles 220V-230V D 380V-415V Y	1
111	50 042 09	Stator 14-07-2b 3-phase 50Hz 2-poles 500V-550V Y	1
111	50 042 14	Stator 14-07-2b 3-phase 60Hz 2-poles 440V-460V YSER 220V-230V Y//	1
111	50 042 16	Stator 14-07-2b 3-phase 60Hz 2-poles 575V-600V Y	1
112	140 362	Ball bearing 17X40X12	1
113	50 729 00	Shaft unit	1
114	140 064	Retaining ring SGH 62	1
115	140 363	Ball bearing 25X62X17	1

Pos. No	Part. No	Denomination	Qty/Version
			280
116	50 037 16	O-ring 144.5X3 FPM	1
117	50 713 00	Bearing holder	1
118	50 534 00	Mechanical seal	1
119	50 021 28	Hex.socket hd screw M8X35-A4-80	4
120	51 800 00	Sticker	1
121	-	Mounting plate	1
122	410 379	Hex.socket hd screw M4X6- A4-70	2
300	50 102 00	Phase shifter	1
400	50 100 00	Plug contact	1
800	50 085 14	O-ring kit FPM	1
801	-	Zinc anode kit	1
900	51 171 00	Basic repair kit	1



Grindex  
Gesällvägen 33  
174 07 Sundbyberg  
Sweden  
Tel: +46-8-606 66 00  
Fax: +46-8-745 53 28  
[www.grindex.com](http://www.grindex.com)

Visit our Web site for the latest version of this document  
and more information

The original instruction is in English. All non-English  
instructions are translations of the original instruction.

© 2017 Grindex