

Parts List

8120.280 Sandy Inox



Table of Contents

Introduction.....	2
Specially approved products.....	2
Product Description.....	3
Products included.....	3
The data plate.....	3
Exploded Views.....	4
8120.280.....	4
Spare Parts.....	5
8120.280.....	5

Introduction

Purpose of this manual

The purpose of this manual is to provide necessary information on spare parts and accessories order.

Disclaimer

Always use genuine Grindex parts. The use of other spare parts or accessories can invalidate any claims for warranty or compensation. Grindex does not take any responsibility for damages that are caused by the use of non-original parts. For more information, contact your local sales and service representative.

Data for ordering spare parts

The following information is needed for spare part orders:

- Serial number of the product
- Part number
- Quantity of bulk material, see * in tables

Specially approved products

Qualification of personnel

Only Grindex or Grindex-authorized service personnel may undertake repair work on Ex-approved products.

Dimensional accuracy inspection

Spare parts marked with (Ex) after the part number are subject to dimensional accuracy inspection.

Product Description

Products included

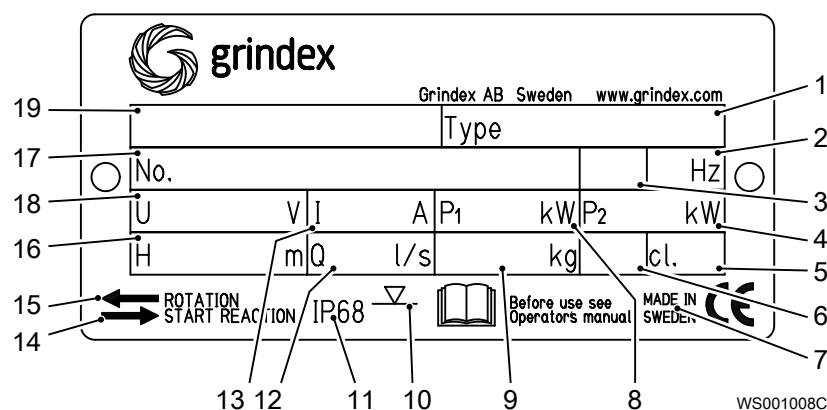
Pump model	Standard	EX	MSHA	Drainage	Sludge
Sandy INOX 8120.280	X				X

The data plate

Introduction

The data plate is a metal label located on the main body of the pump. The data plate lists key product specifications.

The data plate

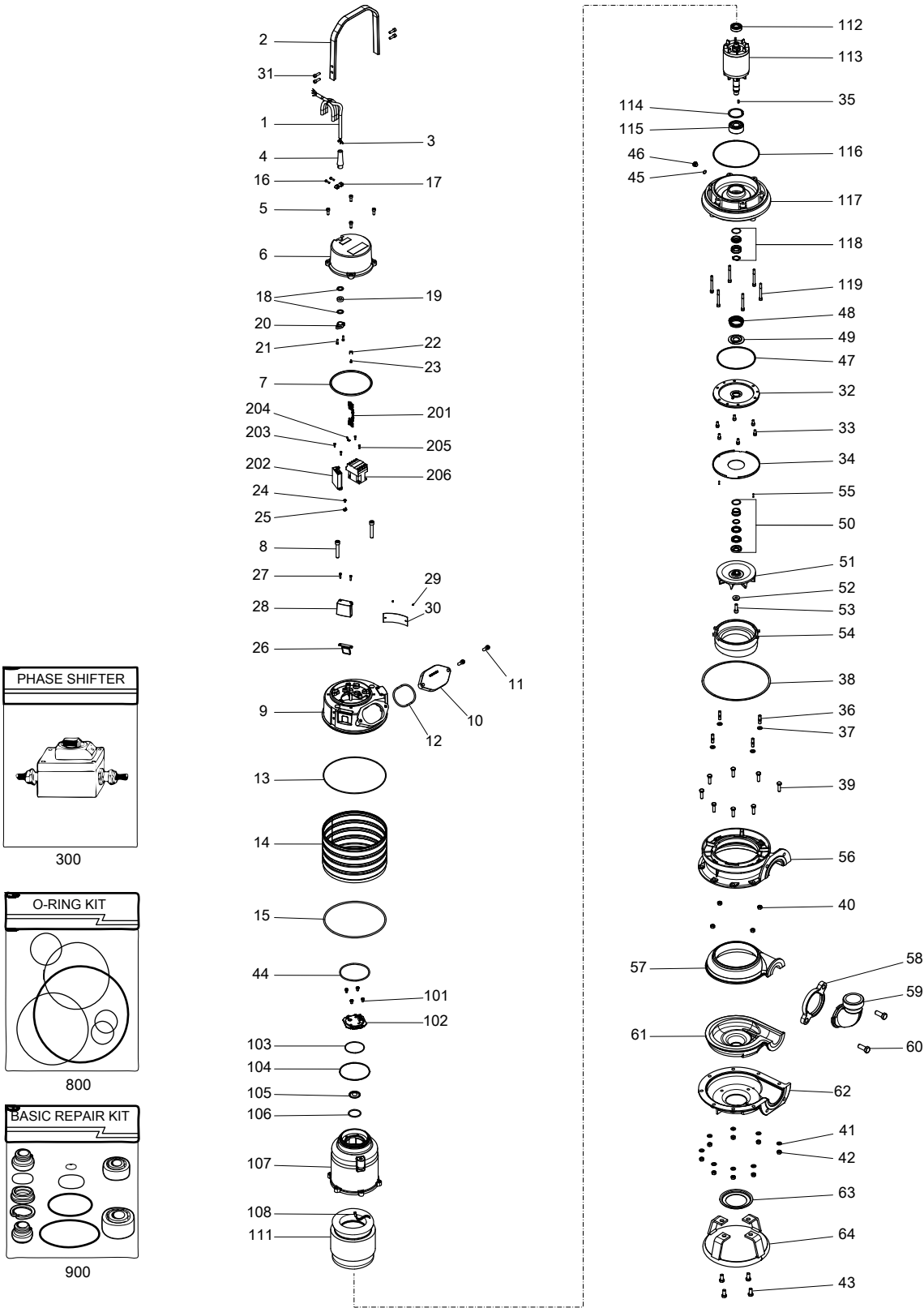


1. Pump type number
2. Frequency
3. Phases, type of current
4. Rated shaft power
5. Thermal class
6. Locked rotor code-letter
7. Country of origin
8. Maximum power consumption
9. Product weight
10. Maximum submersion depth
11. Degree of protection
12. Maximum capacity
13. Rated current
14. Direction of the start reaction
15. Direction of the impeller rotation
16. Maximum head
17. Serial number
18. Rated voltage
19. Pump model

Product approvals for hazardous locations

Exploded Views

8120.280



20187A_expl_view_8119.280_8120.280

Spare Parts

8120.280

Pos. No	Part. No	Denomination		Qty/Version
				280
1	131 039	Motor cable subcab	Power cable x 1 SUBCAB 4G2,5 12,50 - 13,50mm L= 20m Starter (Phase shifter) 3-phase 220V - 575 V Current range: 0 - 16 A	*
1	133 139	Motor cable subcab	Power cable x 1 SUBCAB 4G4 16 - 17mm L= 20m Starter 3-phase 50/60 Hz Current range: 0 - 22 A	*
1	410 065	Motor cable subcab	Power cable x 1 SUBCAB 14AWG/4 14,20 - 15,20mm L= 16m Starter (Phase shifter) 3-phase 220V - 575 V Current range: 0 - 16 A	*
2	50 721 00	Lifting handle		1
3	50 040 04	Flat pin sleeve 1-2.5MM2		4
3	50 040 05	Insulating sleeve 0.5-6 MM2		4
3	50 040 07	Flat pin sleeve 2.5-6MM2		4
4	50 428 01	Bending protection	SUBCAB 4G2,5 12,50 - 13,50mm	1
4	50 428 03	Bending protection	SUBCAB 4G4 16 - 17mm	1
4	50 428 02	Bending protection	SUBCAB 14AWG/4 14,20 - 15,20mm	1
5	50 021 33	Hex.socket hd screw M8X20-A4-80		4
6	50 708 00	Entrance cover		1
7	50 037 22	O-ring 159.3X5.7 FPM		1
8	50 023 00	Hex.socket hd screw M12X70-A4-70		2
9	50 737 00	Main cover		1
10	50 724 00	Inspection cover		1
11	50 022 16	Hex.socket hd screw M10X30-A4-80		2
12	50 037 23	O-ring 104.14X5.34 FPM		1
13	50 037 24	O-ring 259.3X3.0 FPM		1
14	50 064 03	Outer casing		1
15	50 037 68	O-ring 249.3X5.7 FPM		1

Pos. No	Part. No	Denomination	Qty/Version
			280
16	50 019 00	Hex.socket hd screw M5X18-A4-70	2
17	50 725 00	Cable clip	1
18	50 016 14	Plain washer 14.5X26.5X2- A4-70	No of cable entries: 1 (12)-14mm 2
18	50 016 15	Plain washer 16.5X26.5X2- A4-70	No of cable entries: 1 (14)-16mm 2
18	50 016 16	Plain washer 18.5X26.5X2- A4-70	No of cable entries: 1 (16)-18mm 2
19	50 015 01	Seal sleeve	No of cable entries: 1 (12)-14mm 1
19	50 015 02	Seal sleeve	No of cable entries: 1 (14)-16mm 1
19	50 015 03	Seal sleeve	No of cable entries: 1 (16)-18mm 1
20	50 726 00	Entrance flange	1
21	50 019 00	Hex.socket hd screw M5X18-A4-70	2
22	50 119 00	Flat pin sheet	1
23	50 018 04	Hex.socket hd screw M4X6- A4-70	1
24	133 525	Earthing screw	1
25	50 119 00	Flat pin sheet	1
26	50 013 00	Air release valve	2
27	50 019 00	Hex.socket hd screw M5X18-A4-70	4
28	50 722 00	Air release valve	2
29	410 393	Drive screw 4X5-A4	2
30	50 888 00	Plate-blank	1
31	50 021 30	Hex.socket hd screw M8X25-A4-80	4
32	50 715 00	Oil housing bottom	1
33	50 021 32	Hex.socket hd screw M8X16-A4-70	6
34	50 703 00	Guide plate	1
35	50 205 03	Parallel key 5X5X14- A4-220HB	1
36	50 022 20	Stud	4
37	130 896	Gasket	4
38	131 544	Gasket	1
39	410 404	Hexagon head screw M10X35-A4-70	8
40	50 022 22	Hexagon nut M10-A4-70	4
41	50 022 26	Plain washer 10-A4-170HV	8

Pos. No	Part. No	Denomination	Qty/Version
			280
42	50 022 22	Hexagon nut M10-A4-70	8
43	-	Hexagon head screw M12X25-A4-70	4
44	50 037 07	O-ring 117.5X5.34 FPM	1
45	50 037 13	O-ring 12.37X2.62 FPM	1
46	50 705 00	Inspection screw	1
47	50 037 25	O-ring 156X3 FPM	1
48	50 559 01	Compression spring	1
49	50 740 00	Plate	1
50	50 789 00	Mechanical seal	1
51	50 805 00	Impeller	1
		N 50Hz 3-phase Max ambient temp=40 DC Mtrl. Stainless steel, castings	
51	50 805 01	Impeller	1
		N 60Hz 3-phase Max ambient temp=40 DC Mtrl. Stainless steel, castings	
52	50 022 27	Plain washer 10.5X28X6	1
53	133 148	Hex.socket hd screw M10X25	1
54	50 823 00	Wear ring	1
55	50 739 00	Parallel pin 3X16	2
56	50 717 00	Pump housing upper	1
57	132 041	Wear protection	1
58	50 727 00	Connection flange	1
59	50 735 00	Discharge connection	1
		DN 75 Hose	
59	50 735 01	Discharge connection	1
		DN 75 Thread : ISO G3A Outer	
59	50 735 02	Discharge connection	1
		DN 75 Thread : NPT 3-8 Outer	
59	50 736 00	Discharge connection	1
		DN 100 Hose	
59	50 736 01	Discharge connection	1
		DN 100 Thread : ISO G4A Outer	
59	50 736 02	Discharge connection	1
		DN 100 Thread : NPT 4-8 Outer	
60	50 024 07	Hexagon head screw M16X40-A4-70	2
61	132 042	Wear protection	1
62	50 718 00	Pump housing lower	1
63	131 554	End washer	1
64	50 818 00	Stand	1
65	130 818	Retaining ring 25-SPRING STEEL	1

Pos. No	Part. No	Denomination	Qty/Version
			280
66	50 040 05	Insulating sleeve 0.5-6 MM2	8
66	50 040 05	Insulating sleeve 0.5-6 MM2	11
67	50 040 05	Insulating sleeve 0.5-6 MM2	8
67	50 040 05	Insulating sleeve 0.5-6 MM2	11
68	50 040 09	Flat pin sleeve 0.75-1.5MM2	2
69	50 040 04	Flat pin sleeve 1-2.5MM2	6
69	50 040 04	Flat pin sleeve 1-2.5MM2	9
70	50 221 02	End sleeve 2.5 MM2; L=7 MM	4
		SUBCAB 14AWG/4 14,20 - 15,20mm L= 16m	
		SUBCAB 4G2,5 12,50 - 13,50mm L= 20m	
70	50 221 03	End sleeve 4 MM2; L=10 MM	4
		SUBCAB 4G4 16 - 17mm L= 20m	
71	105 839	Cable tie 98X2.5 MM	1
72	-	Marking tape	1
73	410 053	Oil ISO VG 32	*
74	410 139	Insulating hose D=12 MM	*
75	50 898 00	Marking tape	1
76	50 509 00	Cable set	1
77	50 992 00	Sticker CUT HAZARD	1
78	51 735 00	Sticker	2
78	51 735 01	Sticker	2
79	51 622 00	Connection plate	1
80	410 034	Closed-end splice 3-6(AWG 12-10) L=18	3
101	50 021 31	Slotted head screw M8X10-A4	4
102	50 009 01	Connection term boar	1
103	50 037 27	O-ring 74.61X3.53 FPM	1
104	50 037 09	O-ring 119.5X3 FPM	1
105	140 326	Bearing cover	1
106	50 037 26	O-ring 47.2X3.53 FPM	1
107	50 762 00	Stator housing	1
108	410 034	Closed-end splice 3-6(AWG 12-10) L=18	3
111	50 306 05	Stator 19-10-2b	1
		6-leads 3-phase 50 Hz 2-poles 380V-415V Y	

Pos. No	Part. No	Denomination	Qty/Version
			280
111	50 306 09	Stator 19-10-2b 6-leads 3-phase 50 Hz 2-poles 500V-550V D	1
111	50 306 14	Stator 19-10-2b 9-leads 3-phase 60 Hz 2-poles 440V-460V YSER 220V-230V Y//	1
111	50 306 16	Stator 19-10-2b 6-leads 3-phase 60 Hz 2-poles 575V-600V D	1
112	140 337	Ball bearing 20X47X14	1
113	50 731 00	Shaft unit	1
114	140 064	Retaining ring SGH 62	1
115	140 059	Ball bearing 25X62X25.4	1
116	50 037 17	O-ring 183.5X3 FPM	1
117	50 714 00	Bearing holder	1
118	50 534 00	Mechanical seal	1
119	50 021 27	Hex.socket hd screw M8X75-A4-70	6
120	51 800 00	Sticker	1
201	50 035 01	Cable unit	1
202	51 511 05	Motor protector SMART 50Hz 380V - 415V 50Hz 500V	1
202	51 511 06	Motor protector SMART 60Hz 575V - 600V 60Hz 440V - 460V	1
203	50 018 00	Hex.socket hd screw M4X12-A4-70	2
204	50 119 00	Flat pin sheet	1
205	50 018 00	Hex.socket hd screw M4X12-A4-70	2
206	50 353 17	Contactor 50Hz 380V - 415V	1
206	410 812	Contactor 60Hz 440V - 460V 50Hz 500V	1
206	410 891	Contactor 60Hz 575V - 600V	1
300	50 102 00	Phase shifter Current range: 0 - 16 A	1
300	50 102 01	Phase shifter Current range: 0 - 22 A	1
400	50 100 01	Plug contact 3-phase 380V - 415 V Supply connection CEE 5-PLUG 32A	1
400	50 100 10	Plug contact 500V - 16 A	1
400	50 100 11	Plug contact 500V - 32 A	1
800	50 085 12	O-ring kit FPM	1
801	-	Zinc anode kit	1
900	51 173 00	Basic repair kit	1



Grindex
Gesällvägen 33
174 07 Sundbyberg
Sweden
Tel: +46-8-606 66 00
Fax: +46-8-745 53 28
www.grindex.com

Visit our Web site for the latest version of this document
and more information

The original instruction is in English. All non-English
instructions are translations of the original instruction.

© 2014 Grindex