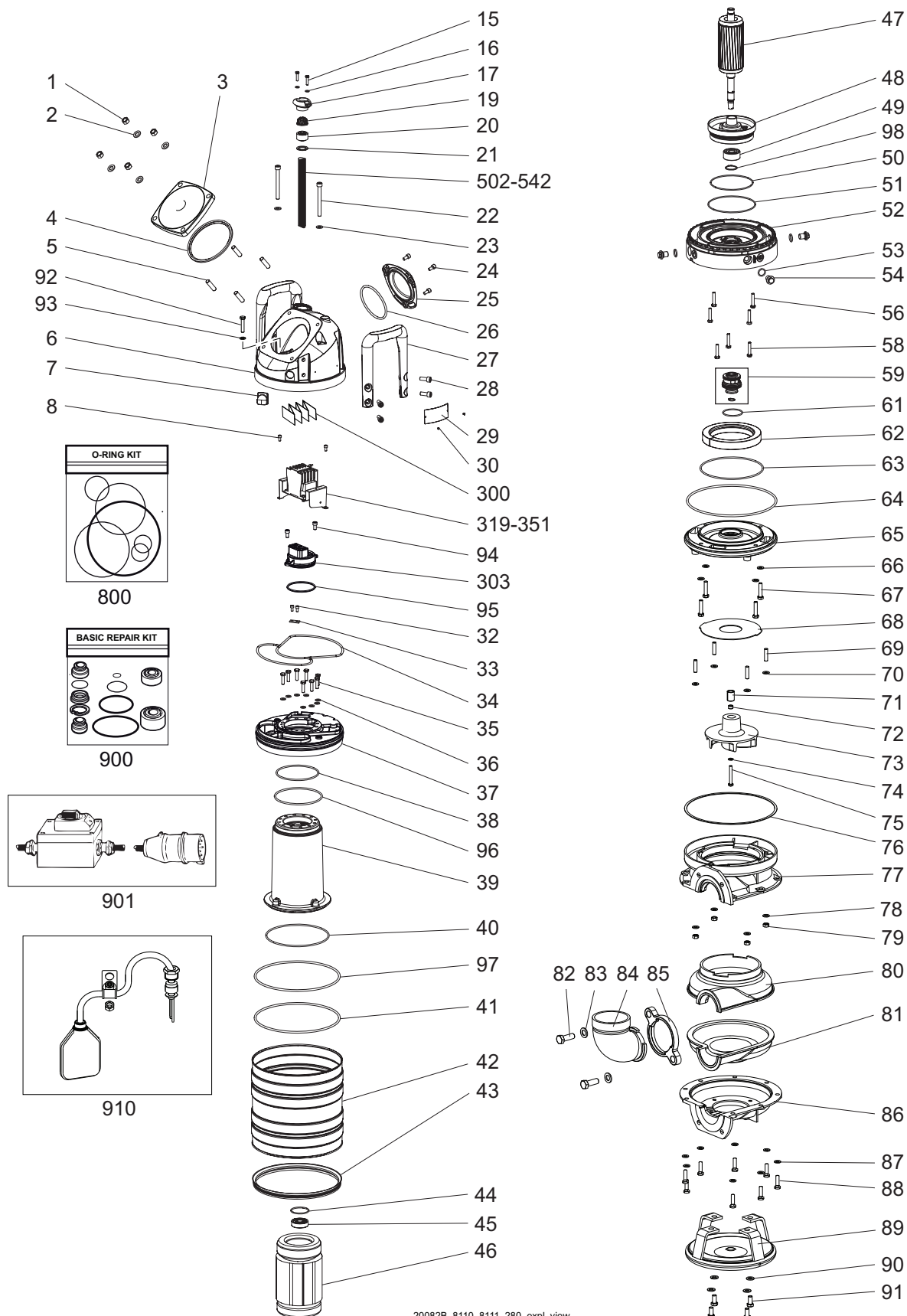


# Parts List

## Senior 8110.280



www.grindex.com





# Parts List

Senior 8110.280

## Overview

### Table of Contents

This publication contains the following topics:

### Topic

Introduction .....	4
Practical Information .....	5
Data Plate Interpretation.....	6
Order parts.....	7
Spare Parts.....	8

# Introduction

## Purpose

The purpose of this manual is to give the reader information about available spare parts and accessories for the product.

---

## Recipient

The manual is principally intended for Grindex

- customers
  - service personnel
  - sales personnel
- 

## Contact

For more information

- contact your Grindex representative
  - visit <http://www.grindex.com/>
- 

## Reference

More information about the product is available in the following documents:

- Installation, Operation and Maintenance
  - Grindex accessories list
-

# Practical Information

## Overview

### Table of Contents

This chapter contains the following topics:

Topic	
Data Plate Interpretation .....	6
Data Plate.....	6
Order parts .....	7

# Data Plate Interpretation

## Introduction

The Grindex product is always provided with data plates:

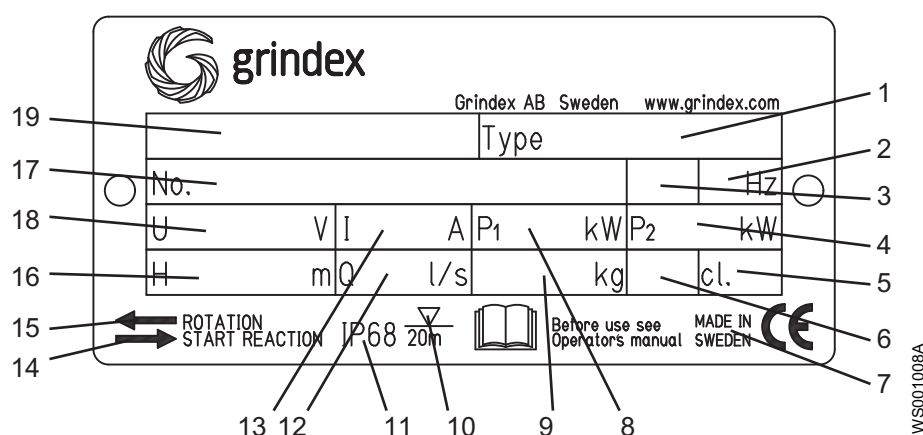
- The general data plate is used on all products.
- The approval plate is added to all explosion proof products.

## Data Plate

The product may only be operated within the parameters stated on the data plate.

## Illustration

This is an illustration of a general data plate.



## Field description

This table shows the fields on the general data plate, and which information each field contains.

Field	Description	Field	Description
1	Pump type number	11	Degree of protection
2	Frequency	12	Maximum capacity
3	Phases, type of current	13	Rated current
4	Rated shaft power	14	Direction of the start reaction
5	Thermal class	15	Direction of the impeller rotation
6	Locked rotor code-letter	16	Maximum head
7	Country of origin	17	Serial number
8	Maximum power consumption	18	Rated voltage
9	Product weight	19	Pump model
10	Maximum submersion depth	-	-

# Order parts

<b>Order</b>	When ordering spare parts, state product number and serial number of the product, spare part number and quantity.
<b>Requirements</b>	Genuine Grindex parts must always be used for repairs if the product is to fulfill requirements and obtain official approval.
<b>Specially Approved Products</b>	Spare parts marked with (EX) after the part number are subject to dimensional accuracy inspection.

# Spare Parts

## NOTE!

Parts with position numbers that end with .9xx are NOT included in the unit and must be ordered separately.

Pos. No	Part. No	Denomination	Qty/Version 280
1	410 011	Hexagon nut M12-A4-70	4
3	50 880 00	Cover	1
4	50 897 00	U-ring	1
5	410 171	Stud M12X35-A2-70	4
6	51 606 00	Main cover	1
6	51 606 01	Main cover FOR FLOAT SWITCH	1
7	50 836 00	Air release valve	1
8	410 026	Hex.socket hd screw M6X12-A4-70	2
12	132 274	Plain washer 12-A2-A 170	4
15	410 001	Hexagon head screw M6X25-A4-70	2
16	410 013	Plain washer 6-A4-170	2
17	50 932 00	Entrance flange (10)-20MM	1
17	50 932 01	Entrance flange (22)-26MM	1
19	50 926 00	Cable clip (10)-12 MM	1
19	50 926 01	Cable clip (12)-14 MM	1
19	50 926 02	Cable clip (14)-16 MM	1
19	50 926 03	Cable clip (16)-18 MM	1
19	50 926 04	Cable clip (18)-20 MM	1
19	50 926 05	Cable clip (20)-22 MM	1
19	50 926 06	Cable clip (22)-24 MM	1
19	50 926 07	Cable clip (24)-26 MM	1
20	410 727	Seal sleeve (10)-12 MM	1
20	410 728	Seal sleeve (12)-14 MM	1
20	410 729	Seal sleeve (14)-16 MM	1
20	410 730	Seal sleeve (16)-18 MM	1
20	410 731	Seal sleeve (18)-20 MM	1
20	410 732	Seal sleeve (20)-22 MM	1
20	410 733	Seal sleeve (22)-24 MM	1
20	410 734	Seal sleeve (24)-26 MM	1
21	50 127 00	Plain washer (24)-26 MM	1
21	50 127 04	Plain washer (10)-22 MM	1
22	50 022 31	Hex.socket hd screw M10X150-A2-70	2
23	50 022 26	Plain washer 10-A4-170	2



Pos. No	Part. No	Denomination	Qty/Version 280
24	50 021 32	Hex.socket hd screw M8X16-A4-70	3
25	50 856 00	Cover	1
26	410 016	O-ring 109.1X5.7 NBR	1
27	50 857 00	Handle	2
28	50 022 17	Hex.socket hd screw M10X25-A4-70	8
29	50 888 00	Plate-blank	1
30	410 000	Drive screw 4X5-A2-70	4
32	410 026	Hex.socket hd screw M6X12-A4-70	4
33	50 902 00	Earthing plate	2
34	50 945 00	Gasket	1
35	410 002	Hexagon head screw M8X30-A4-70	8
36	50 021 38	Plain washer 8-A4-170	8
37	51 605 00	Cover	1
38	410 020	O-ring 127.0X4.0 NBR	1
39	50 949 00	Stator housing	1
40	410 021	O-ring 192.0X4.0 NBR	1
41	132 415	O-ring 259.3X5.7 NBR	1
42	50 858 00	Cooling jacket	1
43	50 987 00	Seal ring	1
44	410 023	O-ring 52.5X3.0 FPM	1
45	50 287 04	Ball bearing 6304-2Z/C3WT 20X52X15	1
46	51 108 01	Stator 15-14-4a	1
46	51 108 02	Stator 15-14-4a	1
46	51 108 03	Stator 15-14-4a	1
46	51 108 04	Stator 15-14-4a	1
46	51 108 05	Stator 15-14-4a	1
46	51 108 06	Stator 15-14-4a	1
46	51 108 07	Stator 15-14-4a	1
46	51 108 08	Stator 15-14-4a	1
46	51 108 09	Stator 15-14-4a	1
46	51 108 11	Stator 15-14-4a	1
47	51 107 01	Shaft unit	1
48	50 950 00	Bearing housing	1

Use 50 907 00 (EU), 50 907 01 (US) as spare part.

50Hz: 380V-400V D. 60Hz: 440V-480V D.

50Hz: 415V-440V D.

60Hz: 380V-400V D.

60Hz: 440V-480V YSER, 220V-240V Y//, 1-phase 230V.

50Hz: 400V Y, 220V-240V D.

60Hz: 220V-240V D.

60Hz: 200V-208V D.

50Hz: 500V D. 60Hz: 575V-600V D.

50Hz: 550V D.

60Hz: 460V DSER, 380V Y//, 230V D//.

Pos. No	Part. No	Denomination	Qty/Version 280
49	410 031	Ball bearing 3304A-2Z/C3VT113	1
50	410 018	O-ring 129.5X3 NBR	1
51	140 377	O-ring 144.5X3.0 NBR	1
52	50 951 00	Adapter	1
53	133 064	O-ring 19.2X3 NBR	3
54	133 063	Inspection screw	3
56	410 533	Hexagon flange screw M8X40-A2-70	4
58	410 533	Hexagon flange screw M8X40-A2-70	3
59	50 901 23	Mechanical seal	1
61	410 083	O-ring 57.5X3.0 FPM	1
62	410 041	Pressure equalizer	1
63	410 021	O-ring 192.0X4.0 NBR	1
64	132 415	O-ring 259.3X5.7 NBR	1
65	51 097 00	Seal housing cover	1
66	50 022 26	Plain washer 10-A4-170	4
67	410 072	Hexagon head screw M10X45-A2-70	4
68	50 882 00	Guide plate	1
69	410 170	Stud M10X28-A2-70	4
70	130 896	Gasket	4
71	50 974 00	Sleeve	1
72	50 931 00	Adjustment screw	1
73	50 864 00	Impeller 50Hz.	1
73	50 864 01	Impeller 60Hz.	1
74	50 021 38	Plain washer 8-A4-170	1
75	410 006	Hexagon head screw M8X60-A4-80	1
76	131 544	Gasket	1
77	131 559	Pump housing upper	1
78	50 022 26	Plain washer 10-A4-170	4
79	50 022 22	Hexagon nut M10-A4-70	4
80	50 153 00	Wear protection UPPER	1
81	50 154 00	Wear protection LOWER	1
82	410 168	Hexagon head screw M16X45-A4-70	2
83	132 258	Plain washer 16-A2-A-170	2
84	131 622	Discharge connection DN100 HOSE 4", ALU.	1

Pos. No	Part. No	Denomination	Qty/Version 280
84	131 623	Discharge connection DN100 G4" OUTER, ALU.	1
84	131 624	Discharge connection DN100 NPSM 4-8 OUTER,ALU.	1
84	131 787	Discharge connection DN75 HOSE 3", ALU.	1
84	132 048	Discharge connection DN75 G3" OUTER, ALU.	1
84	132 049	Discharge connection DN75 NPSM 3-8 OUTER, ALU.	1
84	50 198 00	Discharge connection DN75 NPT3-8 OUT.CAST IRON	1
84	50 198 01	Discharge connection DN75 HOSE 3", CAST IRON	1
84	50 198 02	Discharge connection DN75 G3" OUTER, CAST IRON	1
84	50 199 00	Discharge connection DN100 NPT4-8 OUT.CASTIRON	1
84	50 199 01	Discharge connection DN100 HOSE 4", CAST IRON	1
84	50 199 02	Discharge connection DN100 G4" OUTER,CAST IRON	1
85	131 625	Connection flange	1
86	50 155 00	Pump housing	1
87	50 022 26	Plain washer 10-A4-170	8
88	410 404	Hexagon head screw M10X35-A4-70	8
89	131 551	Stand complete	1
90	132 274	Plain washer 12-A2-A 170	4
91	131 553	Hexagon head screw M12X25-A2-70	4
92	410 736	Hex.socket hd screw M8X90-A2-70	1
93	50 021 38	Plain washer 8-A4-170	1
94	140 049	Hex.socket hd screw M8X16-A2-70	2
95	410 623	O-ring 78X4 NBR	1
96	410 711	O-ring 145.29X1.78 NBR	2
97	132 415	O-ring 259.3X5.7 NBR	2
98	50 278 02	Retaining ring SGA 20	1
300	51 624 00	Connection plate	1
303	51 642 00	Terminal plate unit	1
319	51 082 38	CONTACTOR UNIT	1
319.1	410 008	Hex.socket hd screw M4X16-A2-70	2

50Hz: 220V - 240V D.

Pos. No	Part. No	Denomination	Qty/Version 280
319.2	410 008	Hex.socket hd screw M4X16-A2-70	2
319.3	410 012	Lock nut	2
319.4	410 012	Lock nut	2
319.5	410 764	Contactor	1
319.6	50 900 62	Single-core cable	1
319.7	51 083 00	Holder	1
319.8	50 509 00	Cable set	1
319.9	51 511 07	Motor protector SMART	1
319.946	51 639 00	Cable set	Ordered separately. 1
321	51 082 39	CONTACTOR UNIT	50Hz: 415V - 440V D. 1
321.1	410 008	Hex.socket hd screw M4X16-A2-70	2
321.2	410 008	Hex.socket hd screw M4X16-A2-70	2
321.3	410 012	Lock nut	2
321.4	410 012	Lock nut	2
321.6	50 900 62	Single-core cable	1
321.7	51 083 00	Holder	1
321.8	50 509 00	Cable set	1
321.9	51 511 05	Motor protector SMART	1
321.946	51 639 00	Cable set	Ordered separately. 1
322	51 082 40	CONTACTOR UNIT	50Hz: 500V D. 1
322.1	410 008	Hex.socket hd screw M4X16-A2-70	2
322.2	410 008	Hex.socket hd screw M4X16-A2-70	2
322.3	410 012	Lock nut	2
322.4	410 012	Lock nut	2
322.5	410 766	Contactor	1
322.6	50 900 62	Single-core cable	1
322.7	51 083 00	Holder	1
322.8	50 509 00	Cable set	1
322.9	51 511 05	Motor protector SMART	1
322.946	51 639 00	Cable set	Ordered separately. 1
325	51 082 42	CONTACTOR UNIT	50Hz: 380V - 400V Y. 1
325.1	410 008	Hex.socket hd screw M4X16-A2-70	4
325.2	410 008	Hex.socket hd screw M4X16-A2-70	4
325.3	410 012	Lock nut	4
325.4	410 012	Lock nut	4

Pos. No	Part. No	Denomination	Qty/Version 280
325.5	410 160	Contactor	1
325.6	50 900 62	Single-core cable	2
325.7	51 083 00	Holder	2
325.8	50 509 00	Cable set	2
325.9	51 511 05	Motor protector SMART	2
325.946	51 639 00	Cable set	Ordered separately. 1
325.961	410 034	Closed end splice 3-6(AWG 12-10) L=18	Ordered separately. 1
332	51 082 36	CONTACTOR UNIT	60Hz: 200V - 220V D. 1
332.1	410 008	Hex.socket hd screw M4X16-A2-70	2
332.2	410 008	Hex.socket hd screw M4X16-A2-70	2
332.3	410 012	Lock nut	2
332.4	410 012	Lock nut	2
332.5	410 764	Contactor	1
332.6	50 900 62	Single-core cable	1
332.7	51 083 00	Holder	1
332.8	50 509 00	Cable set	1
332.9	51 511 08	Motor protector SMART	1
332.946	51 639 00	Cable set	Ordered separately. 1
334	51 082 36	CONTACTOR UNIT	60Hz: 230V - 240V D. 1
334.1	410 008	Hex.socket hd screw M4X16-A2-70	2
334.2	410 008	Hex.socket hd screw M4X16-A2-70	2
334.3	410 012	Lock nut	2
334.4	410 012	Lock nut	2
334.5	410 764	Contactor	1
334.6	50 900 62	Single-core cable	1
334.7	51 083 00	Holder	1
334.8	50 509 00	Cable set	1
334.9	51 511 08	Motor protector SMART	1
334.946	51 639 00	Cable set	Ordered separately. 1
335	51 082 43	CONTACTOR UNIT	60Hz: 380V - 400V D. 1
335.1	410 008	Hex.socket hd screw M4X16-A2-70	2
335.2	410 008	Hex.socket hd screw M4X16-A2-70	2
335.3	410 012	Lock nut	2
335.4	410 012	Lock nut	2
335.6	50 900 62	Single-core cable	1

Pos. No	Part. No	Denomination	Qty/Version 280
335.7	51 083 00	Holder	1
335.8	50 509 00	Cable set	1
335.9	51 511 06	Motor protector SMART	1
335.946	51 639 00	Cable set Ordered separately.	1
337	51 082 44	CONTACTOR UNIT 60Hz: 440V - 480V D.	1
337.1	410 008	Hex.socket hd screw M4X16-A2-70	4
337.2	410 008	Hex.socket hd screw M4X16-A2-70	4
337.3	410 012	Lock nut	4
337.4	410 012	Lock nut	4
337.5	410 767	Contactor	1
337.6	50 900 62	Single-core cable	2
337.7	51 083 00	Holder	2
337.8	50 509 00	Cable set	2
337.9	51 511 06	Motor protector SMART	2
337.946	51 639 00	Cable set Ordered separately.	1
337.960	410 033	Closed end splice 5.1-10.6;(AWG 18-8) L=38 Ordered separately.	1
338	51 082 17	CONTACTOR UNIT 60Hz: 575V - 600V D.	1
338.1	410 008	Hex.socket hd screw M4X16-A2-70	4
338.2	410 012	Lock nut	4
338.3	410 766	Contactor	1
338.4	50 900 62	Single-core cable	1
338.5	51 083 00	Holder	1
338.6	50 509 00	Cable set	1
338.7	51 511 06	Motor protector SMART	1
338.920	410 024	Terminal board Ordered separately.	1
338.946	51 639 00	Cable set Ordered separately.	1
339	51 082 36	CONTACTOR UNIT 60Hz: 220V - 240V Y//.	1
339.1	410 008	Hex.socket hd screw M4X16-A2-70	2
339.2	410 008	Hex.socket hd screw M4X16-A2-70	2
339.3	410 012	Lock nut	2
339.4	410 012	Lock nut	2
339.5	410 764	Contactor	1
339.6	50 900 62	Single-core cable	1
339.7	51 083 00	Holder	1
339.8	50 509 00	Cable set	1
339.9	51 511 08	Motor protector SMART	1

Pos. No	Part. No	Denomination	Qty/Version 280
339.946	51 639 00	Cable set	Ordered separately. 1
339.960	410 033	Closed end splice 5.1-10.6;(AWG 18-8) L=38	Ordered separately. 1
340	51 082 43	CONTACTOR UNIT	60Hz: 380V - 400V D. Not CSA approved. 1
340.1	410 008	Hex.socket hd screw M4X16-A2-70	2
340.2	410 008	Hex.socket hd screw M4X16-A2-70	2
340.3	410 012	Lock nut	2
340.4	410 012	Lock nut	2
340.6	50 900 62	Single-core cable	1
340.7	51 083 00	Holder	1
340.8	50 509 00	Cable set	1
340.9	51 511 06	Motor protector SMART	1
341	51 082 44	CONTACTOR UNIT	60Hz: 400V - 480V YSER. 1
341.1	410 008	Hex.socket hd screw M4X16-A2-70	4
341.2	410 008	Hex.socket hd screw M4X16-A2-70	4
341.3	410 012	Lock nut	4
341.4	410 012	Lock nut	4
341.5	410 767	Contactor	1
341.6	50 900 62	Single-core cable	2
341.7	51 083 00	Holder	2
341.8	50 509 00	Cable set	2
341.9	51 511 06	Motor protector SMART	2
341.946	51 639 00	Cable set	Ordered separately. 1
341.961	410 034	Closed end splice 3-6(AWG 12-10) L=18	Ordered separately. 3
350	51 082 38	CONTACTOR UNIT	50Hz: 220V - 230V D, for float switch. 1
350.1	410 008	Hex.socket hd screw M4X16-A2-70	2
350.2	410 008	Hex.socket hd screw M4X16-A2-70	2
350.3	410 012	Lock nut	2
350.4	410 012	Lock nut	2
350.5	410 764	Contactor	1
350.6	50 900 62	Single-core cable	1
350.7	51 083 00	Holder	1
350.8	50 509 00	Cable set	1
350.9	51 511 07	Motor protector SMART	1

Pos. No	Part. No	Denomination	Qty/Version 280
350.946	51 639 00	Cable set Ordered separately.	1
350.958	51 604 00	Fixing plate Ordered separately.	1
350.968	410 077	Cable clamp Ordered separately.	1
350.976	51 278 00	Bending protection Ordered separately.	1
350.995	410 370	Plain washer Ordered separately.	1
350.997	50 021 36	Lock nut M8-A4-70 Ordered separately.	1
351	51 082 42	CONTACTOR UNIT 50Hz: 400V Y, for float switch.	1
351.1	410 008	Hex.socket hd screw M4X16-A2-70	4
351.2	410 008	Hex.socket hd screw M4X16-A2-70	4
351.3	410 012	Lock nut	4
351.4	410 012	Lock nut	4
351.5	410 160	Contactor	1
351.6	50 900 62	Single-core cable	2
351.7	51 083 00	Holder	2
351.8	50 509 00	Cable set	2
351.9	51 511 05	Motor protector SMART	2
351.946	51 639 00	Cable set Ordered separately.	1
351.958	51 604 00	Fixing plate Ordered separately.	1
351.961	410 034	Closed end splice 3-6(AWG 12-10) L=18 Ordered separately.	1
351.968	410 077	Cable clamp Ordered separately.	1
351.976	51 278 00	Bending protection Ordered separately.	1
351.995	410 370	Plain washer Ordered separately.	1
351.997	50 021 36	Lock nut M8-A4-70 Ordered separately.	1
392	51 669 00	CONTACTOR UNIT 50Hz: 380V - 415V Y. For float switch.	1
392.1	410 008	Hex.socket hd screw M4X16-A2-70	6
392.2	410 012	Lock nut	6
392.3	410 772	Transformer 24V	1
392.4	410 771	Contactor	1
392.5	50 995 00	Holder	1
392.6	50 509 00	Cable set	2
392.7	51 511 05	Motor protector SMART	1
392.946	51 639 00	Cable set Ordered separately.	1
392.958	51 604 00	Fixing plate Ordered separately.	1
392.961	410 034	Closed end splice 3-6(AWG 12-10) L=18 Ordered separately.	1
392.968	410 077	Cable clamp Ordered separately.	1



Pos. No	Part. No	Denomination	Qty/Version 280
392.975	410 503	Hex.socket hd screw M6X12-A2-70	Ordered separately. 3
392.976	51 278 00	Bending protection	Ordered separately. 1
392.983	410 759	Flat pin sleeve 1.0-2.6MM2	Ordered separately. 1
392.995	410 370	Plain washer	Ordered separately. 1
392.997	50 021 36	Lock nut M8-A4-70	Ordered separately. 1
393	51 669 02	CONTACTOR UNIT	50Hz: 500V - 550V Y. For float switch. 1
393.1	410 008	Hex.socket hd screw M4X16-A2-70	6
393.2	410 012	Lock nut	6
393.3	410 773	Transformer 24V	1
393.4	410 771	Contactor	1
393.5	50 995 00	Holder	1
393.6	50 509 00	Cable set	2
393.7	51 511 05	Motor protector SMART	1
393.946	51 639 00	Cable set	Ordered separately. 1
393.958	51 604 00	Fixing plate	Ordered separately. 1
393.961	410 034	Closed end splice 3-6(AWG 12-10) L=18	Ordered separately. 1
393.968	410 077	Cable clamp	Ordered separately. 1
393.975	410 503	Hex.socket hd screw M6X12-A2-70	Ordered separately. 3
393.976	51 278 00	Bending protection	Ordered separately. 1
393.983	410 759	Flat pin sleeve 1.0-2.6MM2	Ordered separately. 1
393.995	410 370	Plain washer	Ordered separately. 1
393.997	50 021 36	Lock nut M8-A4-70	Ordered separately. 1
395	51 669 01	CONTACTOR UNIT	60Hz: 460V - 480V YSER. For float switch. 1
395.1	410 008	Hex.socket hd screw M4X16-A2-70	6
395.2	410 012	Lock nut	6
395.3	410 772	Transformer 24V	1
395.4	410 771	Contactor	1
395.5	50 995 00	Holder	1
395.6	50 509 00	Cable set	2
395.7	51 511 06	Motor protector SMART	1
395.946	51 639 00	Cable set	Ordered separately. 1
395.958	51 604 00	Fixing plate	Ordered separately. 1
395.961	410 034	Closed end splice 3-6(AWG 12-10) L=18	Ordered separately. 1
395.968	410 077	Cable clamp	Ordered separately. 1

Pos. No	Part. No	Denomination	Qty/Version 280
395.975	410 503	Hex.socket hd screw M6X12-A2-70	Ordered separately. 3
395.976	51 278 00	Bending protection	Ordered separately. 1
395.983	410 759	Flat pin sleeve 1.0-2.6MM2	Ordered separately. 1
395.995	410 370	Plain washer	Ordered separately. 1
395.997	50 021 36	Lock nut M8-A4-70	Ordered separately. 1
396	51 669 03	CONTACTOR UNIT	60Hz: 575V - 600V Y. For float switch. 1
396.1	410 008	Hex.socket hd screw M4X16-A2-70	6
396.2	410 012	Lock nut	6
396.3	410 773	Transformer 24V	1
396.4	410 771	Contactor	1
396.5	50 995 00	Holder	1
396.6	50 509 00	Cable set	2
396.7	51 511 06	Motor protector SMART	1
396.946	51 639 00	Cable set	Ordered separately. 1
396.958	51 604 00	Fixing plate	Ordered separately. 1
396.961	410 034	Closed end splice 3-6(AWG 12-10) L=18	Ordered separately. 1
396.968	410 077	Cable clamp	Ordered separately. 1
396.975	410 503	Hex.socket hd screw M6X12-A2-70	Ordered separately. 3
396.976	51 278 00	Bending protection	Ordered separately. 1
396.983	410 759	Flat pin sleeve 1.0-2.6MM2	Ordered separately. 1
396.995	410 370	Plain washer	Ordered separately. 1
396.997	50 021 36	Lock nut M8-A4-70	Ordered separately. 1
502	131 040	Motor cable 4G1.5 MM2 OD=10.5-11.5 MM	*
502.940	410 056	Insulating hose (10-16MM)	Ordered separately. *
503	410 062	Motor cable 4G1.5+2X1.5 OD=15.5-16.5	*
503.940	410 056	Insulating hose (10-16MM)	Ordered separately. *
504	131 039	Motor cable 4G2.5 MM2 OD=12.5-13.5 MM	*
504.940	410 056	Insulating hose (10-16MM)	Ordered separately. *
505	50 777 00	Motor cable 4G2.5+2X1.5 MM2 OD=17-18	*
505.941	132 354	Insulating hose (18-22MM)	Ordered separately. *
506	410 063	Motor cable 7G2.5+2X1.5 MM2 OD=20-23	*
506.941	132 354	Insulating hose (18-22MM)	Ordered separately. *

Pos. No	Part. No	Denomination	Qty/Version 280
523	410 065	Motor cable 14AWG/4 OD=14.2-15.2 MM	*
523.940	410 056	Insulating hose (10-16MM) Ordered separately.	*
524	410 067	Motor cable 12AWG/4 OD=17-18 MM	*
524.941	132 354	Insulating hose (18-22MM) Ordered separately.	*
525	410 068	Motor cable 12AWG/7 OD=20-22 MM	*
525.941	132 354	Insulating hose (18-22MM) Ordered separately.	*
527	410 069	Motor cable 10AWG/3-2-1-GC OD=20-22MM	*
527.941	132 354	Insulating hose (18-22MM) Ordered separately.	*
532	410 066	Motor cable 14AWG/7 OD=18-20 MM	*
532.941	132 354	Insulating hose (18-22MM) Ordered separately.	*
539	410 059	Motor cable SCREEN3X2.5MM2 OD=13.5-15	*
539.940	410 056	Insulating hose (10-16MM) Ordered separately.	*
540	410 060	Motor cable SCREEN 6X2.5MM2 OD=18-20	*
540.941	132 354	Insulating hose (18-22MM) Ordered separately.	*
542	410 061	Motor cable SCREEN 3X2.5+3X2.5 19-20	*
542.941	132 354	Insulating hose (18-22MM) Ordered separately.	*
542.950	410 054	Shrink hose ID 6.4 Ordered separately.	*
800	51 093 00	O-ring kit Contains all position numbered O-rings.	1
801	51 096 00	Anode unit	1
900	51 094 00	Basic repair kit	1
900.1	410 031	Ball bearing 3304A- 2Z/C3VT113	1
900.2	50 287 04	Ball bearing 6304-2Z/C3WT 20X52X15	1
900.3	410 041	Pressure equalizer	1
900.4	50 901 23	Mechanical seal	1
900.5	51 093 00	O-ring kit Contains all position numbered O-rings.	1
901	410 684	Plug contact CEE/16A/4- POL/380-415V	1
901	50 100 00	Plug contact 380-415 V 3 PH 16A CEE 5P	1
901	50 102 00	Phase shifter 220-575V 0-16A	1
901	50 102 01	Phase shifter 220-575V 0-22A	1

<b>Pos. No</b>	<b>Part. No</b>	<b>Denomination</b>	<b>Qty/Version 280</b>
910	51 155 00	Float switch kit MAX 400V	1
910	51 155 01	Float switch kit CE, MAX 250V, 24V	1
910	51 155 02	Float switch kit CSA, MAX 250V, 24V	1

\* Quantity per meter





Grindex AB • Box 7025 • SE-174 07 Sundbyberg • Sweden • Tel +46 8 606 66 00 • Fax +46 8 745 53 28 • [marketing@grindex.com](mailto:marketing@grindex.com)

*© Grindex AB. The original instruction is in English. All non-English instructions are translations of the original instruction.*