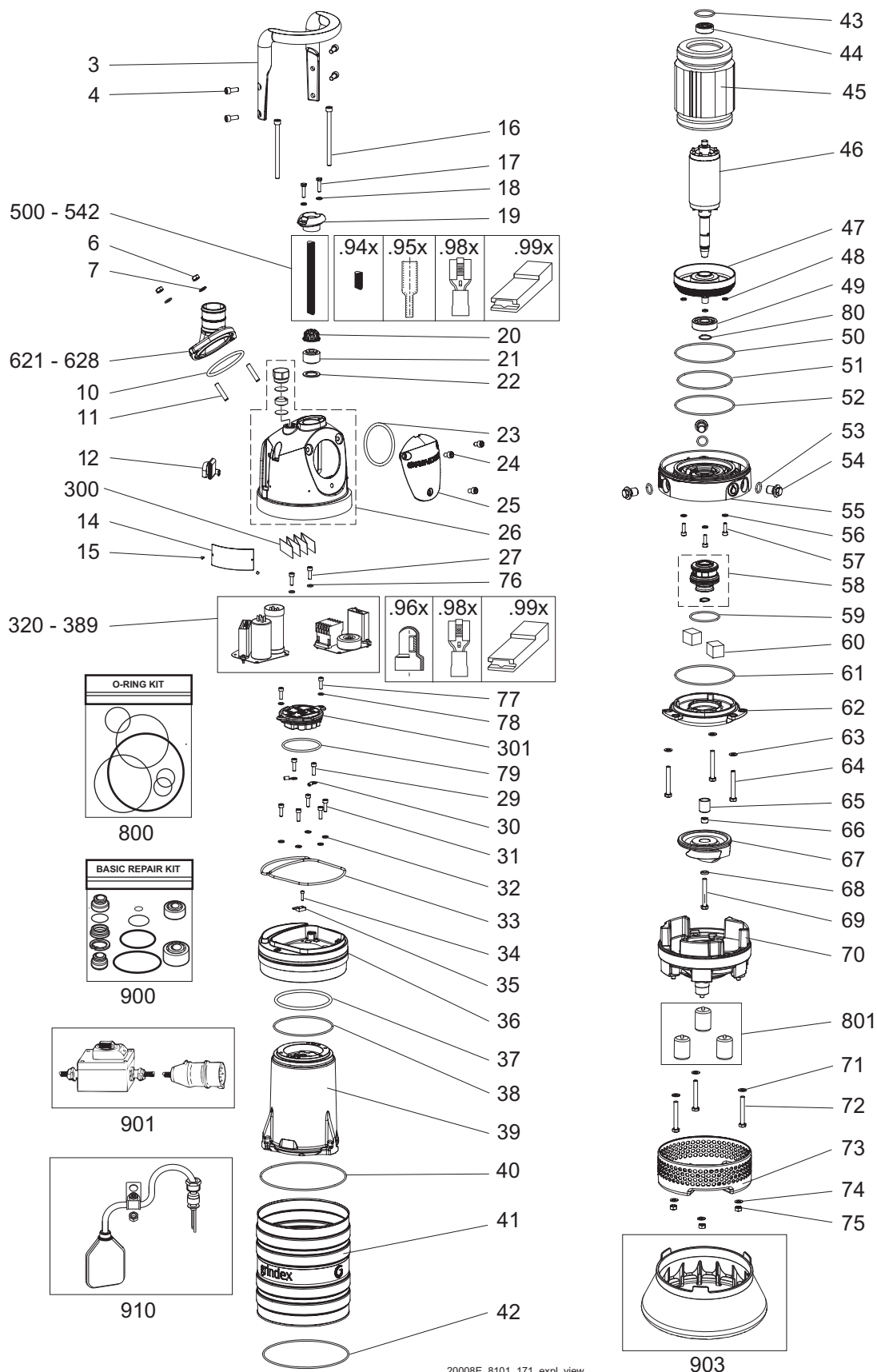


# Parts List

## MINEX 8101.171



www.grindex.com





# Parts List

MINEX 8101.171

## Overview

---

### Table of Contents

This publication contains the following topics:

### Topic

Introduction .....	4
Practical Information .....	5
Data Plate Interpretation.....	6
Order parts.....	7
Spare Parts.....	8

---

# Introduction

## Purpose

The purpose of this manual is to give the reader information about available spare parts and accessories for the product.

---

## Recipient

The manual is principally intended for Grindex

- customers
  - service personnel
  - sales personnel
- 

## Contact

For more information

- contact your Grindex representative
  - visit <http://www.grindex.com/>
- 

## Reference

More information about the product is available in the following documents:

- Installation, Operation and Maintenance
  - Grindex accessories list
-

# Practical Information

## Overview

### Table of Contents

This chapter contains the following topics:

Topic	
Data Plate Interpretation .....	6
Data Plate.....	6
Order parts .....	7

# Data Plate Interpretation

## Introduction

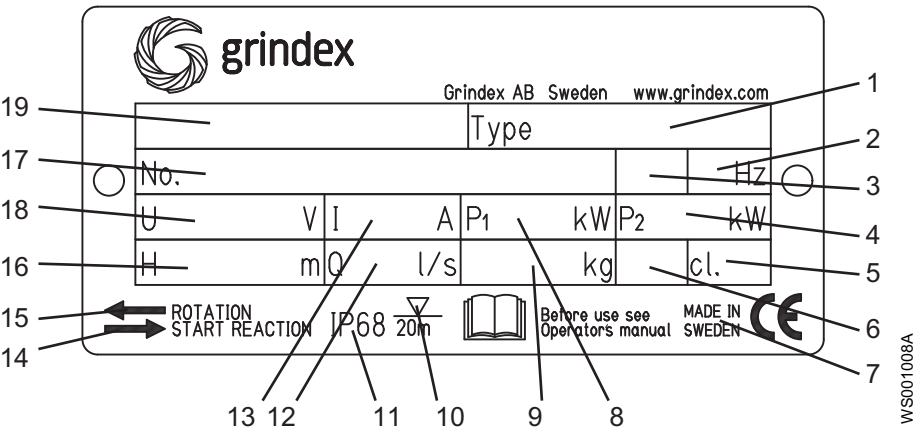
- The Grindex product is always provided with data plates:
- The general data plate is used on all products.
  - The approval plate is added to all explosion proof products.

## Data Plate

The product may only be operated within the parameters stated on the data plate.

## Illustration

This is an illustration of a general data plate.



## Field description

This table shows the fields on the general data plate, and which information each field contains.

Field	Description	Field	Description
1	Pump type number	11	Degree of protection
2	Frequency	12	Maximum capacity
3	Phases, type of current	13	Rated current
4	Rated shaft power	14	Direction of the start reaction
5	Thermal class	15	Direction of the impeller rotation
6	Locked rotor code-letter	16	Maximum head
7	Country of origin	17	Serial number
8	Maximum power consumption	18	Rated voltage
9	Product weight	19	Pump model
10	Maximum submersion depth	-	-

# Order parts

<b>Order</b>	When ordering spare parts, state product number and serial number of the product, spare part number and quantity.
<b>Requirements</b>	Genuine Grindex parts must always be used for repairs if the product is to fulfill requirements and obtain official approval.
<b>Specially Approved Products</b>	Spare parts marked with <sup>(EX)</sup> after the part number are subject to dimensional accuracy inspection.

# Spare Parts

## NOTE!

Parts with position numbers that end with .9xx are NOT included in the unit and must be ordered separately.

Pos. No	Part. No	Denomination	Qty/Version 171
3	50 833 00	Handle compl.	1
4	50 021 33	Hex.socket hd screw M8X20-A4-80	4
6	50 021 37	Hexagon nut M8-A4-70	3
7	50 021 38	Plain washer 8-A4-170	2
10	410 015	O-ring 79,2X5,7-NBR	1
11	410 689	Stud M8X45-A2-70	2
12	50 836 00	Air release valve	1
14	50 888 00	Plate-blank	1
		Use 50 907 00 (EU), 50 907 01 (US) as spare part.	
15	410 000	Drive screw 4X5-A2-70	4
16	50 021 21	Hex.socket hd screw M8X120-A2-70	2
17	410 001	Hexagon head screw M6X25-A4-70	2
18	410 013	Plain washer 6-A4-170	2
19	50 932 00	Entrance flange (10)-20MM	1
19	50 932 01	Entrance flange (22)-26MM	1
20	50 926 00	Cable clip (10)-12 MM	1
20	50 926 01	Cable clip (12)-14 MM	1
20	50 926 02	Cable clip (14)-16 MM	1
20	50 926 04	Cable clip (18)-20 MM	1
20	50 926 05	Cable clip (20)-22 MM	1
20	50 926 06	Cable clip (22)-24 MM	1
20	50 926 07	Cable clip (24)-26 MM	1
21	410 727	Seal sleeve (10)-12 MM	1
21	410 728	Seal sleeve (12)-14 MM	1
21	410 729	Seal sleeve (14)-16 MM	1
21	410 730	Seal sleeve (16)-18 MM	1
21	410 731	Seal sleeve (18)-20 MM	1
21	410 732	Seal sleeve (20)-22 MM	1
21	410 733	Seal sleeve (22)-24 MM	1
21	410 734	Seal sleeve (24)-26 MM	1
22	50 127 00	Plain washer (24)-26 MM	1
22	50 127 04	Plain washer (10)-22 MM	1
23	410 015	O-ring 79,2X5,7-NBR	1



Pos. No	Part. No	Denomination	Qty/Version 171
24	410 010	Hex.socket hd screw M8X12-A2-70	3
25	50 832 00	Cover	1
26	51 153 00	Entrance cover unit	1
26.1	51 399 00	Gland screw	1
26.2	51 153 01	Main cover	1
26.3	51 400 00	Plate	2
26.4	51 401 00	Plug	1
27	50 020 04	Hex.socket hd screw M6X20-A4-70	2
29	50 020 04	Hex.socket hd screw M6X20-A4-70	1
30	410 032	Cable lug INSUL.UL/CSA 1.04-2.6 MM2	2
30	410 177	Cable lug INSUL.UL/CSA 2.62-6.64MM2	1
31	50 020 04	Hex.socket hd screw M6X20-A4-70	5
32	410 013	Plain washer 6-A4-170	5
33	50 925 01	Gasket	1
34	410 008	Hex.socket hd screw M4X16-A2-70	1
35	410 390	Thermal detectors	1
36	51 150 00	Cover	1
37	410 016	O-ring 109.1X5.7 NBR	1
38	50 037 01	O-ring 119.5X3 NBR	1
39	51 147 02	Stator housing	50Hz: 1-phase P1=1,7kW. 60Hz: 1-phase P1=1,8kW.
39	51 152 00	Stator housing	50Hz: 1-phase P1=1,1kW, 3-phase P1=1,6kW. 60Hz: 1-phase P1=1,3kW, 3-phase P1=1,8kW.
40	410 087	O-ring 174.3X5.7 NBR	1
41	50 834 00	Outer casing	50Hz: 1-phase P1=1,7kW. 60Hz: 1-phase P1=1,8kW.
41	51 154 00	Outer casing	50Hz: 1-phase P1=1,1kW, 3-phase P1=1,6kW. 60Hz: 1-phase P1=1,3kW, 3-phase P1=1,8kW.
42	410 022	O-ring 175X3 NBR	1
43	50 037 63	O-ring 36,2X3,0 FPM	1
44	50 287 03	Ball bearing 6301-2Z/C3WT 12X37X12	1
45	50 913 00	Stator 13-10-2b	50Hz: 1-phase P1=1,7kW 220V-240V.

Pos. No	Part. No	Denomination	Qty/Version 171
45	50 913 02	Stator 13-10-2b 60Hz: 1-phase P1=1,8kW 230V.	1
45	50 933 00	Stator 13-06-2b 50Hz: 3-phase P1=1,6kW 380V-415V Y, 220V-230V D.	1
45	50 933 01	Stator 13-06-2b 50Hz: 3-phase P1=1,6kW 500V-550V Y. 60Hz: 3-phase P1=1,8kW 575V-600V Y.	1
45	50 933 02	Stator 13-06-2b 60Hz: 3-phase P1=1,8kW 460V-480V YSER, 230V Y//.	1
45	50 933 03	Stator 13-06-2b 60Hz: 3-phase P1=1,8kW 380V Y, 220V D.	1
45	50 933 07	Stator 13-06-2b 60Hz: 3-phase P1=1,8kW 230V D//, 380V Y//, 460V DSER.	1
45	50 933 08	Stator 13-06-2b 50Hz: 3-phase 400V Y. 60Hz: 3-phase 460V Y. 3-lead stator.	1
45	50 933 09	Stator 13-06-2b 60Hz: 3-phase 575V-600V Y.	1
45	50 934 00	Stator 13-06-2b 60Hz: 1-phase P1=1,3kW 220V-240V.	1
45	50 934 01	Stator 13-06-2b 60Hz: 1-phase P1=1,3kW 115V.	1
45	50 934 02	Stator 13-06-2b 50Hz: 1-phase P1=1,1kW 220V-240V.	1
45	50 934 03	Stator 13-06-2b 50Hz: 1-phase P1=1,1kW 110V.	1
46	50 914 02	Shaft unit 50Hz: 1-phase P1=1,7kW. 60Hz: 1-phase P1=1,8kW.	1
46	50 914 04	Shaft unit 50Hz: 1-phase P1=1,1kW, 3-phase P1=1,6kW. 60Hz: 1-phase P1=1,3kW, 3-phase P1=1,8kW.	1
47	50 988 06	Bearing housing	1
48	50 983 00	Gasket NBR	3
49	50 287 04	Ball bearing 6304-2Z/C3WT 20X52X15	1
50	50 037 01	O-ring 119.5X3 NBR	1
51	50 037 04	O-ring 109.5X3 NBR	1
52	50 037 01	O-ring 119.5X3 NBR	1
53	133 064	O-ring 19.2X3 NBR	3
54	133 063	Inspection screw	3
55	50 989 00	Intermediate piece	1
56	410 013	Plain washer 6-A4-170	3
57	50 020 04	Hex.socket hd screw M6X20-A4-70	3
58	50 901 23	Mechanical seal	1
59	410 083	O-ring 57.5X3.0 FPM	1

Pos. No	Part. No	Denomination	Qty/Version 171
60	410 040	Pressure equalizer	2
61	410 017	O-ring 124,5X3,0-NBR	1
62	50 928 00	Seal housing cov.coa	1
63	50 021 38	Plain washer 8-A4-170	3
64	410 006	Hexagon head screw M8X60-A4-80	3
65	50 930 00	Clamping sleeve	1
66	50 931 00	Adjustment screw	1
67	50 942 00	Impeller	50Hz: 1-phase P1=1,7kW 230V, 3-phase P1=1,6kW. 1
67	50 942 01	Impeller	50Hz: 1-phase P1=1,1kW 110V & 230V. 60Hz: 3-phase P1=1,8kW. 1
67	50 942 02	Impeller	60Hz: 1-phase P1=1,3kW 115V. 1
67	50 942 03	Impeller	60Hz: 1-phase P1=1,8kW 230V. 1
68	410 014	Plain washer A2-170HV M8	1
69	410 006	Hexagon head screw M8X60-A4-80	1
70	50 943 00	Diffuser part	1
70	50 943 01	Diffuser part	Prepared for zinc anode. 1
71	50 021 38	Plain washer 8-A4-170	3
72	410 006	Hexagon head screw M8X60-A4-80	3
73	50 929 00	Strainer compl.	1
74	50 021 38	Plain washer 8-A4-170	3
75	50 021 37	Hexagon nut M8-A4-70	2
76	410 013	Plain washer 6-A4-170	2
77	410 503	Hex.socket hd screw M6X12-A2-70	2
79	50 037 58	O-ring 74,5X3,0 NBR	1
80	50 278 02	Retaining ring SGA 20	1
300	51 623 00	Connection plate	1
301	51 641 00	Terminal plate unit	1
320	50 891 39	STARTER UNIT	Contactor unit, 50Hz: 380V - 415V Y. 1
320.1	410 008	Hex.socket hd screw M4X16-A2-70	4
320.2	410 012	Lock nut	4
320.3	410 109	Contactor	1
320.4	50 900 62	Single-core cable	1
320.5	50 883 00	Mounting plate	1

Pos. No	Part. No	Denomination	Qty/Version
			171
320.6	50 509 00	Cable set	1
320.7	51 511 05	Motor protector SMART	1
320.946	51 639 00	Cable set	Ordered separately. 1
320.961	410 034	Closed end splice 3-6(AWG 12-10) L=18	Ordered separately. 1
320.983	410 742	Flat pin sleeve 0,5-1,65MM2	Ordered separately. 1
322	50 891 33	STARTER UNIT	Contactor unit, 50Hz: 500V Y. 1
322.1	410 008	Hex.socket hd screw M4X16-A2-70	4
322.2	410 012	Lock nut	4
322.3	410 110	Contactor	1
322.4	50 900 62	Single-core cable	1
322.5	50 883 00	Mounting plate	1
322.6	50 509 00	Cable set	1
322.7	51 511 05	Motor protector SMART	1
322.946	51 639 00	Cable set	Ordered separately. 1
322.961	410 034	Closed end splice 3-6(AWG 12-10) L=18	Ordered separately. 1
322.983	410 742	Flat pin sleeve 0,5-1,65MM2	Ordered separately. 1
331	50 891 38	STARTER UNIT	Contactor unit, 60Hz: 230V Y//. 1
331.1	410 008	Hex.socket hd screw M4X16-A2-70	4
331.2	410 012	Lock nut	4
331.3	410 108	Contactor	1
331.4	50 900 62	Single-core cable	1
331.5	50 883 00	Mounting plate	1
331.6	50 509 00	Cable set	1
331.7	51 511 08	Motor protector SMART	1
331.946	51 639 00	Cable set	Ordered separately. 1
331.961	410 034	Closed end splice 3-6(AWG 12-10) L=18	Ordered separately. 1
331.983	410 742	Flat pin sleeve 0,5-1,65MM2	Ordered separately. 1
335	50 891 35	STARTER UNIT	Contactor unit, 60Hz: 380V Y. 1
335.1	410 008	Hex.socket hd screw M4X16-A2-70	2
335.2	410 012	Lock nut	2
335.3	410 109	Contactor	1
335.4	50 900 62	Single-core cable	1
335.5	50 883 00	Mounting plate	1
335.6	50 509 00	Cable set	1
335.7	51 511 06	Motor protector SMART	1
335.946	51 639 00	Cable set	Ordered separately. 1

Pos. No	Part. No	Denomination	Qty/Version
			171
335.961	410 034	Closed end splice 3-6(AWG 12-10) L=18	Ordered separately. 1
335.983	410 742	Flat pin sleeve 0,5-1,65MM2	Ordered separately. 1
338	50 891 37	STARTER UNIT	Contacteur unit, 60Hz: 575V - 600V Y. 1
338.1	410 008	Hex.socket hd screw M4X16-A2-70	4
338.2	410 012	Lock nut	4
338.5	50 900 62	Single-core cable	1
338.6	50 883 00	Mounting plate	1
338.7	50 509 00	Cable set	1
338.8	51 511 06	Motor protector SMART	1
338.946	51 639 00	Cable set	Ordered separately. 1
338.961	410 034	Closed end splice 3-6(AWG 12-10) L=18	Ordered separately. 1
338.983	410 742	Flat pin sleeve 0,5-1,65MM2	Ordered separately. 2
339	50 891 36	STARTER UNIT	Contacteur unit, 60Hz: 460V - 480V YSER. 1
339.1	410 008	Hex.socket hd screw M4X16-A2-70	4
339.2	410 012	Lock nut	4
339.3	410 163	Contacteur	1
339.4	50 900 62	Single-core cable	1
339.5	50 883 00	Mounting plate	1
339.6	50 509 00	Cable set	1
339.7	51 511 06	Motor protector SMART	1
339.946	51 639 00	Cable set	Ordered separately. 1
339.961	410 034	Closed end splice 3-6(AWG 12-10) L=18	Ordered separately. 4
339.983	410 742	Flat pin sleeve 0,5-1,65MM2	Ordered separately. 2
343	50 891 46	STARTER UNIT	Contacteur unit, 50Hz: 220V - 230V D. 1
343.1	410 008	Hex.socket hd screw M4X16-A2-70	4
343.2	410 012	Lock nut	4
343.3	410 108	Contacteur	1
343.4	50 900 62	Single-core cable	1
343.5	50 883 00	Mounting plate	1
343.6	50 509 00	Cable set	1
343.7	51 511 07	Motor protector SMART	1
343.946	51 639 00	Cable set	Ordered separately. 1
343.983	410 742	Flat pin sleeve 0,5-1,65MM2	Ordered separately. 1

Pos. No	Part. No	Denomination	Qty/Version
			171
344	50 891 38	STARTER UNIT Contactor unit, 60Hz: 220V - 230V D.	1
344.1	410 008	Hex.socket hd screw M4X16-A2-70	4
344.2	410 012	Lock nut	4
344.3	410 108	Contactor	1
344.4	50 900 62	Single-core cable	1
344.5	50 883 00	Mounting plate	1
344.6	50 509 00	Cable set	1
344.7	51 511 08	Motor protector SMART	1
344.946	51 639 00	Cable set Ordered separately.	1
344.983	410 742	Flat pin sleeve 0,5-1,65MM2 Ordered separately.	1
350	50 891 46	STARTER UNIT Contactor unit, 50Hz: 220V - 230V D, for float switch.	1
350.1	410 008	Hex.socket hd screw M4X16-A2-70	4
350.2	410 012	Lock nut	4
350.3	410 108	Contactor	1
350.4	50 900 62	Single-core cable	1
350.5	50 883 00	Mounting plate	1
350.6	50 509 00	Cable set	1
350.7	51 511 07	Motor protector SMART	1
350.946	51 639 00	Cable set Ordered separately.	1
350.961	410 034	Closed end splice 3-6(AWG 12-10) L=18 Ordered separately.	1
350.968	410 077	Cable clamp Ordered separately.	1
350.976	51 278 00	Bending protection Ordered separately.	1
350.982	410 759	Flat pin sleeve 1.0-2.6MM2 Ordered separately.	1
350.995	410 370	Plain washer Ordered separately.	1
351	50 891 39	STARTER UNIT Contactor unit, 50Hz: 400V Y, for float switch.	1
351.1	410 008	Hex.socket hd screw M4X16-A2-70	4
351.2	410 012	Lock nut	4
351.3	410 109	Contactor	1
351.4	50 900 62	Single-core cable	1
351.5	50 883 00	Mounting plate	1
351.6	50 509 00	Cable set	1
351.7	51 511 05	Motor protector SMART	1
351.946	51 639 00	Cable set Ordered separately.	1
351.961	410 034	Closed end splice 3-6(AWG 12-10) L=18 Ordered separately.	1

Pos. No	Part. No	Denomination	Qty/Version
			171
351.968	410 077	Cable clamp	Ordered separately. 1
351.976	51 278 00	Bending protection	Ordered separately. 1
351.982	410 759	Flat pin sleeve 1.0-2.6MM2	Ordered separately. 1
351.995	410 370	Plain washer	Ordered separately. 1
371	50 891 13	STARTER UNIT	Capacitor unit, 50Hz: 110V, for float switch. P1=1,1kW. 1
371.1	410 008	Hex.socket hd screw M4X16-A2-70	2
371.3	410 012	Lock nut	2
371.4	50 021 36	Lock nut M8-A4-70	2
371.5	410 137	Capacitor 320MF 220/275V	1
371.6	410 138	Capacitor 80 MFD 275V	1
371.7	50 883 00	Mounting plate	1
371.8	50 906 03	Start relay SNT	1
371.9	51 004 00	Cable set	1
371.949	51 640 00	Cable set	Ordered separately. 1
371.961	410 034	Closed end splice 3-6(AWG 12-10) L=18	Ordered separately. 1
371.968	410 077	Cable clamp	Ordered separately. 1
371.983	410 742	Flat pin sleeve 0,5-1,65MM2	Ordered separately. 1
372	50 891 15	STARTER UNIT	Capacitor unit, 50Hz: 220V - 240V, for float switch. P1=1,7kW. 1
372.1	410 008	Hex.socket hd screw M4X16-A2-70	2
372.3	410 012	Lock nut	2
372.4	50 021 36	Lock nut M8-A4-70	2
372.5	410 089	Capacitor 100MF 360/450 V	1
372.6	410 140	Capacitor 35 MF 420V	1
372.7	50 883 00	Mounting plate	1
372.8	50 906 02	Start relay SNT	1
372.9	51 004 00	Cable set	1
372.949	51 640 00	Cable set	Ordered separately. 1
372.961	410 034	Closed end splice 3-6(AWG 12-10) L=18	Ordered separately. 2
372.968	410 077	Cable clamp	Ordered separately. 1
372.983	410 742	Flat pin sleeve 0,5-1,65MM2	Ordered separately. 1
373	50 891 15	STARTER UNIT	Capacitor unit, 50Hz: 220V - 240V. P1=1,7kW. 1
373.1	410 008	Hex.socket hd screw M4X16-A2-70	2
373.3	410 012	Lock nut	2
373.4	50 021 36	Lock nut M8-A4-70	2

Pos. No	Part. No	Denomination	Qty/Version 171
373.5	410 089	Capacitor 100MF 360/450 V	1
373.6	410 140	Capacitor 35 MF 420V	1
373.7	50 883 00	Mounting plate	1
373.8	50 906 02	Start relay SNT	1
373.9	51 004 00	Cable set	1
373.949	51 640 00	Cable set Ordered separately.	1
373.983	410 742	Flat pin sleeve 0,5-1,65MM2 Ordered separately.	1
379	50 891 13	STARTER UNIT Capacitor unit, 50Hz: 110V. P1=1,1kW.	1
379.1	410 008	Hex.socket hd screw M4X16-A2-70	2
379.3	410 012	Lock nut	2
379.4	50 021 36	Lock nut M8-A4-70	2
379.5	410 137	Capacitor 320MF 220/275V	1
379.6	410 138	Capacitor 80 MFD 275V	1
379.7	50 883 00	Mounting plate	1
379.8	50 906 03	Start relay SNT	1
379.9	51 004 00	Cable set	1
379.949	51 640 00	Cable set Ordered separately.	1
379.983	410 742	Flat pin sleeve 0,5-1,65MM2 Ordered separately.	1
381	50 891 14	STARTER UNIT Capacitor unit, 50Hz: 220V - 240V. 60Hz: 220V - 240V. P1=1,1kW.	1
381.1	410 008	Hex.socket hd screw M4X16-A2-70	2
381.3	410 012	Lock nut	2
381.4	50 021 36	Lock nut M8-A4-70	2
381.5	410 377	Capacitor 80MF 360/450V	1
381.6	410 376	Capacitor 20MF 400V	1
381.7	50 883 00	Mounting plate	1
381.8	50 906 02	Start relay SNT	1
381.9	51 004 00	Cable set	1
381.949	51 640 00	Cable set Ordered separately.	1
381.983	410 742	Flat pin sleeve 0,5-1,65MM2 Ordered separately.	1
382	50 891 16	STARTER UNIT Capacitor unit, 60Hz: 220V - 240V, for float switch.	1
382.1	410 008	Hex.socket hd screw M4X16-A2-70	2
382.3	410 012	Lock nut	2
382.4	50 021 36	Lock nut M8-A4-70	2
382.5	410 089	Capacitor 100MF 360/450 V	1
382.6	410 141	Capacitor 30 MF 420V	1



Pos. No	Part. No	Denomination	Qty/Version
			171
382.7	50 883 00	Mounting plate	1
382.8	50 906 02	Start relay SNT	1
382.9	51 004 00	Cable set	1
382.949	51 640 00	Cable set	Ordered separately. 1
382.961	410 034	Closed end splice 3-6(AWG 12-10) L=18	Ordered separately. 3
382.968	410 077	Cable clamp	Ordered separately. 1
382.983	410 742	Flat pin sleeve 0,5-1,65MM2	Ordered separately. 1
383	50 891 14	STARTER UNIT	Capacitor unit, 50Hz: 220V - 240V, for float switch. P1=1,1kW. 1
383.1	410 008	Hex.socket hd screw M4X16-A2-70	2
383.3	410 012	Lock nut	2
383.4	50 021 36	Lock nut M8-A4-70	2
383.5	410 377	Capacitor 80MF 360/450V	1
383.6	410 376	Capacitor 20MF 400V	1
383.7	50 883 00	Mounting plate	1
383.8	50 906 02	Start relay SNT	1
383.9	51 004 00	Cable set	1
383.949	51 640 00	Cable set	Ordered separately. 1
383.961	410 034	Closed end splice 3-6(AWG 12-10) L=18	Ordered separately. 1
383.968	410 077	Cable clamp	Ordered separately. 1
383.983	410 742	Flat pin sleeve 0,5-1,65MM2	Ordered separately. 4
386	50 891 13	STARTER UNIT	Capacitor unit, 60Hz: 115V. P1=1,3kW. 1
386.1	410 008	Hex.socket hd screw M4X16-A2-70	2
386.3	410 012	Lock nut	2
386.4	50 021 36	Lock nut M8-A4-70	2
386.5	410 137	Capacitor 320MF 220/275V	1
386.6	410 138	Capacitor 80 MFD 275V	1
386.7	50 883 00	Mounting plate	1
386.8	50 906 03	Start relay SNT	1
386.9	51 004 00	Cable set	1
386.949	51 640 00	Cable set	Ordered separately. 1
386.961	410 034	Closed end splice 3-6(AWG 12-10) L=18	Ordered separately. 1
386.983	410 742	Flat pin sleeve 0,5-1,65MM2	Ordered separately. 1
387	50 891 13	STARTER UNIT	Capacitor unit, 60Hz: 115V, for float switch. P1=1,3kW. 1

Pos. No	Part. No	Denomination	Qty/Version 171
387.1	410 008	Hex.socket hd screw M4X16-A2-70	2
387.3	410 012	Lock nut	2
387.4	50 021 36	Lock nut M8-A4-70	2
387.5	410 137	Capacitor 320MF 220/275V	1
387.6	410 138	Capacitor 80 MFD 275V	1
387.7	50 883 00	Mounting plate	1
387.8	50 906 03	Start relay SNT	1
387.9	51 004 00	Cable set	1
387.949	51 640 00	Cable set Ordered separately.	1
387.968	410 077	Cable clamp Ordered separately.	1
387.983	410 742	Flat pin sleeve 0,5-1,65MM2 Ordered separately.	1
388	50 891 14	STARTER UNIT Capacitor unit, 60Hz: 220V - 240V, for float switch. P1=1,3kW.	1
388.1	410 008	Hex.socket hd screw M4X16-A2-70	2
388.3	410 012	Lock nut	2
388.4	50 021 36	Lock nut M8-A4-70	2
388.5	410 377	Capacitor 80MF 360/450V	1
388.6	410 376	Capacitor 20MF 400V	1
388.7	50 883 00	Mounting plate	1
388.8	50 906 02	Start relay SNT	1
388.9	51 004 00	Cable set	1
388.949	51 640 00	Cable set Ordered separately.	1
388.961	410 034	Closed end splice 3-6(AWG 12-10) L=18 Ordered separately.	1
388.968	410 077	Cable clamp Ordered separately.	1
388.983	410 742	Flat pin sleeve 0,5-1,65MM2 Ordered separately.	1
389	50 891 16	STARTER UNIT Capacitor unit, 60Hz: 220V - 230V. P1=1,6kW.	1
389.1	410 008	Hex.socket hd screw M4X16-A2-70	2
389.3	410 012	Lock nut	2
389.4	50 021 36	Lock nut M8-A4-70	2
389.5	410 089	Capacitor 100MF 360/450 V	1
389.6	410 141	Capacitor 30 MF 420V	1
389.7	50 883 00	Mounting plate	1
389.8	50 906 02	Start relay SNT	1
389.9	51 004 00	Cable set	1
389.949	51 640 00	Cable set Ordered separately.	1
389.983	410 742	Flat pin sleeve 0,5-1,65MM2 Ordered separately.	1

Pos. No	Part. No	Denomination	Qty/Version
			171
392	50 891 47	STARTER UNIT Contactor unit, 50Hz: 380V - 415V Y, for float switch.	1
392.1	410 008	Hex.socket hd screw M4X16-A2-70	6
392.2	410 012	Lock nut	6
392.3	410 772	Transformer 24V	1
392.4	410 771	Contactor	1
392.5	50 883 00	Mounting plate	1
392.6	50 509 00	Cable set	2
392.7	51 511 05	Motor protector SMART	1
392.946	51 639 00	Cable set Ordered separately.	1
392.961	410 034	Closed end splice 3-6(AWG 12-10) L=18 Ordered separately.	2
392.968	410 077	Cable clamp Ordered separately.	1
392.976	51 278 00	Bending protection Ordered separately.	1
392.982	410 759	Flat pin sleeve 1.0-2.6MM2 Ordered separately.	1
392.995	410 370	Plain washer Ordered separately.	1
393	50 891 49	STARTER UNIT Contactor unit, 50Hz: 500V - 550V Y, for float switch.	1
393.1	410 008	Hex.socket hd screw M4X16-A2-70	6
393.2	410 012	Lock nut	6
393.3	410 773	Transformer 24V	1
393.4	410 771	Contactor	1
393.5	50 883 00	Mounting plate	1
393.6	50 509 00	Cable set	2
393.7	51 511 05	Motor protector SMART	1
393.946	51 639 00	Cable set Ordered separately.	1
393.961	410 034	Closed end splice 3-6(AWG 12-10) L=18 Ordered separately.	2
393.968	410 077	Cable clamp Ordered separately.	1
393.976	51 278 00	Bending protection Ordered separately.	1
393.982	410 759	Flat pin sleeve 1.0-2.6MM2 Ordered separately.	1
393.995	410 370	Plain washer Ordered separately.	1
395	50 891 48	STARTER UNIT Contactor unit, 60Hz: 460V - 480V YSER, for float switch.	1
395.1	410 008	Hex.socket hd screw M4X16-A2-70	6
395.2	410 012	Lock nut	6
395.3	410 772	Transformer 24V	1
395.4	410 771	Contactor	1
395.5	50 883 00	Mounting plate	1

Pos. No	Part. No	Denomination	Qty/Version 171
395.6	50 509 00	Cable set	2
395.7	51 511 06	Motor protector SMART	1
395.946	51 639 00	Cable set Ordered separately.	1
395.961	410 034	Closed end splice 3-6(AWG 12-10) L=18 Ordered separately.	2
395.968	410 077	Cable clamp Ordered separately.	1
395.976	51 278 00	Bending protection Ordered separately.	1
395.982	410 759	Flat pin sleeve 1.0-2.6MM2 Ordered separately.	1
395.995	410 370	Plain washer Ordered separately.	1
396	50 891 50	STARTER UNIT Contactor unit, 60Hz: 575V - 600V Y, for float switch.	1
396.1	410 008	Hex.socket hd screw M4X16-A2-70	6
396.2	410 012	Lock nut	6
396.3	410 773	Transformer 24V	1
396.4	410 771	Contactor	1
396.5	50 883 00	Mounting plate	1
396.6	50 509 00	Cable set	2
396.7	51 511 06	Motor protector SMART	1
396.946	51 639 00	Cable set Ordered separately.	1
396.961	410 034	Closed end splice 3-6(AWG 12-10) L=18 Ordered separately.	2
396.968	410 077	Cable clamp Ordered separately.	1
396.976	51 278 00	Bending protection Ordered separately.	1
396.982	410 759	Flat pin sleeve 1.0-2.6MM2 Ordered separately.	1
396.995	410 370	Plain washer Ordered separately.	1
500	410 039	Cable with plug 3G1.5 MM2 OD=10-11MM L=20	1
500.940	410 056	Insulating hose (10-16MM) Ordered separately.	*
500.983	410 742	Flat pin sleeve 0,5-1,65MM2 Ordered separately.	2
501	131 042	Motor cable 3G1.5 MM2 OD=10-11 MM	*
501.940	410 056	Insulating hose (10-16MM) Ordered separately.	*
501.983	410 742	Flat pin sleeve 0,5-1,65MM2 Ordered separately.	2
502	131 040	Motor cable 4G1.5 MM2 OD=10.5-11.5 MM	*
502.940	410 056	Insulating hose (10-16MM) Ordered separately.	*
503	410 062	Motor cable 4G1.5+2X1.5 OD=15.5-16.5	*
503.940	410 056	Insulating hose (10-16MM) Ordered separately.	*
504	131 039	Motor cable 4G2.5 MM2 OD=12.5-13.5 MM	*
504.940	410 056	Insulating hose (10-16MM) Ordered separately.	*

Pos. No	Part. No	Denomination	Qty/Version
			171
519	410 402	Motor cable 3G2.5 MM2 OD=11-12 MM	*
519.940	410 056	Insulating hose (10-16MM)	Ordered separately. *
519.982	410 759	Flat pin sleeve 1.0-2.6MM2	Ordered separately. 2
522	410 064	Motor cable 14AWG/3 OD=13.2-14.2 MM	*
522.940	410 056	Insulating hose (10-16MM)	Ordered separately. *
522.982	410 759	Flat pin sleeve 1.0-2.6MM2	Ordered separately. 2
523	410 065	Motor cable 14AWG/4 OD=14.2-15.2 MM	*
523.940	410 056	Insulating hose (10-16MM)	Ordered separately. *
532	410 066	Motor cable 14AWG/7 OD=18-20 MM	*
532.941	132 354	Insulating hose (18-22MM)	Ordered separately. *
538	410 058	Motor cable SCREEN 3X1.5MM2 13.5-14.9	*
538.940	410 056	Insulating hose (10-16MM)	Ordered separately. *
538.950	410 055	Shrink hose	Ordered separately. *
542	410 061	Motor cable SCREEN 3X2.5+3X2.5 19-20	*
542.941	132 354	Insulating hose (18-22MM)	Ordered separately. *
621	51 149 00	Discharge connection DN 50 HOSE 2"	1
622	51 149 01	Discharge connection DN 50 ISO-G 2A OUTER	1
623	51 149 01	Discharge connection DN 50 ISO-G 2A OUTER	1
623.970	410 027	Coupling part DN 52 INNER G2B STORZ	Ordered separately. 1
628	51 149 02	Discharge connection DN 50 2"-11.5 NPT OUTER	1
800	51 166 00	O-ring kit	Contains all position numbered O-rings. 1
801	51 077 00	Anode KIT	1
900	51 181 00	Basic repair kit	1
900.1	50 287 03	Ball bearing 6301-2Z/C3WT 12X37X12	1
900.2	50 287 04	Ball bearing 6304-2Z/C3WT 20X52X15	1
900.3	410 040	Pressure equalizer	2
900.4	50 901 23	Mechanical seal	1
900.5	51 166 00	O-ring kit	Contains all position numbered O-rings. 1
901	410 035	Plug contact 250V 1PH 10A T12 SEV1011	1

Pos. No	Part. No	Denomination	Qty/Version 171
901	410 036	Plug contact 100-130V/16A 2P+GND K9000	1
901	410 037	Plug contact 125V/15A,60HZ	1
901	410 038	Plug contact 250V 1PH 15A NEMA 6-15	1
901	410 042	Plug contact 230V 1PH 16A CEE 3P	1
901	410 684	Plug contact CEE/16A/4- POL/380-415V	1
901	50 100 00	Plug contact 380-415 V 3 PH 16A CEE 5P	1
901	50 102 00	Phase shifter 220-575V 0-16A	1
903	50 653 00	Low-suction cuff	1
910	51 155 00	Float switch kit MAX 400V	1
910	51 155 01	Float switch kit CE, MAX 250V, 24V	1
910	51 155 02	Float switch kit CSA, MAX 250V, 24V	1

\* Quantity per meter





Grindex AB • Box 7025 • SE-174 07 Sundbyberg • Sweden • Tel +46 8 606 66 00 • Fax +46 8 745 53 28 • [marketing@grindex.com](mailto:marketing@grindex.com)

© Grindex AB. The original instruction is in English. All non-English instructions are translations of the original instruction.