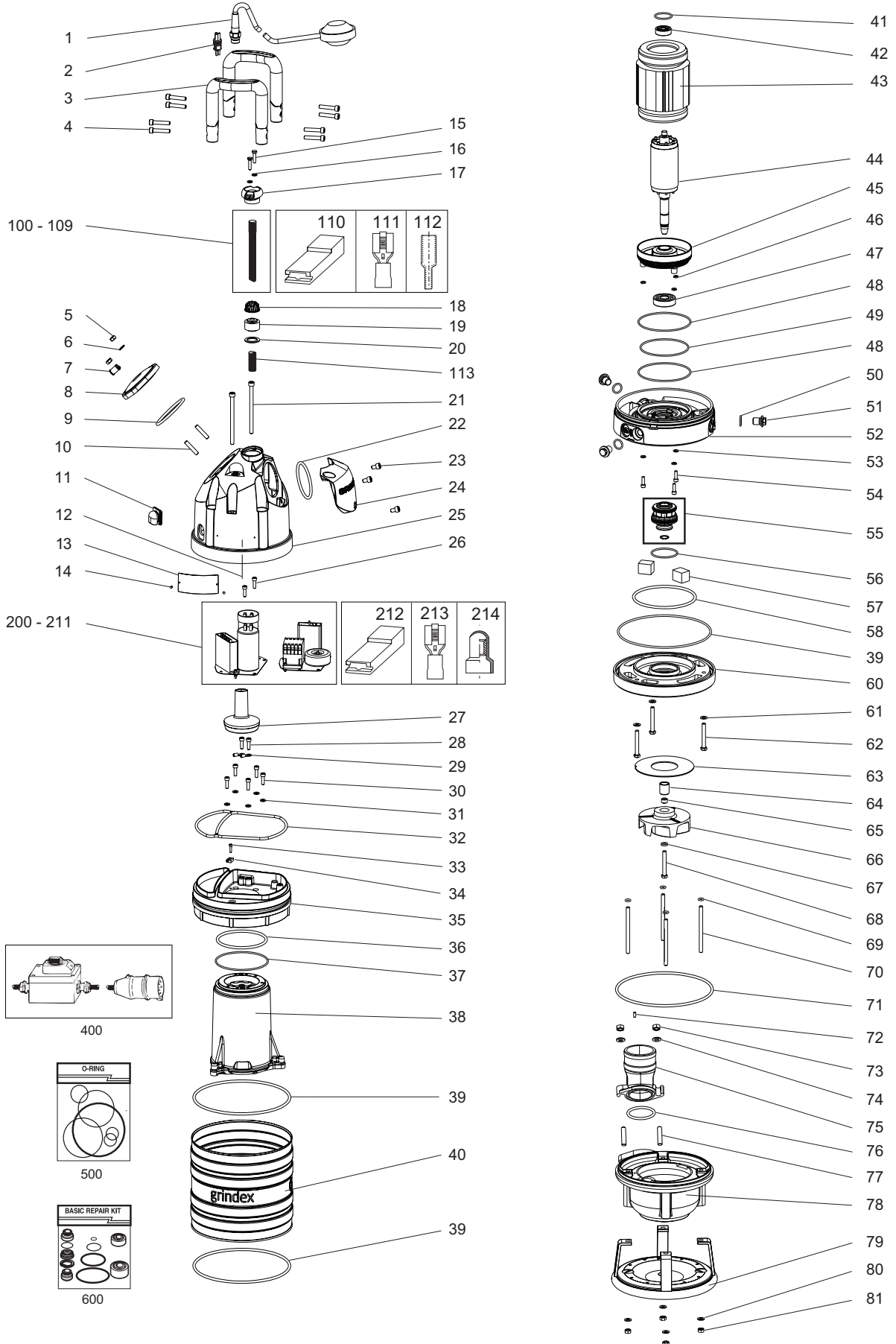


Ersatzteilliste - Liste des pièces de rechange - Reservdelista
Parts List



www.grindex.com

SALVADOR - 8109.281



Parts List

Salvador — 8109.281

Overview

Table of Contents

This publication contains the following topics:

Topic

Preface	4
Practical Information	5
Data Plate Interpretation.....	6
Order parts	7
Spare Parts	8

Preface

Purpose

The purpose of this manual is to give the reader information about available spare parts and accessories for the product.

Recipient

The manual is principally intended for Grindex

- customers
 - service personnel *and*
 - sales personnel.
-

Contact

Please contact Grindex if any information in this publication is

- incorrect
 - missing
 - difficult to find *or*
 - irrelevant.
-

Reference

More information about the product is available in the following documents:

- Installation, Operation and Maintenance
 - Accessories. Please see Grindex Accessories list.
-

Practical Information

Overview

Table of Contents

This chapter contains the following topics:

Topic

Data Plate Interpretation	6
Data Plate	6
Order parts	7

Data Plate Interpretation

Introduction

The Grindex product is always provided with data plates:

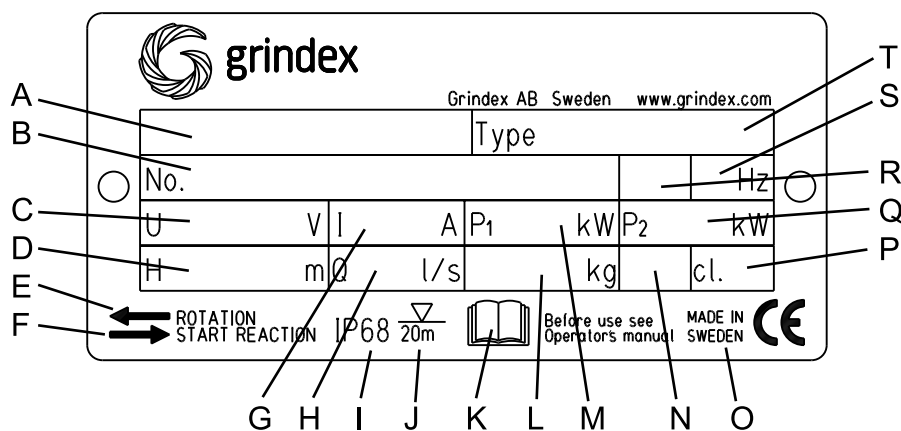
- The general data plate is used on all products.
- The approval plate is added to all explosion proof products.

Data Plate

The product may only be operated within the parameters stated on the data plate.

Illustration

This is an illustration of a general data plate.



Field description

This table shows the fields on the general data plate, and which information each field contains.

Field	Description	Field	Description
A	Pump model	K	Read the Installation, Operation and Maintenance Manual
B	Serial number	L	Product weight
C	Rated voltage	M	Maximum Power consumption
D	Maximum height	N	Locked rotor code letter
E	Direction of Impeller rotation	O	Country of origin
F	Direction of starting jerk	P	Thermal class
G	Rated current	Q	Rated shaft power
H	Maximum capacity	R	Phase; type of current
I	Degree of protection	S	Frequency
J	Maximum submersion depth	T	Pump type number

Order parts

Order

When ordering spare parts, state product number and serial number of the product, spare part number and quantity.

Requirements

Genuine Grindex parts must always be used for repairs if the product is to fulfill requirements and obtain official approval.

Spare Parts

Pos. No	Part. No	Denomination	Qty/Version
			281
1	50 937 00	Level regulator unit CSA & UL 60HZ (OPTIONAL)	1
1	50 937 01	Level regulator unit EU 50HZ (OPTIONAL)	1
2	50 936 00	Plug contact (OPTIONAL)	1
3	50 873 00	Handle compl.	2
4	50 021 29	Hex.socket hd screw M8X40-A4-70	8
5	50 021 37	Hexagon nut M8-A4-70	2
6	50 021 38	Plain washer A4-A 140	2
7	410 077	Cable clamp (OPTIONAL)	1
8	50 884 00	Cover	1
9	410 015	O-ring 79,2X5,7-NBR	1
10	410 078	Stud M8X30-A2-70	2
11	50 836 00	Air release valve	1
12	50 892 00	Connection plate Contactor unit 3-phase 50Hz: 220-230V D, 380-415V Y, 500V Y, 550V Y. 60Hz: 380V Y, 230V Y//, 575V - 600V Y, 460V - 480V YSER.	1
12	50 892 04	Connection plate Capacitor unit 1-phase 60Hz: 220-240V.	1
12	50 899 00	Connection plate Terminal board 3-phase Y, D, YSER, Y//	1
12	50 918 00	Connection plate Screened 3x1,5mm ² FGB, Subcab S3x2,5mm ² +3x2,5mm ² /3+4x1,5mm ² .	1
12	50 981 00	Connection plate Terminal board 1-phase.	1
12	50 982 00	Connection plate Contactor unit 3-phase 50Hz: 220-230V D, 380-415V Y, 500V Y, 550V Y. 60Hz: 380V Y, 575V - 600V Y.	1
12	50 982 01	Connection plate Contactor unit 3-phase 60Hz: 230V Y//, 460-480V YSER.	1
12	50 984 00	Connection plate Terminal board 3-phase Y, D.	1
12	50 985 00	Connection plate Terminal board 3-phase YSER, Y//.	1
13	50 907 00	Data plate	1
14	410 000	Drive screw 4X5-A2-70	4
15	410 001	Hexagon head screw M6X25-A4-70	2
16	410 013	Plain washer A4-A 140	2
17	50 932 00	Entrance flange (10)-20MM	1
17	50 932 01	Entrance flange (22)-26MM	1
18	50 926 00	Cable clip (10)-12MM	1
18	50 926 01	Cable clip (12)-14MM	1
18	50 926 02	Cable clip (14)-16MM	1
18	50 926 04	Cable clip (18)-20MM	1

Pos. No	Part. No	Denomination	Qty/Version
			281
18	50 926 05	Cable clip (18)-22MM	1
18	50 926 06	Cable clip (22)-26MM	1
18	50 926 07	Cable clip (22)-26MM	1
19	410 043	Seal sleeve (10)-12MM	1
19	410 044	Seal sleeve (12)-14MM	1
19	410 045	Seal sleeve (14)-16MM	1
19	410 047	Seal sleeve (18)-20MM	1
19	410 048	Seal sleeve (20)-22MM	1
19	410 049	Seal sleeve (22)-24MM	1
19	410 050	Seal sleeve (24)-26MM	1
20	50 127 00	Plain washer (24)-26MM	1
20	50 127 04	Plain washer (10)-22MM	1
21	50 021 21	Hex.socket hd screw M8X120-A2-70	2
22	132 355	O-ring 89,1X5,7 NBR	1
23	410 010	Hex.socket hd screw M8X12-A2-70	3
24	50 871 00	Cover	1
25	51 167 00	Main cover	1
25	51 167 01	Main cover	1
		Prepared for float switch.	
26	50 020 04	Hex.socket hd screw M6X20-A4-70	2
27	50 835 00	Protective casing	1
28	50 020 04	Hex.socket hd screw M6X20-A4-70	1
29	410 032	Cable lug INSUL.UL/CSA 1.04-2.6MM ²	2
30	50 020 04	Hex.socket hd screw M6X20-A4-70	5
31	410 013	Plain washer A4-A 140	5
32	50 938 01	Gasket	1
33	410 008	Hex.socket hd screw M4X16-A2-70	1
34	410 390	Thermal detectors	1
35	51 151 00	Cover	1
36	410 016	O-ring 109,1X5,7 NBR	1
38	51 147 00	Stator housing	1
39	132 422	O-ring 219.3X5.7 NBR	3
40	50 874 00	Cooling jacket	1
41	50 037 63	O-ring 36,2X3,0 FPM	1
42	50 287 03	Ball bearing 6301-2Z/C3WT 12X37X12	1
43	50 912 00	Stator 13-10-2b	1
		3-phase 50Hz: 220-230V D, 380-415V Y.	
43	50 912 01	Stator 13-10-2b	1
		3-phase 50Hz: 500-550V Y. 60Hz: 575-600V Y.	

Pos. No	Part. No	Denomination	Qty/Version
			281
43	50 912 02	Stator 13-10-2b	3-phase 60Hz: 230V Y//, 460-480V YSER.
43	50 912 03	Stator 13-10-2b	3-phase 60Hz: 220V D, 380V Y.
43	50 913 00	Stator 13-10-2b	1-phase 50Hz: 220-240V.
43	50 913 02	Stator 13-10-2b	1-phase 60Hz: 220-240V.
44	50 914 00	Shaft unit 100MM	
45	50 988 06	Bearing housing	
46	50 983 00	Gasket NBR	
47	50 287 04	Ball bearing 6304-2Z/C3WT 20X52X15	
48	50 037 01	O-ring 119,5X3,0 NBR	
49	50 037 04	O-ring 109,5X3,0 NBR	
50	133 064	O-ring 19.2X3.0 NBR	
51	133 063	Inspection screw	
52	50 990 00	Intermediate piece	
53	410 013	Plain washer A4-A 140	
54	50 020 04	Hex.socket hd screw M6X20-A4-70	
55	50 901 00	Mechanical seal	
56	410 083	O-ring 57,5X3,0 FPM	
57	410 040	Pressure equalizer	
58	130 943	O-ring 139.3X5.7 NBR	
60	51 146 00	Seal housing cover	
61	50 021 38	Plain washer A4-A 140	
62	410 006	Hexagon head screw M8X60-A4-80	
63	51 091 00	Guide plate	
64	50 930 00	Clamping sleeve	
65	50 931 00	Adjustment screw	
66	50 837 00	Impeller	3-phase 50 Hz
66	50 837 01	Impeller	3-phase 60 Hz
66	50 837 02	Torque flow impeller	1-phase 60 Hz
66	51 092 00	Impeller	1-phase 50 Hz
67	410 014	Plain washer A2-170HV M8	
68	410 006	Hexagon head screw M8X60-A4-80	
69	50 037 18	O-ring 8X3 NBR	
70	50 021 26	Stud M8X105-A2-70	
71	410 161	O-ring 215*4,0 NBR	
72	410 167	Parallel pin CP-H8-5X12-2343	
73	50 022 22	Hexagon nut M10-A4-70	
74	50 022 26	Plain washer A4-A 140	

Pos. No	Part. No	Denomination	Qty/Version
			281
75	130 890	Discharge connection DN 75 ISO G3" OUTER	1
75	140 152	Discharge connection DN 75 HOSE 3"	1
75	50 348 00	Discharge connection DN 75 NPT 3-8 OUTER	1
76	140 366	O-ring 56,52X5,34	1
77	410 169	Stud 10X35-A2-70	2
78	50 065 01	Pump housing	1
79	132 740	Stand	1
80	50 021 38	Plain washer A4-A 140	4
81	50 021 37	Hexagon nut M8-A4-70	4
100	410 039	Cable with plug	(ALSO ORDER POS. NO. 110, 111, 113.) Subcab 3G1.5mm ² . 1
101	410 058	Motor cable	(ALSO ORDER POS. NO. 12, 112, 113.) Screened 3X1.5mm ² (13.5-14.9MM) FGB. *
102	410 061	Motor cable	(ALSO ORDER POS. NO. 12, 113.) Subcab S3X2,5mm ² +3X2,5mm ² (18,7-20MM). *
103	131 042	Motor cable	(ALSO ORDER POS. NO. 110, 111, 113.) Subcab 3G1.5mm ² (10-11MM). *
104	131 040	Motor cable	(ALSO ORDER POS. NO. 113.) Subcab 4G1.5mm ² (10.5-11.5MM). *
105	131 039	Motor cable	(ALSO ORDER POS. NO. 113.) Subcab 4G2.5mm ² (12.5-13.5MM). *
106	410 062	Motor cable	(ALSO ORDER POS. NO. 113.) Subcab 4G1.5mm ² +2X1.5mm ² (15-16MM). *
107	410 064	Motor cable	(ALSO ORDER POS. NO. 110, 111, 113.) Subcab 14AWG/3 2.08mm ² (13.2-14.2MM). *
108	410 065	Motor cable	(ALSO ORDER POS. NO. 113.) Subcab 14AWG/4 2.08mm ² (14.2-15.2MM). *
109	410 066	Motor cable	(ALSO ORDER POS. NO. 113.) Subcab 14AWG/7 2.08mm ² (18-20 MM). *
110	50 040 05	Insulating sleeve 0.5-6MM2	2
111	50 040 04	Flat pin sleeve 1-2.5MM2	2
111	50 040 09	Flat pin sleeve 0.75-1.5MM2	2
112	410 055	Shrink hose	*
113	132 354	Insulating hose (18-22MM)	*
113	410 056	Insulating hose (10-16MM)	*

Pos. No	Part. No	Denomination	Qty/Version
200	50 986 00	Con.term.board unit	(ALSO ORDER POS. NO. 12, 214.) 3-phase Y, D, YSER, Y//. 1
201	50 986 01	Con.term.board unit	(ALSO ORDER POS. NO. 12.) 1-phase 1
202	50 891 05	Starter unit	(ALSO ORDER POS. NO. 11, 212, 213, 214.) Contactor unit 3-phase, 50Hz: 380-415V Y. 60Hz: 380V Y. 1
202.1	410 008	Hex.socket hd screw M4X16-A2-70	4
202.2	410 012	Lock nut	4
202.3	410 109	Contactor	1
202.4	50 883 00	Mounting plate	1
202.5	50 509 00	Cable set	1
202.6	50 905 01	Motor protector	SMART 1
203	50 891 06	Starter unit	(ALSO ORDER POS. NO. 12, 212, 213, 214.) Contactor unit 3-phase, 60 Hz: 460-480V YSER. 1
203.1	410 008	Hex.socket hd screw M4X16-A2-70	4
203.2	410 009	Hex.socket hd screw	1
203.3	410 012	Lock nut	4
203.4	50 020 07	Lock nut M6-A4-70	1
203.5	50 040 05	Insulating sleeve 0.5-6MM2	1
203.6	50 040 09	Flat pin sleeve 0.75-1.5MM2	1
203.7	410 108	Contactor	1
203.8	50 935 00	Transformer	1
203.9	50 883 00	Mounting plate	1
203.10	50 509 00	Cable set	1
203.11	50 905 04	Motor protector	SMART 1
204	50 891 07	Starter unit	(ALSO ORDER POS. NO. 12, 212, 213, 214.) Contactor unit 3-phase, 50Hz: 500V Y. 1
204.1	410 008	Hex.socket hd screw M4X16-A2-70	4
204.2	410 012	Lock nut	4
204.3	410 110	Contactor	1
204.4	50 883 00	Mounting plate	1
204.5	50 509 00	Cable set	1
204.6	50 905 02	Motor protector	SMART 1
205	50 891 08	Starter unit	(ALSO ORDER POS. NO. 12, 212, 213, 214.) Contactor unit 3-phase, 50Hz: 500-550V Y. 1
205.1	410 008	Hex.socket hd screw M4X16-A2-70	4
205.2	410 009	Hex.socket hd screw	1
205.3	410 012	Lock nut	4

Pos. No	Part. No	Denomination	Qty/Version
			281
205.4	50 020 07	Lock nut M6-A4-70	1
205.5	50 040 05	Insulating sleeve 0.5-6MM2	1
205.6	50 040 09	Flat pin sleeve 0.75-1.5MM2	1
205.7	410 108	Contactor	1
205.8	50 935 02	Transformer	1
205.9	50 883 00	Mounting plate	1
205.10	50 509 00	Cable set	1
205.11	50 905 02	Motor protector	SMART
206	50 891 09	Starter unit	(ALSO ORDER POS. NO. 12, 212, 213, 214.) Contactor unit 3-phase, 60Hz: 575-600V Y.
206.1	410 008	Hex.socket hd screw M4X16-A2-70	4
206.2	410 009	Hex.socket hd screw	1
206.3	410 012	Lock nut	4
206.4	50 020 07	Lock nut M6-A4-70	1
206.5	50 040 05	Insulating sleeve 0.5-6MM2	1
206.6	50 040 09	Flat pin sleeve 0.75-1.5MM2	1
206.7	410 108	Contactor	1
206.8	50 935 01	Transformer	1
206.9	50 883 00	Mounting plate	1
206.10	50 509 00	Cable set	1
206.11	50 905 05	Motor protector	SMART
207	50 891 10	Starter unit	(ALSO ORDER POS. NO. 12, 212, 213, 214.) Contactor unit 3-phase, 60Hz: 380V Y.
207.1	410 008	Hex.socket hd screw M4X16-A2-70	4
207.2	410 012	Lock nut	4
207.3	410 109	Contactor	1
207.4	50 883 00	Mounting plate	1
207.5	50 509 00	Cable set	1
207.6	50 905 04	Motor protector	SMART
208	50 891 11	Starter unit	(ALSO ORDER POS. NO. 12, 212, 213, 214.) Contactor unit 3-phase, 50Hz: 220-230V D.
208.1	410 008	Hex.socket hd screw M4X16-A2-70	4
208.2	410 012	Lock nut	4
208.3	410 108	Contactor	1
208.4	50 883 00	Mounting plate	1
208.5	50 509 00	Cable set	1
208.6	50 905 00	Motor protector	SMART

Pos. No	Part. No	Denomination	Qty/Ver- sion
209	50 891 12	Starter unit (ALSO ORDER POS. NO. 12, 212, 213, 214.) Contactor unit 3-phase, 60Hz: 230V Y//.	1
209.1	410 008	Hex.socket hd screw M4X16-A2-70	4
209.2	410 012	Lock nut	4
209.3	410 111	Contactor	1
209.4	50 883 00	Mounting plate	1
209.5	50 509 00	Cable set	1
209.6	50 905 03	Motor protector SMART	1
210	50 891 15	Starter unit (ALSO ORDER POS. NO. 12, 212, 213 (both), 214.) Capacitor unit 1-phase, 50Hz: 220-240V.	1
210.1	410 008	Hex.socket hd screw M4X16-A2-70	2
210.3	410 012	Lock nut	2
210.4	50 021 36	Lock nut M8-A4-70	2
210.5	410 089	Capacitor	1
210.6	410 140	Capacitor	1
210.7	50 883 00	Mounting plate	1
210.8	50 906 02	Start relay	1
210.9	51 004 00	Cable set SNT	1
211	50 891 16	Starter unit (ALSO ORDER POS. NO. 12, 212, 213 (both), 214.) Capacitor unit 1-phase, 60Hz: 220-240V.	1
211.1	410 008	Hex.socket hd screw M4X16-A2-70	2
211.3	410 012	Lock nut	2
211.4	50 021 36	Lock nut M8-A4-70	2
211.5	410 089	Capacitor	1
211.6	410 141	Capacitor	1
211.7	50 883 00	Mounting plate	1
211.8	50 906 02	Start relay SNT	1
211.9	51 004 00	Cable set	1
212	50 040 05	Insulating sleeve 0.5-6MM2	5
213	50 040 07	Flat pin sleeve 2.5-6MM2	1
213	50 040 09	Flat pin sleeve 0.75-1.5MM2	4
214	410 034	Closed end splice 3,0-6,0(AWG 12-10)	5
400	410 035	Plug contact 250V 1PH 10A T12 SEV1011	1
400	410 038	Plug contact 250V 1PH 15A NEMA 6-15	1
400	410 042	Plug contact 230V 1PH 16A CEE 3P	1

Pos. No	Part. No	Denomination	Qty/Ver- sion
400	50 100 00	Plug contact 380-415V 3PH 16A CEE 5P	1
400	50 102 00	Phase shifter 220-575V 0-16A	1
500	51 165 00	O-ring kit	1
600	51 163 00	Basic repair kit	1
600.1	50 287 03	Ball bearing 6301-2Z/C3WT 12X37X12	1
600.2	50 287 04	Ball bearing 6304-2Z/C3WT 20X52X15	1
600.3	410 040	Pressure equalizer	2
600.4	50 901 00	Mechanical seal	1
600.5	51 165 00	O-ring kit	1
700	51 095 00	Anode unit	1

* piece goods



Grindex AB • Box 7025 • 174 07 Sundbyberg • Sweden • Tel +468 606 66 00 • Fax +468 745 53 28 • marketing@grindex.com