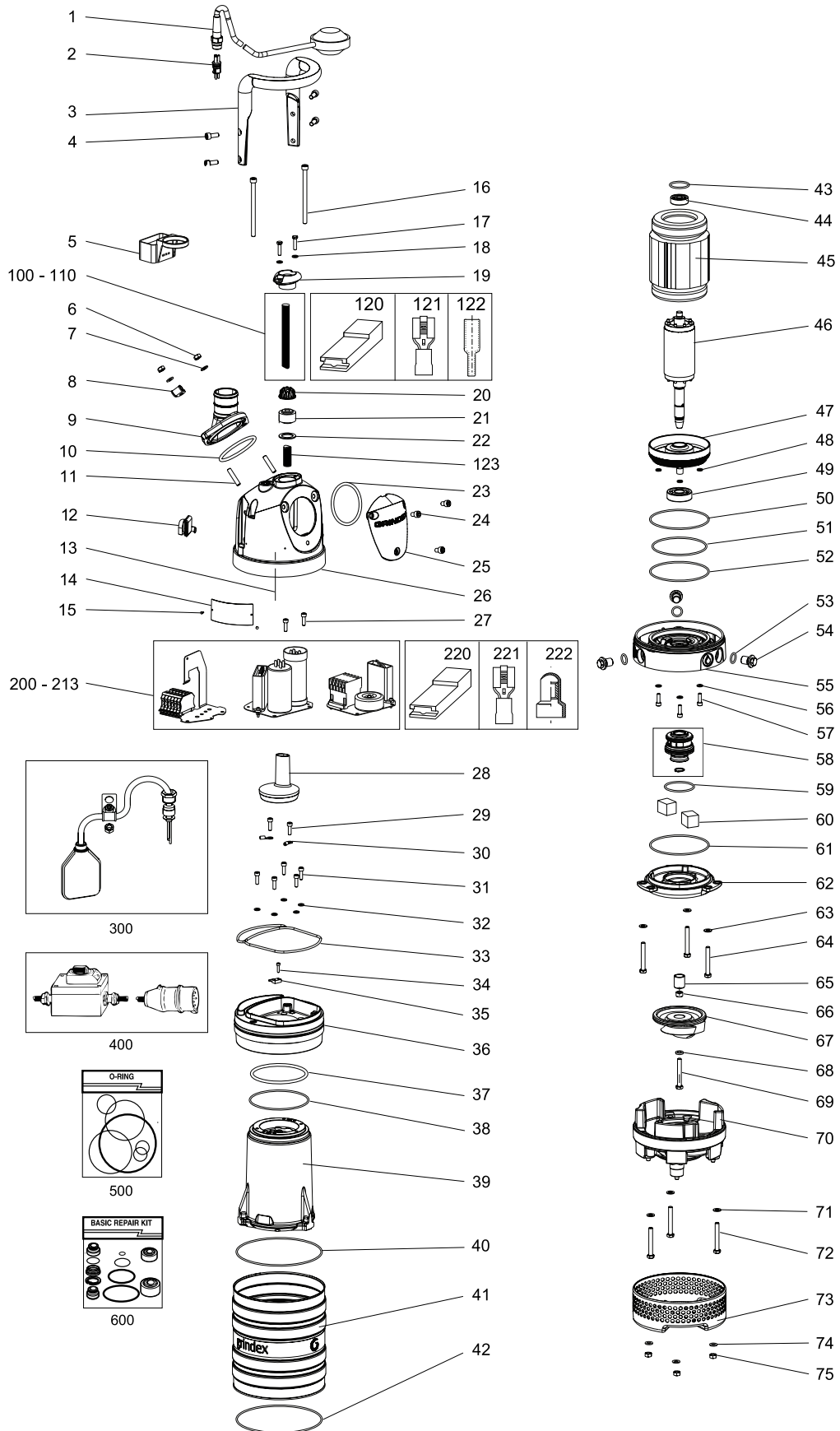


Parts List



www.grindex.com

MINEX — 8101.171



Parts List

MINEX — 8101.171

Overview

Table of Contents

This publication contains the following topics:

Topic

Preface	4
Practical Information	5
Data Plate Interpretation.....	6
Order parts	7
Spare Parts	8

Preface

Purpose

The purpose of this manual is to give the reader information about available spare parts and accessories for the product.

Recipient

The manual is principally intended for Grindex

- customers
 - service personnel *and*
 - sales personnel.
-

Contact

Please contact Grindex if any information in this publication is

- incorrect
 - missing
 - difficult to find *or*
 - irrelevant.
-

Reference

More information about the product is available in the following documents:

- Installation, Operation and Maintenance
 - Accessories. Please see Grindex Accessories list.
-

Practical Information

Overview

Table of Contents

This chapter contains the following topics:

Topic

Data Plate Interpretation	6
Data Plate	6
Order parts	7

Data Plate Interpretation

Introduction

The Grindex product is always provided with data plates:

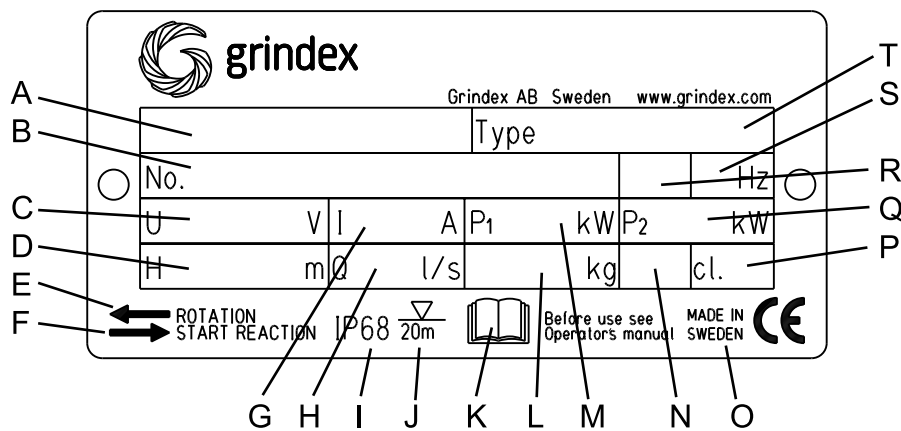
- The general data plate is used on all products.
- The approval plate is added to all explosion proof products.

Data Plate

The product may only be operated within the parameters stated on the data plate.

Illustration

This is an illustration of a general data plate.



Field description

This table shows the fields on the general data plate, and which information each field contains.

Field	Description	Field	Description
A	Pump model	K	Read the Installation, Operation and Maintenance Manual
B	Serial number	L	Product weight
C	Rated voltage	M	Maximum Power consumption
D	Maximum height	N	Locked rotor code letter
E	Direction of Impeller rotation	O	Country of origin
F	Direction of starting jerk	P	Thermal class
G	Rated current	Q	Rated shaft power
H	Maximum capacity	R	Phase; type of current
I	Degree of protection	S	Frequency
J	Maximum submersion depth	T	Pump type number

Order parts

Order

When ordering spare parts, state product number and serial number of the product, spare part number and quantity.

Requirements

Genuine Grindex parts must always be used for repairs if the product is to fulfill requirements and obtain official approval.

Spare Parts

Pos. No	Part. No	Denomination	Qty/Version	
			171	
1	50 937 01	Level regulator unit CSA & UL (OPTIONAL) 60HZ 1-PHASE	1	
1	50 937 00	Level regulator unit EU 50HZ (OPTIONAL) 1-PHASE	1	
2	50 936 00	Plug contact (OPTIONAL)	1	
3	50 833 00	Handle compl.	1	
4	50 021 33	Hex.socket hd screw M8X20-A4-80 (GUIDING CL)	4	
5	50 848 00	Holder (OPTIONAL)	1	
6	50 021 37	Hexagon nut M8-A4-70	3	
7	50 021 38	Plain washer A4-A 170	2	
8	410 077	Cable clamp (OPTIONAL)	1	
9	410 027	Coupling part DN 52 INNER THREAD G2	1	
9	51 149 00	Discharge connection DN 50 HOSE 2"	1	
9	51 149 01	Discharge connection DN 50 ISO-G 2A OUTER	1	
9	51 149 02	Discharge connection DN 50 2"-11.5 NPT OUTER	1	
10	410 015	O-ring 79,2X5,7-NBR	1	
11	410 078	Stud M8X30-A2-70	2	
12	50 836 00	Air release valve	1	
13	50 892 00	Connection plate	1	Contactor unit 3-phase. 50Hz: 380-415V Y, 500V Y, 550V Y, 220-230V D. 60Hz: 230V Y//, 380V Y, 575-600V Y, 460-480V YSER, 220-230V D.
13	50 892 02	Connection plate	1	Contactor unit 3-phase. 50Hz: 220-230V D, 400V Y.
13	50 892 04	Connection plate	1	Capacitor unit 1-phase. 50Hz: 110V, 220-240V. 60Hz: 115V, 220-240V.
13	50 899 00	Connection plate	1	Terminal board 3-phase. Y, D, YSER, Y//.
13	50 918 00	Connection plate	1	Screened 3x1,5mm ² FGB, Subcab S3x2,5mm ² +3x2,5mm ² /3+4x1,5 mm ² .
13	50 981 00	Connection plate	1	Terminal board 1-phase.

Pos. No	Part. No	Denomination	Qty/Version		
			171		
13	50 982 00	Connection plate	Contacteur unit 3-phase. 50Hz: 220-230V D, 380-415V Y, 500V Y, 550V Y. 60Hz: 200V Y, 220V D, 380VY, 575-600V Y.	1	
13	50 982 01	Connection plate	Contacteur unit 3-phase. 60Hz: 230VY//, 460-480V YSER.	1	
13	50 984 00	Connection plate	Terminal board 3-phase Y, D.	1	
13	50 985 00	Connection plate	Terminal board 3-phase YSER, Y//.	1	
13	50 991 00	Connection plate	Terminal board 1-phase. 60Hz: 115V //, 230V SER.	1	
14	50 907 01	Data plate		1	
15	410 000	Drive screw 4X5-A2-70		4	
16	50 021 21	Hex.socket hd screw M8X120-A2-70		2	
17	410 001	Hexagon head screw M6X25-A4-70		2	
18	410 013	Plain washer A4-A 170		2	
19	50 932 00	Entrance flange (10)-20MM		1	
19	50 932 01	Entrance flange (22)-26MM		1	
20	50 926 00	Cable clip (10)-12MM		1	
20	50 926 01	Cable clip (12)-14MM		1	
20	50 926 02	Cable clip (14)-16MM		1	
20	50 926 04	Cable clip (18)-20MM		1	
20	50 926 05	Cable clip (18)-22MM		1	
20	50 926 06	Cable clip (22)-26MM		1	
20	50 926 07	Cable clip (22)-26MM		1	
21	410 043	Seal sleeve (10)-12MM		1	
21	410 044	Seal sleeve (12)-14MM		1	
21	410 045	Seal sleeve (14)-16MM		1	
21	410 047	Seal sleeve (18)-20MM		1	
21	410 048	Seal sleeve (20)-22MM		1	
21	410 049	Seal sleeve (22)-24MM		1	
21	410 050	Seal sleeve (24)-26MM		1	
22	50 127 00	Plain washer (24)-26MM		1	
22	50 127 04	Plain washer (10)-22MM		1	
23	410 015	O-ring 79,2X5,7-NBR		1	
24	410 010	Hex.socket hd screw M8X12-A2-70		3	
25	50 832 00	Cover		1	
26	51 153 00	Main cover		1	
26	51 153 01	Main cover	Prepared for float switch.	1	

Pos. No	Part. No	Denomination	Qty/Version	
			171	
27	50 020 04	Hex.socket hd screw M6X20-A4-70	2	
28	50 835 00	Protective casing	1	
29	50 020 04	Hex.socket hd screw M6X20-A4-70	1	
30	410 032	Cable lug INSUL.UL/CSA 1.04-2.6MM2	2	
30	410 177	Cable lug INSUL.UL/CSA 2.62-6.64MM2	1	
31	50 020 04	Hex.socket hd screw M6X20-A4-70	5	
32	410 013	Plain washer A4-A 170	5	
33	50 925 01	Gasket	1	
34	410 008	Hex.socket hd screw M4X16-A2-70	1	
35	410 390	Thermal detectors	1	
36	51 150 00	Cover	1	
37	410 016	O-ring 109,1X5,7 NBR	1	
38	50 037 01	O-ring 119,5X3,0 NBR	1	
39	51 147 02	Stator housing	1	50Hz: 1-phase P1=1,7kW. 60Hz: 1-phase P1=1,8kW.
39	51 152 00	Stator housing	1	50Hz: 1-phase P1=1,2kW, 3-phase P1=1,6kW. 60Hz: 1-phase P1=1,3kW, 3-phase P1=1,8kW.
40	410 087	O-ring 174,3X5,7 NBR	1	
41	50 834 00	Outer casing	1	50Hz: 1-phase P1=1,7kW. 60Hz: 1-phase P1=1,8kW.
41	51 154 00	Outer casing	1	50Hz: 1-phase P1=1,2kW, 3-phase P1=1,6kW. 60Hz: 1-phase P1=1,3kW, 3-phase P1=1,8kW.
42	410 022	O-ring 175,0X3,0 NBR	1	
43	50 037 63	O-ring 36,2X3,0 FPM	1	
44	50 287 03	Ball bearing 6301-2Z/C3WT 12X37X12	1	
45	50 913 00	Stator 13-10-2b	1	50Hz: 1-phase P1=1,7kW 220V-240V.
45	50 913 02	Stator 13-10-2b	1	60Hz: 1-phase P1=1,8kW 230V.
45	50 933 00	Stator 13-06-2b	1	50Hz: 3-phase P1=1,6kW 380V-415V Y, 220V-230V D.
45	50 933 01	Stator 13-06-2b	1	50Hz: 3-phase P1=1,6kW 500V-550V Y. 60Hz: 3-phase P1=1,8kW 575V-600V Y.

Pos. No	Part. No	Denomination		Qty/Version
				171
45	50 933 02	Stator 13-06-2b	60Hz: 3-phase P1=1,8kW 460V-480V YSER, 230V Y//.	1
45	50 933 03	Stator 13-06-2b	60Hz: 3-phase P1=1,8kW 380V Y, 220V D.	1
45	50 934 00	Stator 13-06-2b	60Hz: 1-phase P1=1,3kW 220V-240V.	1
45	50 934 01	Stator 13-06-2b	60Hz: 1-phase P1=1,3kW 115V.	1
45	50 934 02	Stator 13-06-2b	50Hz: 1-phase P1=1,2kW 220V-240V.	1
45	50 934 03	Stator 13-06-2b	50Hz: 1-phase P1=1,2kW 110V.	1
46	50 914 00	Shaft unit	50Hz: 1-phase P1=1,7kW. 60Hz: 1-phase P1=1,8kW.	1
46	50 914 03	Shaft unit	50Hz: 1-phase P1=1,2kW, 3-phase P1=1,6kW. 60Hz: 1-phase P1=1,3kW, 3-phase P1=1,8kW.	1
47	50 988 06	Bearing housing		1
48	50 983 00	Gasket NBR		3
49	50 287 04	Ball bearing 6304-2Z/C3WT 20X52X15		1
50	50 037 01	O-ring 119,5X3,0 NBR		1
51	50 037 04	O-ring 109,5X3,0 NBR		1
52	50 037 01	O-ring 119,5X3,0 NBR		1
53	133 064	O-ring 19.2X3.0 NBR		9
54	133 063	Inspection screw		3
55	50 989 00	Intermediate piece		1
56	410 013	Plain washer A4-A 170		3
57	50 020 04	Hex.socket hd screw M6X20-A4-70		3
58	50 901 00	Mechanical seal		1
59	410 083	O-ring 57,5X3,0 FPM		1
60	410 040	Pressure equalizer		2
61	410 017	O-ring 124,5X3,0-NBR		1
62	50 928 00	Seal housing cov.coa		1
63	50 021 38	Plain washer A4-A 170		3
64	410 006	Hexagon head screw M8X60-A4-80		3
65	50 930 00	Clamping sleeve		1
66	50 931 00	Adjustment screw		1
67	50 942 00	Impeller	50Hz: 1-phase P1=1,7kW 230V, 3-phase P1=1,6kW.	1

Pos. No	Part. No	Denomination	Qty/Version	
			171	
67	50 942 01	Impeller	50Hz: 1-phase P1=1,2kW 110V & 230V. 60Hz: 3-phase P1=1,8kW.	1
67	50 942 02	Impeller	60Hz: 1-phase P1=1,3kW 115V.	1
67	50 942 03	Impeller	60Hz: 1-phase P1=1,8kW 230V.	1
68	410 014	Plain washer A2-170HV M8		1
69	410 006	Hexagon head screw M8X60-A4-80		1
70	50 943 00	Diffuser part		1
70	50 943 01	Diffuser part	Prepared for zinc anode.	1
71	50 021 38	Plain washer A4-A 170		3
72	410 006	Hexagon head screw M8X60-A4-80		3
73	50 929 00	Strainer compl.		1
74	50 021 38	Plain washer A4-A 170		3
75	50 021 37	Hexagon nut M8-A4-70		2
100	410 039	Cable with plug SUBCAB 3G1,5MM2	(10 - 11mm). (ALSO ORDER POS. NO. 13, 120, 121, 123.)	1
101	410 058	Motor cable SCREENED 3X1,5MM2 FGB	(13.5-14.9mm). (ALSO ORDER POS. NO. 13, 122, 123.)	*
102	410 061	Motor cable SUBCAB S3X2,5+3X2,5MM2	(18,7-20mm). (ALSO ORDER POS. NO. 13, 123.)	*
103	410 402	Motor cable SUBCAB 3G2,5MM2	(11-12mm). (ALSO ORDER POS. NO. 13, 120, 121, 123.)	*
104	131 042	Motor cable SUBCAB 3G1,5MM2	(10-11mm). (ALSO ORDER POS. NO. 13, 120, 121, 123.)	*
105	131 040	Motor cable SUBCAB 4G1,5MM2	(10.5-11.5mm). (ALSO ORDER POS. NO. 13, 123.)	*
106	131 039	Motor cable SUBCAB 4G2,5MM2	(12.5-13.5mm). (ALSO ORDER POS. NO. 13, 123.)	*
107	410 062	Motor cable SUBCAB 4G1,5+2X1,5MM2	(15-16mm). (ALSO ORDER POS. NO. 13, 123.)	*
108	410 064	Motor cable SUBCAB 14AWG/3	(13.2-14.2mm). (ALSO ORDER POS. NO. 13, 123.)	*
109	410 065	Motor cable SUBCAB 14AWG/4	(14.2-15.2mm). (ALSO ORDER POS. NO. 13, 123.)	*
110	410 066	Motor cable SUBCAB 14AWG/7	(18-20mm). (ALSO ORDER POS. NO. 13, 123.)	*
120	50 040 05	Insulating sleeve 0.5-6MM2		2
121	50 040 04	Flat pin sleeve 1-2.5MM2		2
121	50 040 09	Flat pin sleeve 0.75-1.5MM2		2
122	410 055	Shrink hose		*

Pos. No	Part. No	Denomination	Qty/Version	
			171	
123	132 354	Insulating hose (18-22MM)	*	
123	410 056	Insulating hose (10-16MM)	*	
200	50 986 00	Con.term.board unit	3-phase Y, D, YSER, Y//. (ALSO ORDER POS. NO. 13, 222.)	1
201	50 986 01	Con.term.board unit	1-phase. (ALSO ORDER POS. NO. 13, 222.)	1
202	50 891 04	Starter unit	Contacteur unit 60Hz: 3-phase P1=1,8kW 230V Y//, 220-230V D. (ALSO ORDER POS. NO. 13, 220, 221, 222.)	1
202.1	410 008	Hex.socket hd screw M4X16-A2-70		4
202.2	410 012	Lock nut		4
202.3	410 108	Contacteur		1
202.4	50 883 00	Mounting plate		1
202.5	50 509 00	Cable set		1
202.6	50 905 03	Motor protector	SMART	1
203	50 891 05	Starter unit	Contacteur unit 50Hz: 3-phase P1=1,6kW 380-415V Y. (ALSO ORDER POS. NO. 13, 220, 221, 222.)	1
203.1	410 008	Hex.socket hd screw M4X16-A2-70		4
203.2	410 012	Lock nut		4
203.3	410 109	Contacteur		1
203.4	50 883 00	Mounting plate		1
203.5	50 509 00	Cable set		1
203.6	50 905 01	Motor protector	SMART	1
204	50 891 06	Starter unit	Contacteur unit 60Hz: 3-phase P1=1,8kW 460-480V YSER. (ALSO ORDER POS. NO. 13, 220, 221, 222.)	1
204.1	410 008	Hex.socket hd screw M4X16-A2-70		4
204.2	410 009	Hex.socket hd screw M6X30-A2-70		1
204.3	410 012	Lock nut		4
204.4	50 020 07	Lock nut M6-A4-70		1
204.5	50 040 05	Insulating sleeve 0.5-6MM2		1
204.6	50 040 09	Flat pin sleeve 0.75-1.5MM2		1
204.7	410 108	Contacteur		1
204.8	50 935 00	Transformer		1
204.9	50 883 00	Mounting plate		1

Pos. No	Part. No	Denomination	Qty/Version	
			171	
204.10	50 509 00	Cable set	1	
204.11	50 905 04	Motor protector SMART	1	
205	50 891 07	Starter unit Contactor unit 50Hz: 3-phase P1=1,6kW 500V Y. (ALSO ORDER POS. NO. 13, 220, 221, 222.)	1	
205.1	410 008	Hex.socket hd screw M4X16-A2-70	4	
205.2	410 012	Lock nut	4	
205.3	410 110	Contactor	1	
205.4	50 883 00	Mounting plate	1	
205.5	50 509 00	Cable set	1	
205.6	50 905 02	Motor protector SMART	1	
206	50 891 08	Starter unit Contactor unit 50Hz: 3-phase P1=1,6kW 550V Y. (ALSO ORDER POS. NO. 13, 220, 221, 222.)	1	
206.1	410 008	Hex.socket hd screw M4X16-A2-70	4	
206.2	410 009	Hex.socket hd screw M6X30-A2-70	1	
206.3	410 012	Lock nut	4	
206.4	50 020 07	Lock nut M6-A4-70	1	
206.5	50 040 05	Insulating sleeve 0.5-6MM2	1	
206.6	50 040 09	Flat pin sleeve 0.75-1.5MM2	1	
206.7	410 108	Contactor	1	
206.8	50 935 02	Transformer	1	
206.9	50 883 00	Mounting plate	1	
206.10	50 509 00	Cable set	1	
206.11	50 905 02	Motor protector SMART	1	
207	50 891 09	Starter unit Contactor unit 60Hz: 3-phase P1=1,8kW 575-600V Y. (ALSO ORDER POS. NO. 13, 220, 221, 222.)	1	
207.1	410 008	Hex.socket hd screw M4X16-A2-70	4	
207.2	410 009	Hex.socket hd screw M6X30-A2-70	1	
207.3	410 012	Lock nut	4	
207.4	50 020 07	Lock nut M6-A4-70	1	
207.5	50 040 05	Insulating sleeve 0.5-6MM2	1	
207.6	50 040 09	Flat pin sleeve 0.75-1.5MM2	1	
207.7	410 108	Contactor	1	
207.8	50 935 01	Transformer	1	

Pos. No	Part. No	Denomination	Qty/Version	
			171	
207.9	50 883 00	Mounting plate	1	
207.10	50 509 00	Cable set	1	
207.11	50 905 05	Motor protector	1	SMART
208	50 891 10	Starter unit	1	Contacteur unit 60Hz: 3-phase P1=1,8kW 380V Y. (ALSO ORDER POS. NO. 13, 220, 221, 222.)
208.1	410 008	Hex.socket hd screw M4X16-A2-70	4	
208.2	410 012	Lock nut	4	
208.3	410 109	Contacteur	1	
208.4	50 883 00	Mounting plate	1	
208.5	50 509 00	Cable set	1	
208.6	50 905 04	Motor protector	1	SMART
209	50 891 11	Starter unit	1	Contacteur unit 50Hz: 3-phase P1=1,6kW 220-230V D. (ALSO ORDER POS. NO. 13, 220, 221, 222.)
209.1	410 008	Hex.socket hd screw M4X16-A2-70	4	
209.2	410 012	Lock nut	4	
209.3	410 108	Contacteur	1	
209.4	50 883 00	Mounting plate	1	
209.5	50 509 00	Cable set	1	
209.6	50 905 00	Motor protector	1	SMART
210	50 891 13	Starter unit	1	Capacitor unit 50Hz: 1-phase P1=1,2kW 110V. 60Hz: 1-phase P1=1,3kW 115V. (ALSO ORDER POS. NO. 13, 220, 221 (both), 222.)
210.1	410 008	Hex.socket hd screw M4X16-A2-70	2	
210.3	410 012	Lock nut	2	
210.4	50 021 36	Lock nut M8-A4-70	2	
210.5	410 137	Capacitor	1	
210.6	410 138	Capacitor	1	
210.7	50 883 00	Mounting plate	1	
210.8	50 906 03	Start relay	1	
210.9	51 004 00	Cable set	1	
211	50 891 14	Starter unit	1	Capacitor unit 50Hz: 1-phase P1=1,2kW 220-240V. 60Hz: 1-phase P1=1,3kW 220-240V. (ALSO ORDER POS. NO. 13, 220, 221 (both), 222.)

Pos. No	Part. No	Denomination	Qty/Version	
			171	
211.1	410 008	Hex.socket hd screw M4X16-A2-70	2	
211.3	410 012	Lock nut	2	
211.4	50 021 36	Lock nut M8-A4-70	2	
211.5	410 377	Capacitor	1	
211.6	410 376	Capacitor	1	
211.7	50 883 00	Mounting plate	1	
211.8	50 906 02	Start relay	1	
211.9	51 004 00	Cable set	1	
212	50 891 15	Starter unit	1	Capacitor unit 50Hz: 1-phase P1=1,7kW 220-240V. (ALSO ORDER POS. NO. 13, 220, 221 (both), 222.)
212.1	410 008	Hex.socket hd screw M4X16-A2-70	2	
212.3	410 012	Lock nut	2	
212.4	50 021 36	Lock nut M8-A4-70	2	
212.5	410 089	Capacitor	1	
212.6	410 140	Capacitor	1	
212.7	50 883 00	Mounting plate	1	
212.8	50 906 02	Start relay	1	
212.9	51 004 00	Cable set	1	
213	50 891 16	Starter unit	1	Capacitor unit 60Hz: 1-phase P1=1,8kW 220-240V. (ALSO ORDER POS. NO. 13, 220, 221 (both), 222.)
213.1	410 008	Hex.socket hd screw M4X16-A2-70	2	
213.3	410 012	Lock nut	2	
213.4	50 021 36	Lock nut M8-A4-70	2	
213.5	410 089	Capacitor	1	
213.6	410 141	Capacitor	1	
213.7	50 883 00	Mounting plate	1	
213.8	50 906 02	Start relay	1	
213.9	51 004 00	Cable set	1	
220	50 040 05	Insulating sleeve 0.5-6MM2	5	
221	50 040 07	Flat pin sleeve 2.5-6MM2	1	
221	50 040 09	Flat pin sleeve 0.75-1.5MM2	4	
222	410 033	Closed end splice 5.1-10,6;(AWG 18-8)L=38	1	
222	410 034	Closed end splice 3,0-6,0(AWG 12-10)	5	

Pos. No	Part. No	Denomination	Qty/Version	
			171	
300	51 155 00	Float switch kit EU 50HZ 3-PHASE	1	
300.1	140 049	Hex.socket hd screw	1	
300.2	50 021 36	Lock nut M8-A4-70	1	
300.3	410 034	Closed end splice 3,0-6,0(AWG 12-10)	1	
300.4	410 370	Plain washer	1	
300.5	-	Mounting instruction	1	
300.6	410 077	Cable clamp	1	
300.7	51 278 00	Sleeve	1	
300.8	410 367	Gland screw	1	
300.9	50 176 00	Level switch EU 50HZ 3-PHASE	1	
300.10	-	Fixing plate	1	
400	410 035	Plug contact 250V 1PH 10A T12 SEV1011	1	
400	410 036	Plug contact 100-130V/16A 2P+GND K9000	1	
400	410 037	Plug contact 125V/15A,60HZ	1	
400	410 038	Plug contact 250V 1PH 15A NEMA 6-15	1	
400	410 042	Plug contact 230V 1PH 16A CEE 3P	1	
400	50 100 00	Plug contact 380-415V 3PH 16A CEE 5P	1	
400	50 102 00	Phase shifter 220-575V 0-16A	1	
500	51 166 00	O-ring kit	1	Contains all pos. numbered O-rings.
600	51 181 00	Basic repair kit	1	
600.1	50 287 03	Ball bearing 6301-2Z/C3WT 12X37X12	1	
600.2	50 287 04	Ball bearing 6304-2Z/C3WT 20X52X15	1	
600.3	410 040	Pressure equalizer	2	
600.4	50 901 00	Mechanical seal	1	
600.5	51 166 00	O-ring kit	1	Contains all pos. numbered O-rings.
700	51 077 00	Anode unit	1	

* piece goods



Grindex AB • Box 7025 • SE-174 07 Sundbyberg • Sweden • Tel +46 8 606 66 00 • Fax +46 8 745 53 28 • marketing@grindex.com

© Grindex AB. The original instruction is in English. All non-English instructions are translations of the original instruction.