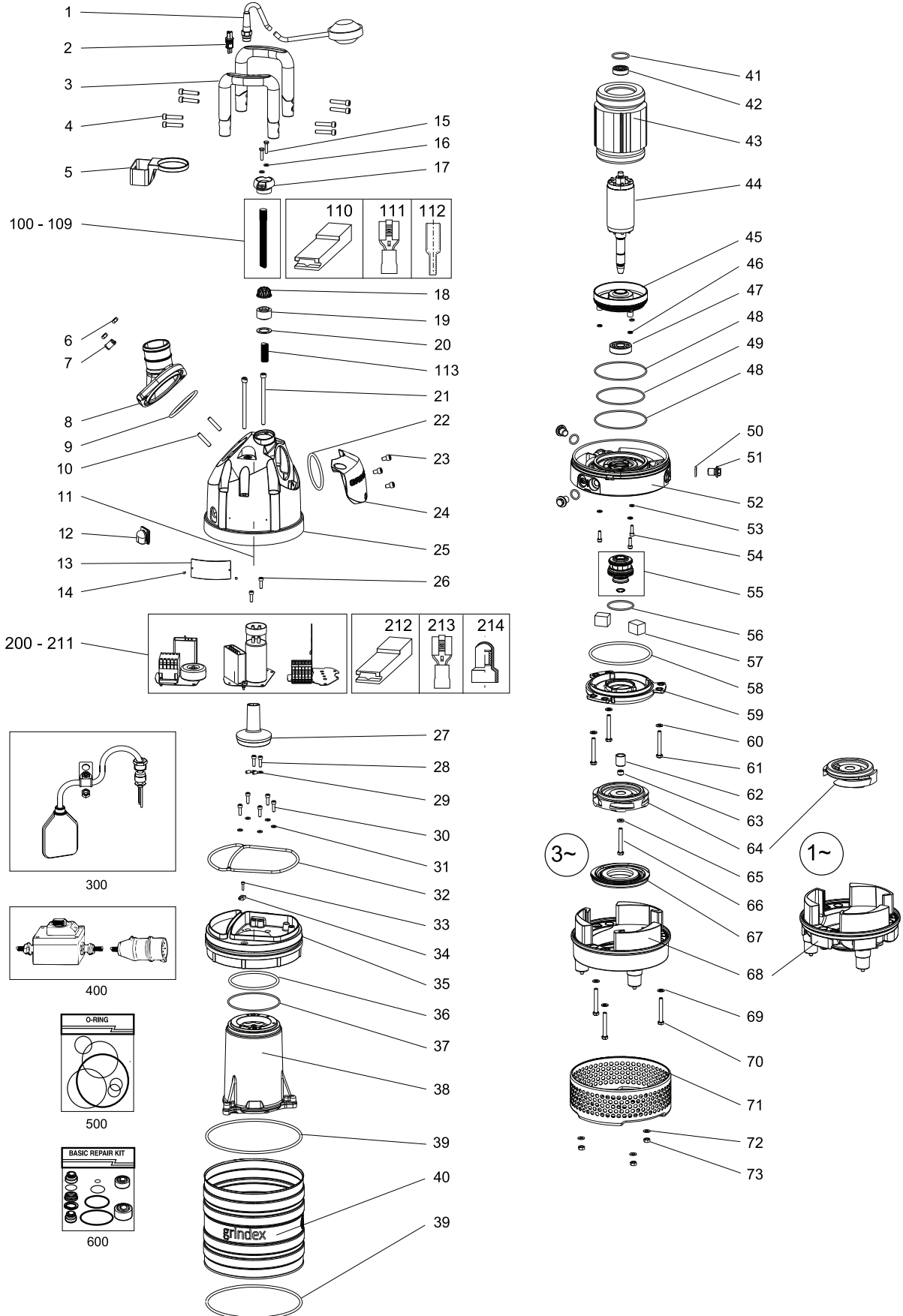


# Parts List



www.grindex.com

## MINETTE — 8102.171





# Parts List

MINETTE — 8102.171

## Overview

---

### Table of Contents

This publication contains the following topics:

### Topic

Preface .....	4
Practical Information .....	5
Data Plate Interpretation.....	6
Order parts .....	7
Spare Parts .....	8

---

# Preface

## Purpose

The purpose of this manual is to give the reader information about available spare parts and accessories for the product.

---

## Recipient

The manual is principally intended for Grindex

- customers
  - service personnel *and*
  - sales personnel.
- 

## Contact

Please contact Grindex if any information in this publication is

- incorrect
  - missing
  - difficult to find *or*
  - irrelevant.
- 

## Reference

More information about the product is available in the following documents:

- Installation, Operation and Maintenance
  - Accessories. Please see Grindex Accessories list.
-

# Practical Information

## Overview

### Table of Contents

---

This chapter contains the following topics:

<b>Topic</b>	
Data Plate Interpretation .....	6
Data Plate .....	6
Order parts .....	7

---

# Data Plate Interpretation

## Introduction

The Grindex product is always provided with data plates:

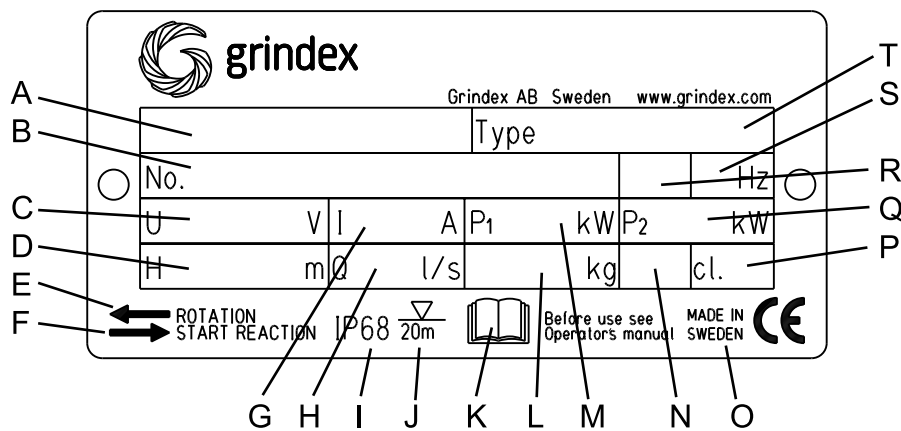
- The general data plate is used on all products.
- The approval plate is added to all explosion proof products.

## Data Plate

The product may only be operated within the parameters stated on the data plate.

## Illustration

This is an illustration of a general data plate.



## Field description

This table shows the fields on the general data plate, and which information each field contains.

Field	Description	Field	Description
A	Pump model	K	Read the Installation, Operation and Maintenance Manual
B	Serial number	L	Product weight
C	Rated voltage	M	Maximum Power consumption
D	Maximum height	N	Locked rotor code letter
E	Direction of Impeller rotation	O	Country of origin
F	Direction of starting jerk	P	Thermal class
G	Rated current	Q	Rated shaft power
H	Maximum capacity	R	Phase; type of current
I	Degree of protection	S	Frequency
J	Maximum submersion depth	T	Pump type number

## Order parts

---

### **Order**

When ordering spare parts, state product number and serial number of the product, spare part number and quantity.

---

### **Requirements**

Genuine Grindex parts must always be used for repairs if the product is to fulfill requirements and obtain official approval.

---

## Spare Parts

Pos. No	Part. No	Denomination	Qty/Version	
			171	
1	50 937 01	Level regulator unit CSA & UL (OPTIONAL) 60HZ 1-PHASE	1	
1	50 937 00	Level regulator unit EU 50HZ (OPTIONAL) 1-PHASE	1	
2	50 936 00	Plug contact (OPTIONAL)	1	
3	50 873 00	Handle compl.	2	
4	50 021 29	Hex.socket hd screw M8X40-A4-70	8	
5	50 848 00	Holder (OPTIONAL)	1	
6	50 021 37	Hexagon nut M8-A4-70	2	
7	410 077	Cable clamp (OPTIONAL)	1	
8	410 028	Coupling part DN 75 INNER THREAD G3	1	
8	51 148 00	Discharge connection DN 75 HOSE 3"	1	
8	51 148 01	Discharge connection DN 75 ISO-G 3A OUTER	1	
8	51 148 02	Discharge connection DN 75 NPT 3"-8 OUTER	1	
9	410 015	O-ring 79,2X5,7-NBR	1	
10	410 078	Stud M8X30-A2-70	2	
11	50 892 00	Connection plate	1	Contactactor unit 3-phase. 50Hz: 380-415V Y, 500V Y, 550V Y, 220V - 230V D. 60Hz: 230V Y//, 380V Y, 575-600V Y, 460-480V YSER, 220-230V D.
11	50 892 04	Connection plate	1	Capacitor unit 1-phase. 50Hz: 110V, 220-240V. 60Hz: 115V, 220-240V.
11	50 899 00	Connection plate	1	Terminal board 3-phase. Y, D, YSER, Y//.
11	50 918 00	Connection plate	1	Screened 3x1,5mm <sup>2</sup> FGB, Subcab S3x2,5mm <sup>2</sup> +3x2,5mm <sup>2</sup> /3+4x1,5 mm <sup>2</sup> .
11	50 981 00	Connection plate	1	Terminal board 1-phase.
11	50 982 00	Connection plate	1	Contactactor unit 3-phase. 50Hz: 220-230V D, 380-415V Y, 500V Y, 550V Y. 60Hz: 200V Y, 220V D, 380VY, 575V - 600V Y.
11	50 982 01	Connection plate	1	Contactactor unit 3-phase. 60Hz: 230VY//, 460-480V YSER.
11	50 984 00	Connection plate	1	Terminal board 3-phase Y, D.

Pos. No	Part. No	Denomination	Qty/Version
11	50 985 00	Connection plate	1
		Terminal board 3-phase YSER, Y//.	
11	50 892 02	Connection plate	1
		Contacteur unit 3-phase. 50Hz (with float switch): 220V - 230V D, 380-415V Y.	
12	50 836 00	Air release valve	1
13	50 907 01	Data plate	1
14	410 000	Drive screw 4X5-A2-70	4
15	410 001	Hexagon head screw M6X25-A4-70	2
16	410 013	Plain washer A4-A 170	2
17	50 932 00	Entrance flange (10)-20MM	1
17	50 932 01	Entrance flange (22)-26MM	1
18	50 926 00	Cable clip (10)-12MM	1
18	50 926 01	Cable clip (12)-14MM	1
18	50 926 02	Cable clip (14)-16MM	1
18	50 926 04	Cable clip (18)-20MM	1
18	50 926 05	Cable clip (18)-22MM	1
18	50 926 06	Cable clip (22)-26MM	1
18	50 926 07	Cable clip (22)-26MM	1
19	410 043	Seal sleeve (10)-12MM	1
19	410 044	Seal sleeve (12)-14MM	1
19	410 045	Seal sleeve (14)-16MM	1
19	410 047	Seal sleeve (18)-20MM	1
19	410 048	Seal sleeve (20)-22MM	1
19	410 049	Seal sleeve (22)-24MM	1
19	410 050	Seal sleeve (24)-26MM	1
20	50 127 00	Plain washer (24)-26MM	1
20	50 127 04	Plain washer (10)-22MM	1
21	50 021 21	Hex.socket hd screw M8X120-A2-70	2
22	132 355	O-ring 89,1X5,7 NBR	1
23	410 010	Hex.socket hd screw M8X12-A2-70	3
24	50 871 00	Cover	1
25	51 167 00	Main cover	1
25	51 167 01	Main cover	1
		Prepared for float switch.	
26	50 020 04	Hex.socket hd screw M6X20-A4-70	2
27	50 835 00	Protective casing	1
28	50 020 04	Hex.socket hd screw M6X20-A4-70	1

Pos. No	Part. No	Denomination	Qty/Version	
			171	
29	410 032	Cable lug INSUL.UL/CSA 1.04-2.6MM2	2	
30	50 020 04	Hex.socket hd screw M6X20-A4-70	5	
31	410 013	Plain washer A4-A 170	5	
32	50 938 01	Gasket	1	
33	410 008	Hex.socket hd screw M4X16-A2-70	1	
34	410 390	Thermal detectors	1	
35	51 151 00	Cover	1	
36	410 016	O-ring 109,1X5,7 NBR	1	
37	50 037 01	O-ring 119,5X3,0 NBR	1	
38	51 147 00	Stator housing	1	
39	132 422	O-ring 219.3X5.7 NBR	2	
40	50 874 00	Cooling jacket	1	
41	50 037 63	O-ring 36,2X3,0 FPM	1	
42	50 287 03	Ball bearing 6301-2Z/C3WT 12X37X12	1	
43	50 912 00	Stator 13-10-2b	1	3-phase 50Hz: 220-230V D, 380-415V Y.
43	50 912 01	Stator 13-10-2b	1	3-phase 50Hz: 500-550V Y. 60Hz: 575-600V Y.
43	50 912 02	Stator 13-10-2b	1	3-phase 60Hz: 230V Y//, 460-480V YSER.
43	50 912 03	Stator 13-10-2b	1	3-phase 60Hz: 220V D, 380V Y.
43	50 913 00	Stator 13-10-2b	1	1-phase 50Hz: 220-240V.
43	50 913 02	Stator 13-10-2b	1	1-phase 60Hz: 220-240V.
44	50 914 00	Shaft unit	1	
45	50 988 06	Bearing housing	1	
46	133 064	O-ring 19.2X3.0 NBR	3	
47	50 287 04	Ball bearing 6304-2Z/C3WT 20X52X15	1	
48	50 037 01	O-ring 119,5X3,0 NBR	2	
49	50 037 04	O-ring 109,5X3,0 NBR	1	
50	50 983 00	Gasket NBR	3	
51	133 063	Inspection screw	3	
52	50 990 00	Intermediate piece	1	
53	410 013	Plain washer A4-A 170	3	
54	50 020 04	Hex.socket hd screw M6X20-A4-70	3	
55	50 901 00	Mechanical seal	1	

Pos. No	Part. No	Denomination	Qty/Version	
			171	
56	410 083	O-ring 57,5X3,0 FPM	1	
57	410 040	Pressure equalizer	2	
58	130 943	O-ring 139.3X5.7 NBR	1	
59	50 921 00	Seal housing cov.coa	1	
60	50 021 38	Plain washer A4-A 170	3	
61	410 006	Hexagon head screw M8X60-A4-80	3	
62	50 930 00	Clamping sleeve	1	
63	50 931 00	Adjustment screw	1	
64	50 939 00	Impeller	1	3-phase 50 Hz.
64	50 939 01	Impeller	1	3-phase 60 Hz.
64	51 015 50	Impeller	1	1-phase 50 Hz.
64	51 015 52	Impeller	1	1-phase 60 Hz.
65	410 014	Plain washer A2-170HV M8	1	
66	410 006	Hexagon head screw M8X60-A4-80	1	
67	50 941 00	Wear ring	1	
68	50 940 00	Diffuser part	1	3-phase
68	50 940 01	Diffuser part	1	3-phase prepared for zinc anode.
68	51 020 00	Diffuser part	1	1-phase
68	51 020 01	Diffuser part	1	1-phase prepared for zinc anode.
69	50 021 38	Plain washer A4-A 170	3	
70	410 006	Hexagon head screw M8X60-A4-80	3	
71	50 922 00	Strainer compl.	1	
73	50 021 37	Hexagon nut M8-A4-70	3	
100	410 039	Cable with plug SUBCAB 3G1,5MM2	1	(ALSO ORDER POS. NO. 110, 111, 113.)
101	410 058	Motor cable SCREENED 3X1,5MM2 FGB	*	13.5-14.9 mm. (ALSO ORDER POS. NO. 11, 112, 113.)
102	410 061	Motor cable SUBCAB S3X2,5+..MM2	*	18,7-20 mm. (ALSO ORDER POS. NO. 12, 113.)
103	131 042	Motor cable SUBCAB 3G1,5MM2	*	10-11 mm. (ALSO ORDER POS. NO. 110, 111, 113.)
104	131 040	Motor cable SUBCAB 4G1,5MM2	*	10.5-11.5 mm. (ALSO ORDER POS. NO. 113.)
105	131 039	Motor cable SUBCAB 4G2,5MM2	*	12.5-13.5 mm. (ALSO ORDER POS. NO. 113.)
106	410 062	Motor cable SUBCAB 4G1,5+2X1,5MM2	*	15-16 mm. (ALSO ORDER POS. NO. 113.)

Pos. No	Part. No	Denomination	Qty/Version	
			171	
107	410 064	Motor cable SUBCAB 14AWG/3	13.2-14.2 mm. (ALSO ORDER POS. NO. 110, 111, 113.)	*
108	410 065	Motor cable SUBCAB 14AWG/4	14.2-15.2 mm. (ALSO ORDER POS. NO. 113.)	*
109	410 066	Motor cable SUBCAB 14AWG/7	18-20 mm. (ALSO ORDER POS. NO. 113.)	*
110	50 040 05	Insulating sleeve 0.5-6MM2		2
111	50 040 04	Flat pin sleeve 1-2.5MM2		2
111	50 040 09	Flat pin sleeve 0.75-1.5MM2		2
112	410 055	Shrink hose		*
113	132 354	Insulating hose (18-22MM)		*
113	410 056	Insulating hose (10-16MM)		*
200	50 986 00	Con.term.board unit	3-phase Y, D, YSER, Y//. (ALSO ORDER POS. NO. 11, 214.)	1
201	50 986 01	Con.term.board unit	1-phase. (ALSO ORDER POS. NO. 11.)	1
202	50 891 05	Starter unit	Contacteur unit 3-phase, 50Hz: 380-415V Y. 60Hz: 380V Y. (ALSO ORDER POS. NO. 11, 212, 213, 214.)	1
202.1	410 008	Hex.socket hd screw M4X16-A2-70		4
202.2	410 012	Lock nut		4
202.3	410 109	Contacteur		1
202.4	50 883 00	Mounting plate		1
202.5	50 509 00	Cable set		1
202.6	50 905 01	Motor protector	SMART	1
203	50 891 06	Starter unit	Contacteur unit 3-phase, 60 Hz: 460-480V YSER. (ALSO ORDER POS. NO. 11, 212, 213, 214.)	1
203.1	410 008	Hex.socket hd screw M4X16-A2-70		4
203.2	410 009	Hex.socket hd screw M6X30-A2-70		1
203.3	410 012	Lock nut		4
203.4	50 020 07	Lock nut M6-A4-70		1
203.5	50 040 05	Insulating sleeve 0.5-6MM2		1
203.6	50 040 09	Flat pin sleeve 0.75-1.5MM2		1
203.7	410 108	Contacteur		1
203.8	50 935 00	Transformer		1
203.9	50 883 00	Mounting plate		1
203.10	50 509 00	Cable set		1

Pos. No	Part. No	Denomination		Qty/Version	
				171	
203.11	50 905 04	Motor protector	SMART	1	
204	50 891 07	Starter unit	Contacteur unit 3-phase, 50Hz: 500V Y. (ALSO ORDER POS. NO. 11, 212, 213, 214.)	1	
204.1	410 008	Hex.socket hd screw M4X16-A2-70		4	
204.2	410 012	Lock nut		4	
204.3	410 110	Contacteur		1	
204.4	50 883 00	Mounting plate		1	
204.5	50 509 00	Cable set		1	
204.6	50 905 02	Motor protector	SMART	1	
205	50 891 08	Starter unit	Contacteur unit 3-phase, 50Hz: 500-550V Y. (ALSO ORDER POS. NO. 11, 212, 213, 214.)	1	
205.1	410 008	Hex.socket hd screw M4X16-A2-70		4	
205.2	410 009	Hex.socket hd screw M6X30-A2-70		1	
205.3	410 012	Lock nut		4	
205.4	50 020 07	Lock nut M6-A4-70		1	
205.5	50 040 05	Insulating sleeve 0.5-6MM2		1	
205.6	50 040 09	Flat pin sleeve 0.75-1.5MM2		1	
205.7	410 108	Contacteur		1	
205.8	50 935 02	Transformer		1	
205.9	50 883 00	Mounting plate		1	
205.10	50 509 00	Cable set		1	
205.11	50 905 02	Motor protector	SMART	1	
206	50 891 09	Starter unit	Contacteur unit 3-phase, 60Hz: 575-600V Y. (ALSO ORDER POS. NO. 11, 212, 213, 214.)	1	
206.1	410 008	Hex.socket hd screw M4X16-A2-70		4	
206.2	410 009	Hex.socket hd screw M6X30-A2-70		1	
206.3	410 012	Lock nut		4	
206.4	50 020 07	Lock nut M6-A4-70		1	
206.5	50 040 05	Insulating sleeve 0.5-6MM2		1	
206.6	50 040 09	Flat pin sleeve 0.75-1.5MM2		1	
206.7	410 108	Contacteur		1	
206.8	50 935 01	Transformer		1	
206.9	50 883 00	Mounting plate		1	
206.10	50 509 00	Cable set		1	
206.11	50 905 05	Motor protector	SMART	1	

Pos. No	Part. No	Denomination	Qty/Version	
			171	
207	50 891 10	Starter unit	1	1
		Contactor unit 3-phase, 60Hz: 380V Y. (ALSO ORDER POS. NO. 11, 212, 213, 214.)		
207.1	410 008	Hex.socket hd screw M4X16-A2-70	4	
207.2	410 012	Lock nut	4	
207.3	410 109	Contactor	1	
207.4	50 883 00	Mounting plate	1	
207.5	50 509 00	Cable set	1	
207.6	50 905 04	Motor protector	1	SMART
208	50 891 11	Starter unit	1	1
		Contactor unit 3-phase, 50Hz: 220-230V D. (ALSO ORDER POS. NO. 12, 212, 213, 214.)		
208.1	410 008	Hex.socket hd screw M4X16-A2-70	4	
208.2	410 012	Lock nut	4	
208.3	410 108	Contactor	1	
208.4	50 883 00	Mounting plate	1	
208.5	50 509 00	Cable set	1	
208.6	50 905 00	Motor protector	1	
209	50 891 12	Starter unit	1	1
		Contactor unit 3-phase, 60Hz: 230V Y//. (ALSO ORDER POS. NO. 11, 212, 213, 214.)		
209.1	410 008	Hex.socket hd screw M4X16-A2-70	4	
209.2	410 012	Lock nut	4	
209.3	410 111	Contactor	1	
209.4	50 883 00	Mounting plate	1	
209.5	50 509 00	Cable set	1	
209.6	50 905 03	Motor protector	1	SMART
210	50 891 15	Starter unit	1	1
		Capacitor unit 1-phase, 50Hz: 220-240V. (ALSO ORDER POS. NO. 11, 212, 213 (both), 214.)		
210.1	410 008	Hex.socket hd screw M4X16-A2-70	2	
210.3	410 012	Lock nut	2	
210.4	50 021 36	Lock nut M8-A4-70	2	
210.5	410 089	Capacitor	1	
210.6	410 140	Capacitor	1	
210.7	50 883 00	Mounting plate	1	
210.8	50 906 02	Start relay	1	SNT
210.9	51 004 00	Cable set	1	

Pos. No	Part. No	Denomination	Qty/Version		
			171		
211	50 891 16	Starter unit	Capacitor unit 1-phase, 60Hz: 220-240V. (ALSO ORDER POS. NO. 11, 212, 213 (both), 214.)	1	
211.1	410 008	Hex.socket hd screw M4X16-A2-70		2	
211.3	410 012	Lock nut		2	
211.4	50 021 36	Lock nut M8-A4-70		2	
211.5	410 089	Capacitor		1	
211.6	410 141	Capacitor		1	
211.7	50 883 00	Mounting plate		1	
211.8	50 906 02	Start relay	SNT	1	
211.9	51 004 00	Cable set		1	
212	50 040 05	Insulating sleeve 0.5-6MM2		5	
213	50 040 07	Flat pin sleeve 2.5-6MM2		1	
213	50 040 09	Flat pin sleeve 0.75-1.5MM2		4	
214	410 034	Closed end splice 3,0-6,0(AWG 12-10)		5	
300	51 155 00	Float switch kit 3-PHASE, MAX 400V		1	
300.1	140 049	Hex.socket hd screw		1	
300.2	50 021 36	Lock nut M8-A4-70		1	
300.3	410 034	Closed end splice 3,0-6,0(AWG 12-10)		1	
300.4	410 370	Plain washer		1	
300.5	-	Mounting instruction		1	
300.6	410 077	Cable clamp		1	
300.7	51 278 00	Bending protection		1	
300.8	410 367	Gland screw		1	
300.9	50 176 00	Level switch 3-PHASE, MAX 400V		1	
300.10	-	Fixing plate		1	
400	410 035	Plug contact 250V 1PH 10A T12 SEV1011	L+N+PE	1	
400	410 038	Plug contact 250V 1PH 15A NEMA 6-15		1	
400	410 042	Plug contact 230V 1PH 16A CEE 3P		1	
400	50 100 00	Plug contact 380-415V 3PH 16A CEE 5P		1	
400	50 102 00	Phase shifter 220-575V 0-16A		1	
500	51 164 00	O-ring kit	Contains all pos. numbered O-rings.	1	

Pos. No	Part. No	Denomination	Qty/Version	
			171	
600	51 162 00	Basic repair kit	1	
600.1	50 287 03	Ball bearing 6301-2Z/C3WT 12X37X12	1	
600.2	50 287 04	Ball bearing 6304-2Z/C3WT 20X52X15	1	
600.3	410 040	Pressure equalizer	2	
600.4	50 901 00	Mechanical seal	1	
600.5	51 164 00	O-ring kit	1	Contains all pos. numbered O-rings.
700	51 077 00	Anode UNIT	1	
800	51 143 00	Low-suction cuff	1	

\* piece goods





Grindex AB • Box 7025 • SE-174 07 Sundbyberg • Sweden • Tel +46 8 606 66 00 • Fax +46 8 745 53 28 • [marketing@grindex.com](mailto:marketing@grindex.com)

*© Grindex AB. The original instruction is in English. All non-English instructions are translations of the original instruction.*