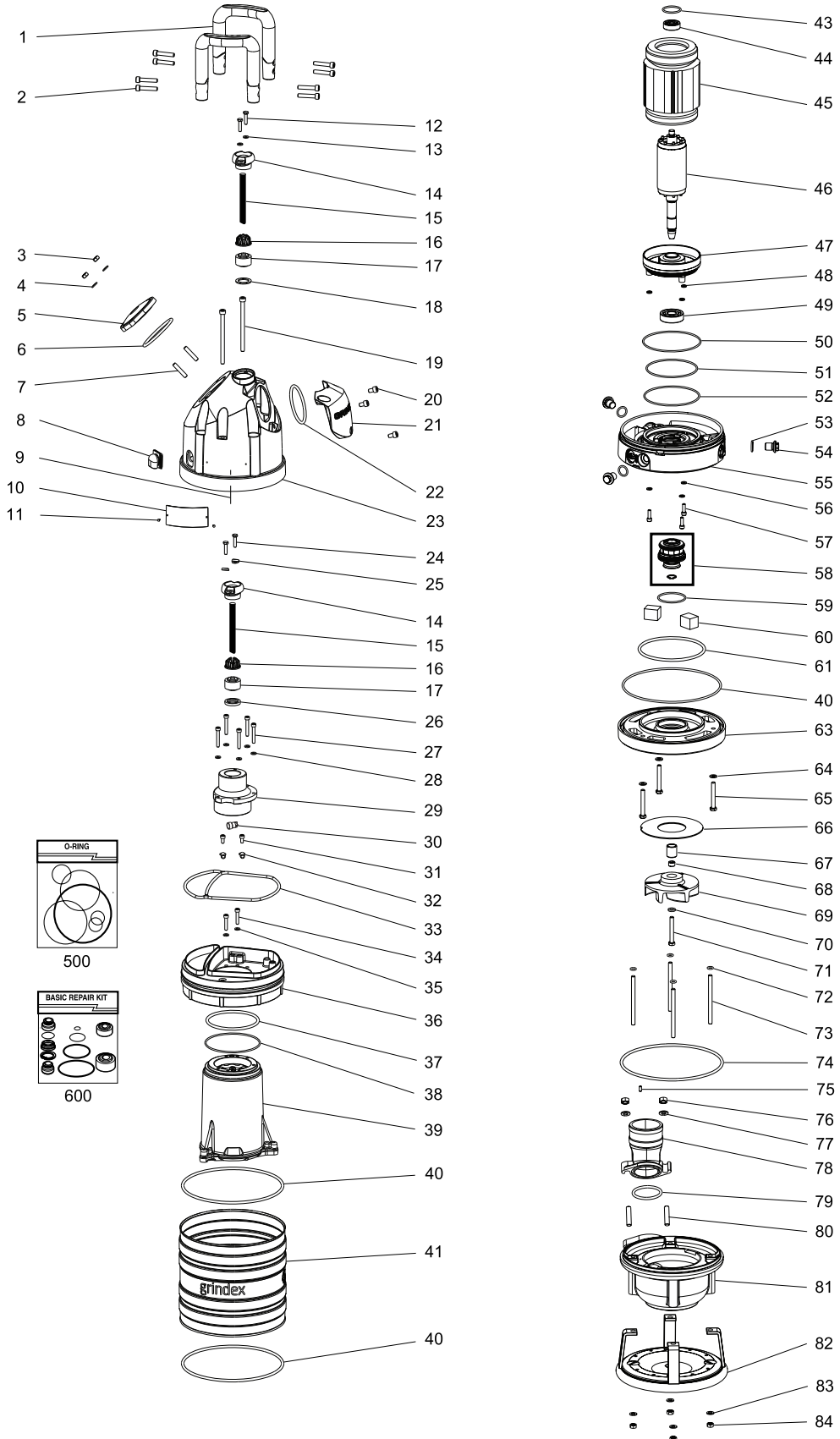


# Parts List



www.grindex.com

## SALVADOR MSHA — 8109.581





# Parts List

## SALVADOR MSHA — 8109.581

### Overview

---

#### Table of Contents

This publication contains the following topics:

#### Topic

Preface .....	4
Practical Information .....	5
Data Plate Interpretation.....	6
Order parts .....	7
Spare Parts .....	8

---

# Preface

## Purpose

The purpose of this manual is to give the reader information about available spare parts and accessories for the product.

---

## Recipient

The manual is principally intended for Grindex

- customers
  - service personnel *and*
  - sales personnel.
- 

## Contact

Please contact Grindex if any information in this publication is

- incorrect
  - missing
  - difficult to find *or*
  - irrelevant.
- 

## Reference

More information about the product is available in the following documents:

- Installation, Operation and Maintenance
  - Accessories. Please see Grindex Accessories list.
-

# Practical Information

## Overview

### Table of Contents

---

This chapter contains the following topics:

#### Topic

Data Plate Interpretation .....	6
Data Plate .....	6
Order parts .....	7

---

# Data Plate Interpretation

## Introduction

The Grindex product is always provided with data plates:

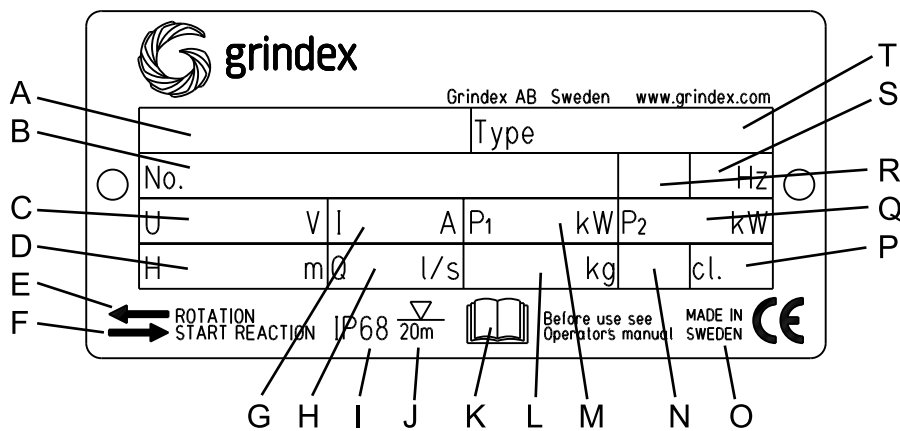
- The general data plate is used on all products.
- The approval plate is added to all explosion proof products.

## Data Plate

The product may only be operated within the parameters stated on the data plate.

## Illustration

This is an illustration of a general data plate.



## Field description

This table shows the fields on the general data plate, and which information each field contains.

Field	Description	Field	Description
A	Pump model	K	Read the Installation, Operation and Maintenance Manual
B	Serial number	L	Product weight
C	Rated voltage	M	Maximum Power consumption
D	Maximum height	N	Locked rotor code letter
E	Direction of Impeller rotation	O	Country of origin
F	Direction of starting jerk	P	Thermal class
G	Rated current	Q	Rated shaft power
H	Maximum capacity	R	Phase; type of current
I	Degree of protection	S	Frequency
J	Maximum submersion depth	T	Pump type number

## Order parts

---

### **Order**

When ordering spare parts, state product number and serial number of the product, spare part number and quantity.

---

### **Requirements**

Genuine Grindex parts must always be used for repairs if the product is to fulfill requirements and obtain official approval.

---

## Spare Parts

Pos. No	Part. No	Denomination	Qty/Version	
			581	
1	50 873 00	Handle compl.	2	
2	50 021 29	Hex.socket hd screw M8X40-A4-70	8	
3	50 021 37	Hexagon nut M8-A4-70	2	
4	50 021 38	Plain washer A4-A 140	2	
5	50 884 00	Cover	1	
6	410 015	O-ring 79,2X5,7-NBR	1	
7	410 078	Stud M8X30-A2-70	2	
8	50 836 00	Air release valve	1	
9	51 187 00	Connection plate	1	3-phase. YSER, Y//.
9	51 188 00	Connection plate	1	3-phase. Y, D.
10	50 888 00	Plate-blank	1	Use 50 907 01 as spare part.
11	410 000	Drive screw 4X5-A2-70	4	
12	410 001	Hexagon head screw M6X25-A4-70	2	
13	410 172	Spring washer DIN 127-B-6-A4-70	2	
14	50 932 00	Entrance flange (10)-20MM	2	
15	410 066	Motor cable	*	Subcab 14AWG/7 2.08mm <sup>2</sup> (18-20mm).
15	410 068	Motor cable	*	Subcab 12AWG/7 3.31mm <sup>2</sup> (20-22mm).
15	410 069	Motor cable	*	Subcab 10AWG/3-2-1-GC 5.26mm <sup>2</sup> (20,30-22,30mm).
16	50 926 04	Cable clip (18)-20MM	2	
16	50 926 05	Cable clip (18)-22MM	2	
17	133 023	Seal sleeve (20)-22 MM	2	
17	50 015 09	Seal sleeve (18)-20 MM	2	
18	50 127 04	Plain washer (10)-22MM	1	
19	50 021 21	Hex.socket hd screw M8X120-A2-70	2	
20	410 010	Hex.socket hd screw M8X12-A2-70	3	
21	50 871 00	Cover	1	
22	132 355	O-ring 89,1X5,7 NBR	1	
23	51 167 00	Main cover	1	
24	410 001	Hexagon head screw M6X25-A4-70	2	
25	51 294 00	Lock washer	2	
26	51 293 00	Washer	1	

Pos. No	Part. No	Denomination	Qty/Version	
			581	
27	410 401	Hex.socket hd screw M6X40-A2-70	5	
28	410 172	Spring washer DIN 127-B-6-A4-70	5	
29	51 145 00	Connection housing	1	
30	410 034	Closed end splice 3,0-6,0(AWG 12-10)	8	
30	410 400	Butt connector (2,5-6MM2)	8	
31	410 026	Hex.socket hd screw M6X12-A4-70	2	
32	410 032	Cable lug INSUL.UL/CSA 1.04-2.6MM2	2	
32	410 177	Cable lug INSUL.UL/CSA 2.62-6.64MM2	2	
33	50 938 01	Gasket	1	
34	410 009	Hex.socket hd screw M6X30-A2-70	2	
35	410 172	Spring washer DIN 127-B-6-A4-70	2	
36	51 151 01	Cover	1	
37	410 016	O-ring 109,1X5,7 NBR	1	
38	50 037 01	O-ring 119,5X3,0 NBR	1	
39	51 147 01	Stator housing	1	
40	132 422	O-ring 219.3X5.7 NBR	3	
41	50 874 00	Cooling jacket	1	
43	50 037 63	O-ring 36,2X3,0 FPM	1	
44	50 287 03	Ball bearing 6301-2Z/C3WT 12X37X12	1	
45	50 912 01	Stator 13-10-2b	1	
45	50 912 02	Stator 13-10-2b	1	
46	50 914 00	Shaft unit 100MM	1	
47	50 988 01	Bearing housing	1	
48	50 983 00	Gasket NBR	3	
49	50 287 04	Ball bearing 6304-2Z/C3WT 20X52X15	1	
50	50 519 00	Spring	1	
51	50 037 04	O-ring 109,5X3,0 NBR	1	
53	133 064	O-ring 19.2X3.0 NBR	3	
54	133 063	Inspection screw	3	
55	50 990 00	Intermediate piece	1	
56	410 172	Spring washer DIN 127-B-6-A4-70	3	

Pos. No	Part. No	Denomination	Qty/Version	
			581	
57	50 020 04	Hex.socket hd screw M6X20-A4-70	3	
58	50 901 00	Mechanical seal	1	
59	410 083	O-ring 57,5X3,0 FPM	1	
60	410 040	Pressure equalizer	2	
61	130 943	O-ring 139.3X5.7 NBR	1	
63	51 146 00	Seal housing cover	1	
64	50 021 38	Plain washer A4-A 140	3	
65	410 006	Hexagon head screw M8X60-A4-80	3	
66	51 091 00	Guide plate	1	
67	50 930 00	Clamping sleeve	1	
68	50 931 00	Adjustment screw	1	
69	50 837 01	Impeller	1	
70	410 014	Plain washer A2-170HV M8	1	
71	410 006	Hexagon head screw M8X60-A4-80	1	
72	50 037 18	O-ring 8X3 NBR	4	
73	50 021 26	Stud M8X105-A2-70	4	
74	410 161	O-ring 215*4,0 NBR	1	
75	410 167	Parallel pin CP-H8-5X12-2343	1	
76	50 022 22	Hexagon nut M10-A4-70	2	
77	50 022 26	Plain washer A4-A 140	2	
78	130 890	Discharge connection DN 75 ISO-G 3A OUTER	1	
78	140 152	Discharge connection DN 75 HOSE 3"	1	
78	50 348 00	Discharge connection DN 75 NPT 3"-8 OUTER	1	
79	140 366	O-ring 56,52X5,34	1	
80	410 169	Stud 10X35-A2-70	2	
81	50 065 01	Pump housing	1	
82	132 740	Stand	1	
83	50 021 38	Plain washer A4-A 140	4	
84	50 021 37	Hexagon nut M8-A4-70	4	
500	51 165 00	O-ring kit	1	Contains all pos. numbered O-rings.
600	51 179 00	Basic repair kit	1	
600.1	50 287 03	Ball bearing 6301-2Z/C3WT 12X37X12	1	
600.2	50 287 04	Ball bearing 6304-2Z/C3WT 20X52X15	1	

Pos. No	Part. No	Denomination	Qty/Version	
			581	
600.3	410 040	Pressure equalizer	2	
600.4	50 519 00	Spring	1	
600.5	50 901 00	Mechanical seal	1	
600.6	51 165 00	O-ring kit	1	
		Contains all pos. numbered O-rings.		

\* piece goods



Grindex AB • Box 7025 • SE-174 07 Sundbyberg • Sweden • Tel +46 8 606 66 00 • Fax +46 8 745 53 28 • [marketing@grindex.com](mailto:marketing@grindex.com)

*© Grindex AB. The original instruction is in English. All non-English instructions are translations of the original instruction.*